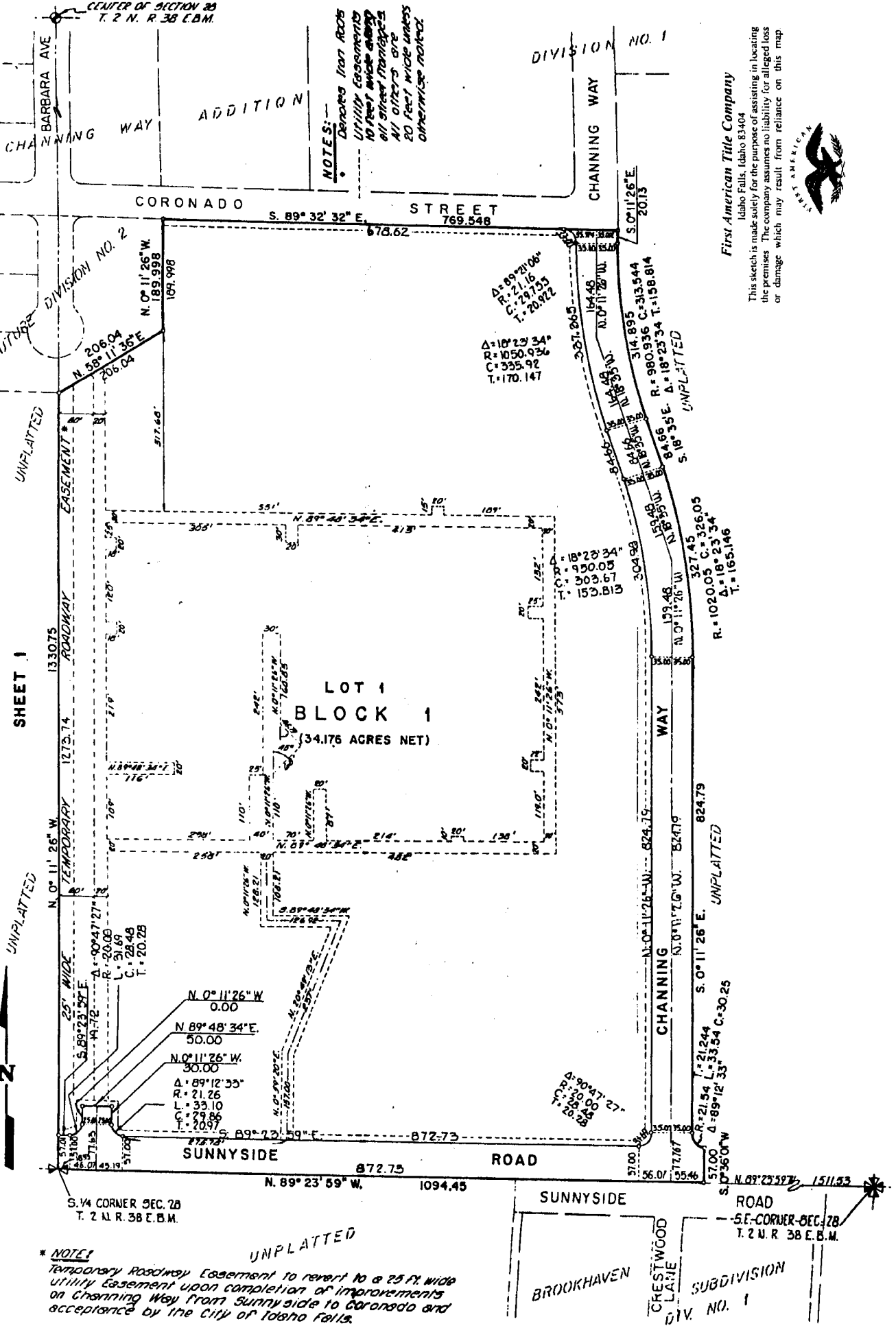


IDAHO FALLS REGIONAL MEDICAL CENTER

AN ADDITION TO THE CITY OF IDAHO FALLS, BONNEVILLE COUNTY, IDAHO
A PORTION OF THE S.E. 1/4 OF SECTION 28 T. 2 N. R. 38 E. B. 1 M.



*** NOTE**
Temporary Roadway Easement to revert to a 25 ft. wide utility easement upon completion of improvements on Channing Way from Sunnyside to Coronado and acceptance by the City of Idaho Falls.

First American Title Company
Idaho Falls, Idaho 83404

This sketch is made solely for the purpose of assisting in locating the premises. The company assumes no liability for alleged loss or damage which may result from reliance on this map.

