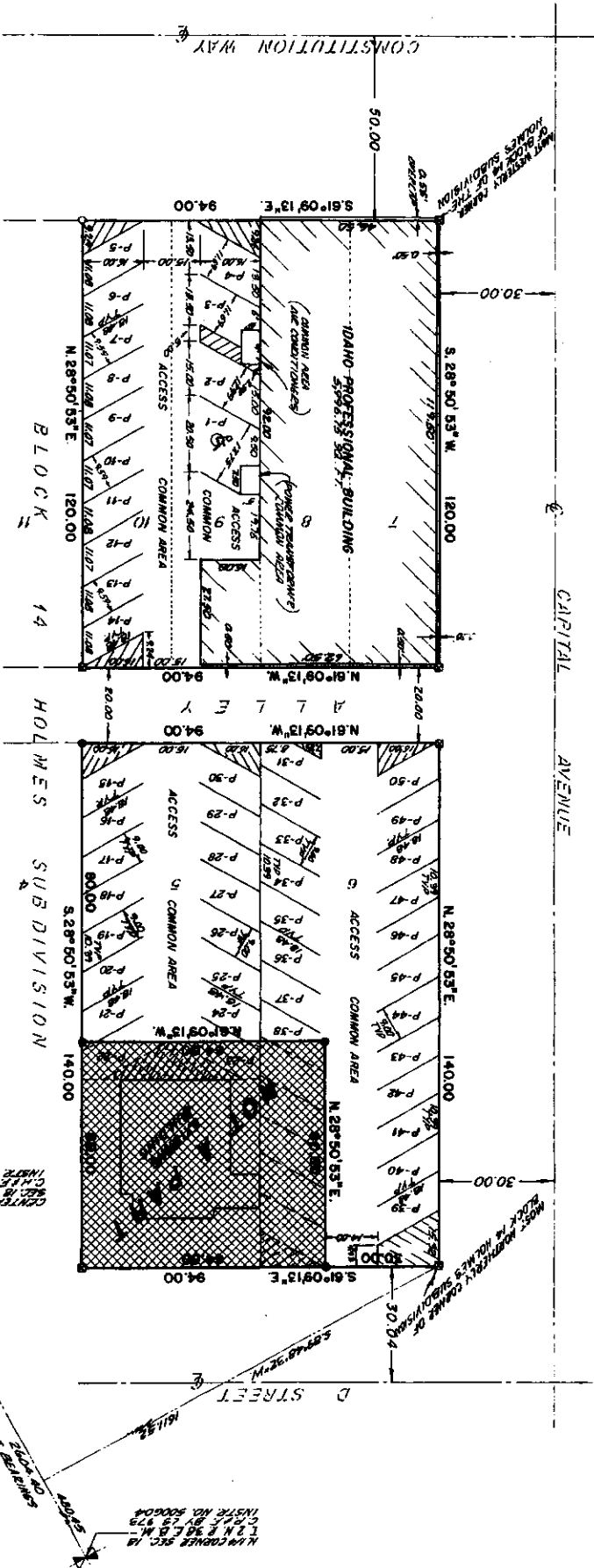


THIRD AMENDED PLAT OF THE IDAHO PROFESSIONAL BUILDING CONDOMINIUM

PURSUANT TO IDAHO CODE, TITLE 55, CHAPTER 18
CITY OF IDAHO FALLS, BONNEVILLE COUNTY, IDAHO
BEING A RE-PLAT OF THE ACCESS, PARKING AND COMMON AREAS OUTSIDE OF THE BUILDING
IN LOTS 5, 6, 7, 8, 9, AND 10, BLOCK 14 OF THE HOLMES SUBDIVISION
LYING IN THE NW 1/4 OF SECTION 18, T2N, R3E, B.M.



NOTE

All PL through P48 are Parking Data
provided for parking areas as indicated.

First American Title Company
Idaho Falls, ID 83404
While this is a photographic
reproduction of the recorded
plan, the company assumes
no liability for variations,
if any, with a re-survey.

LEGEND & NOTES

- 1/2" = 1' Final Plat and other maps approved I.L.R.O.
 - 1/2" = 1' Final Plat and other maps approved I.L.R.O.
 - Contained in final plat
- The owner, owner and other parties have been placed for record here.
And the Department approved and required.