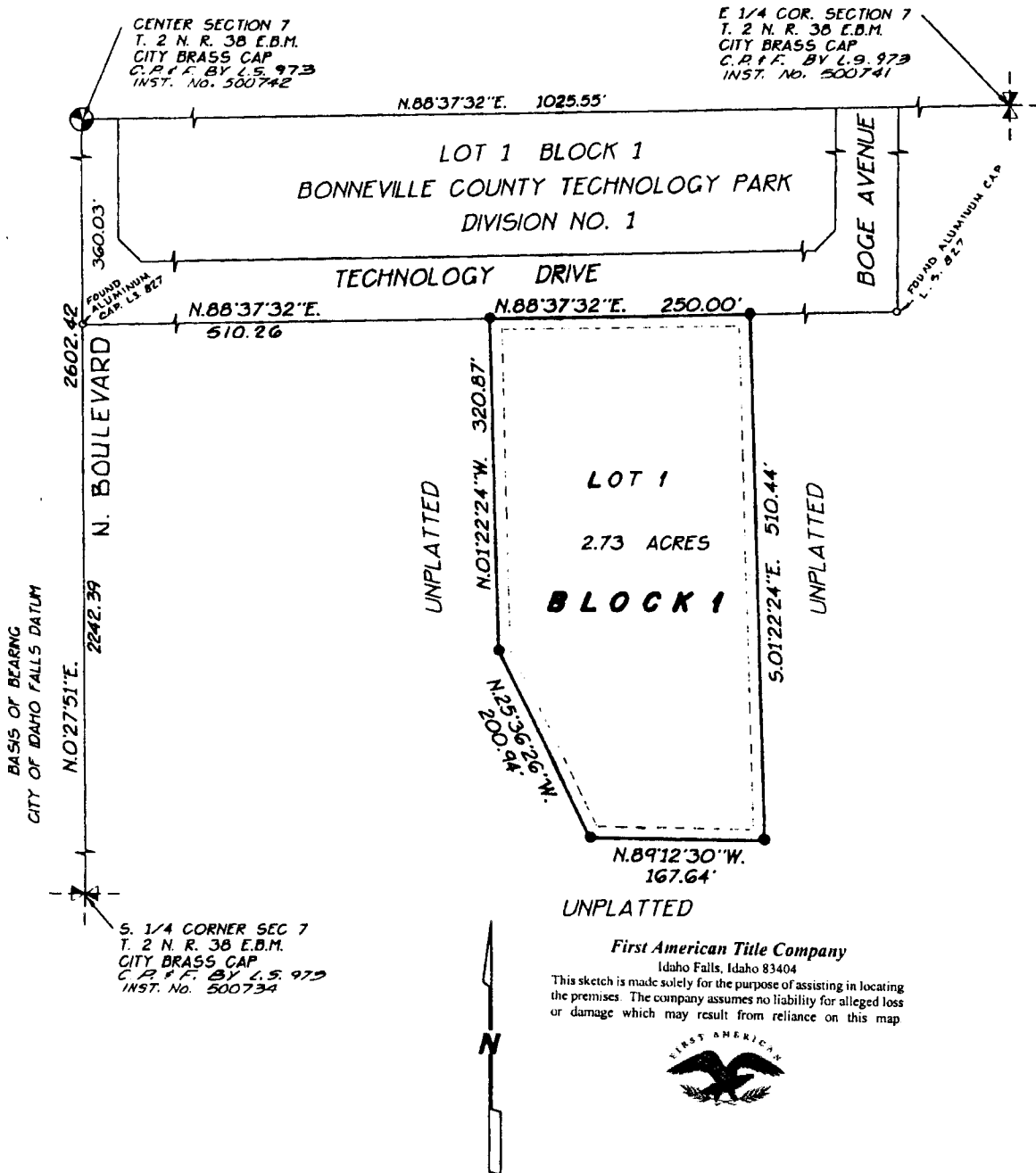


INTERMOUNTAIN BUSINESS AND TECHNOLOGY PARK DIVISION NO. 1

AN ADDITION TO THE CITY OF IDAHO FALLS,
BONNEVILLE COUNTY, IDAHO

BEING PART OF THE N.W. 1/4 S.E. 1/4 SECTION 7, T. 2 N., R. 38 E.B.M.



First American Title Company
Idaho Falls, Idaho 83404
This sketch is made solely for the purpose of assisting in locating the premises. The company assumes no liability for alleged loss or damage which may result from reliance on this map.



LEGEND & NOTES

- 5/8" x 30" Steel Re-bar set with plastic cap stamped L.S. 827
- A Ten foot wide Utility Easement is hereby granted along all road frontages within each lot. All other easements are 7 feet wide unless otherwise noted.