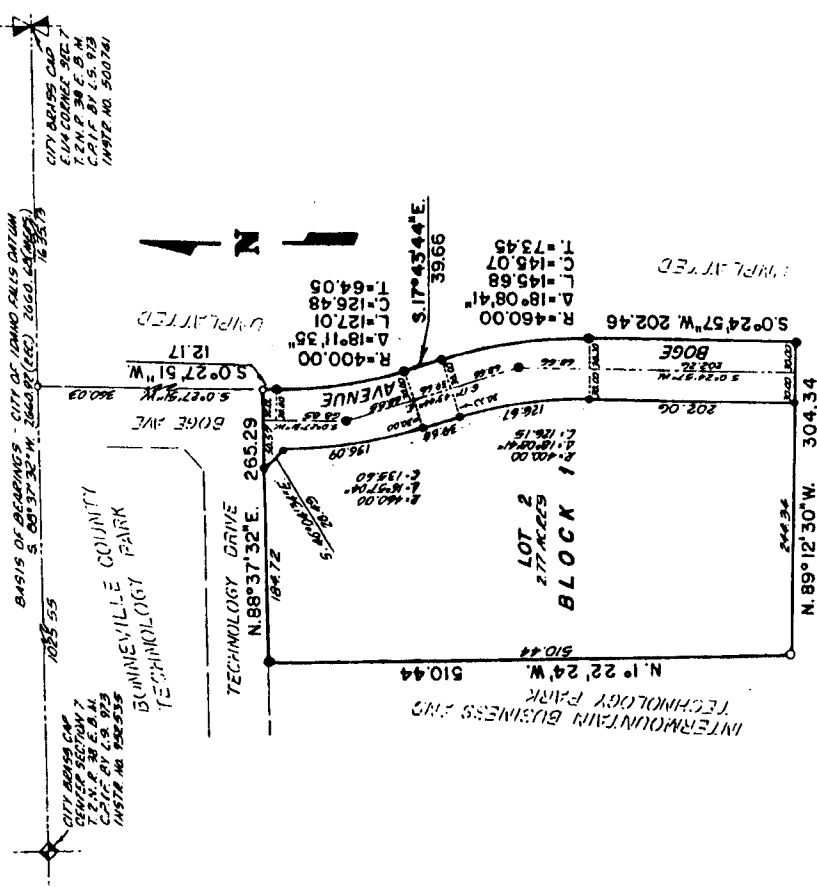


# INTERMOUNTAIN BUSINESS AND TECHNOLOGY PARK DIVISION NO. 2

AN ADDITION TO THE CITY OF IDAHO FALLS, BONNEVILLE COUNTY, IDAHO  
BEING PART OF THE N.W. 1/4 S.E. 1/4 SECTION 7, T. 2 N., R. 38 E., B.M.



**First American Title Company**  
Idaho Falls, Idaho 83404  
This sketch is made solely for the purpose of assisting in locating the premises. The company assumes no liability for alleged loss or damage which may result from reliance on this map.



**LEGEND & NOTES**

- 5/8" x 30" Steel Re-bar set with plastic cap stamped L.S.027
  - 5/8" Steel Re-bar found with cap stamped L.S.027
  - 1/2" x 24" Steel Re-bar set with plastic cap stamped L.S.027
  - 1/2" Steel Re-bar found with cap stamped L.S.027
- All Utility Enclosures are Ten Feet wide unless otherwise noted.

UNPLATTED