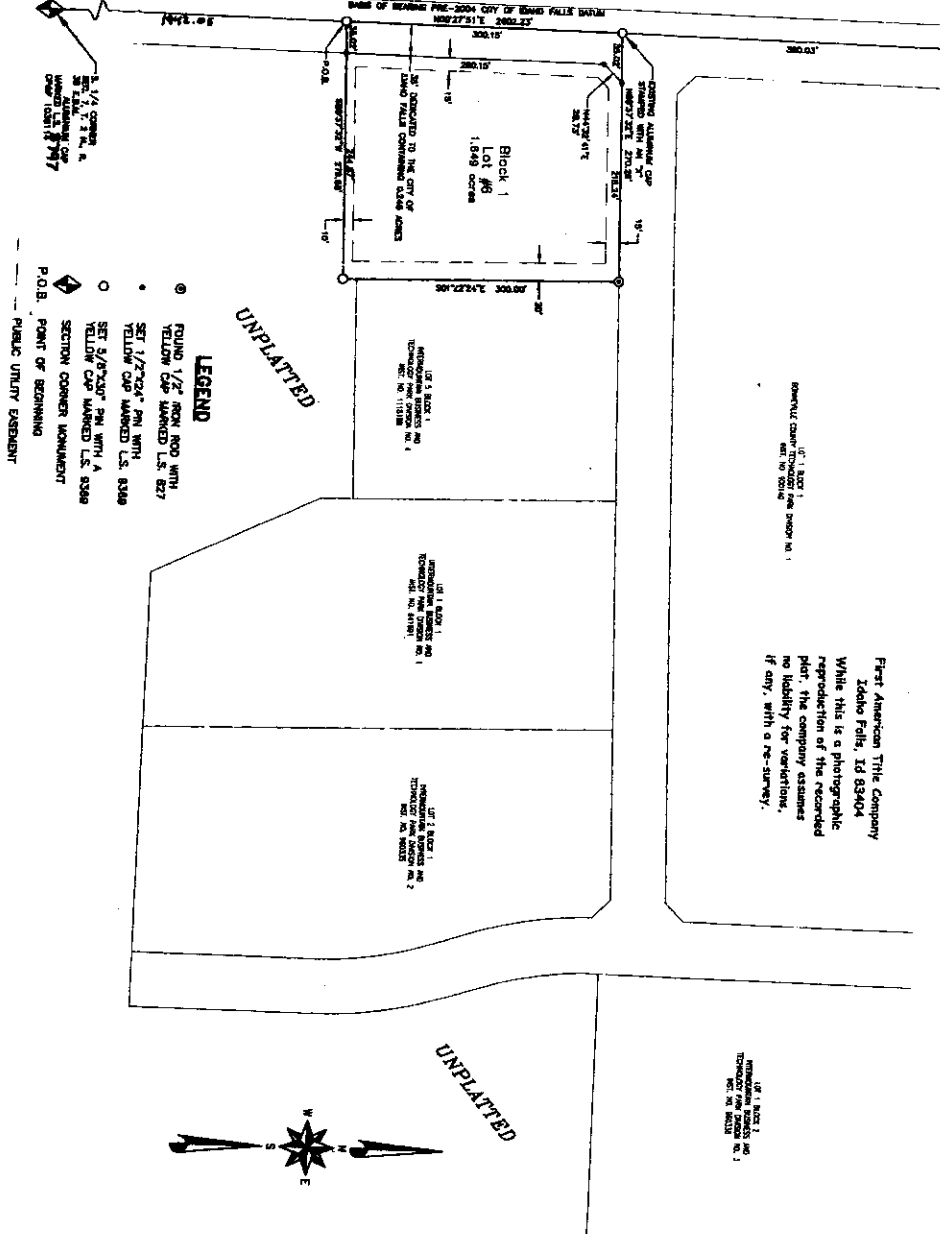


# INTERMOUNTAIN BUSINESS AND TECHNOLOGY PARK DIVISION NO. 5

AN ADDITION TO THE CITY OF IDAHO FALLS, BONNEVILLE COUNTY, IDAHO  
PART OF THE NORTHWEST QUARTER OF THE SOUTHEAST QUARTER OF SECTION 7,  
TOWNSHIP 2 NORTH, RANGE 38 EAST OF THE BOISE MERIDIAN, BONNEVILLE COUNTY, IDAHO

First American Title Company  
Idaho Falls, ID 83404  
While this is a photographic  
reproduction of the recorded  
plat, the company assumes  
no liability for variations,  
if any, with a re-survey.



- LEGEND**
- ROUND 1/2" IRON ROD WITH YELLOW CAP MARKED U.S. 827
  - SET 1/2"x24" PIN WITH YELLOW CAP MARKED U.S. 8348
  - SET 5/8"x30" PIN WITH A YELLOW CAP MARKED U.S. 8388
  - ◊ SECTION CORNER MONUMENT
  - ◊ P.O.B. POINT OF BEGINNING
  - PUBLIC UTILITY EASEMENT