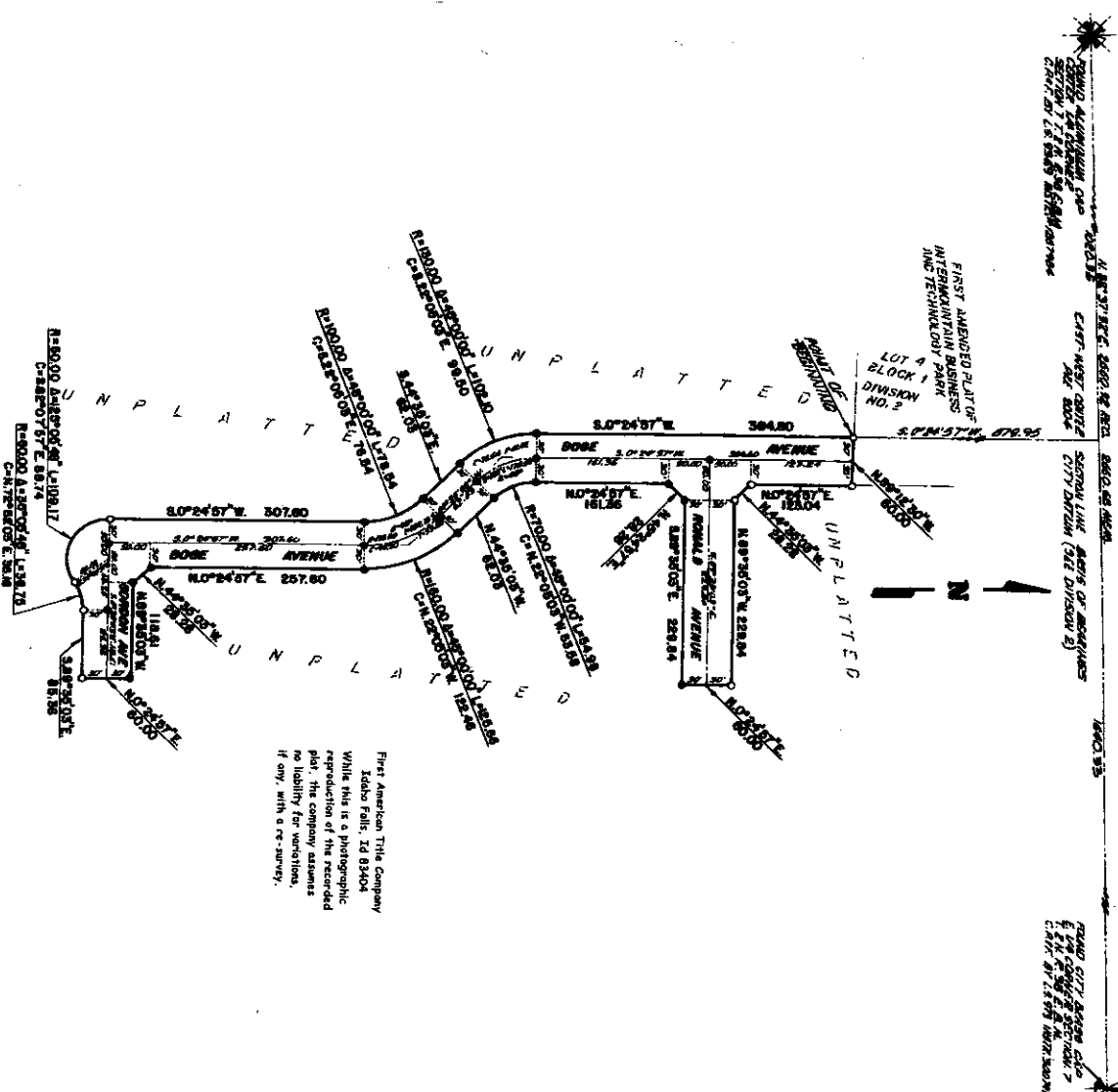


INTERMOUNTAIN BUSINESS AND TECHNOLOGY PARK DIVISION NO. 6

AN ADDITION TO THE CITY OF IDAHO FALLS, BONNEVILLE COUNTY, IDAHO BEING PART OF THE NW 1/4 SE 1/4 SECTION 7 T 2 N. R. 38 E. B.M.

LEGEND & NOTES

- 1/4" = 100' Scale used for all measurements except 1:5000
- 1/4" = 500' Scale used for all measurements except 1:5000



First American Title Company
 Idaho Falls, ID 83404
 While this is a photographic
 reproduction of the recorded
 plat, the company assumes
 no liability for variations,
 if any, with a re-survey.