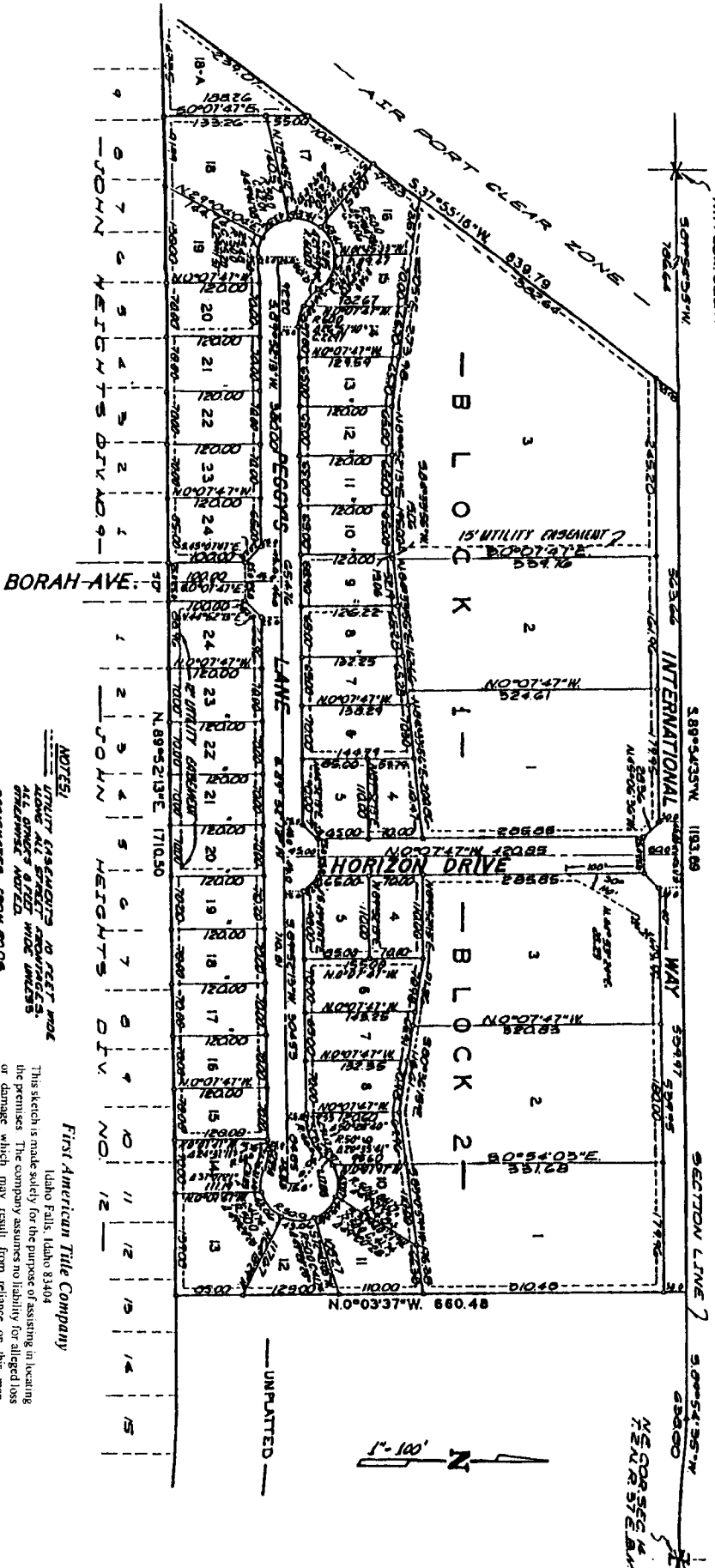


FIRST AMENDED PLAT OF INTERNATIONAL PLAZA

AN ADDITION TO THE CITY OF DAHO FALLS, BONNEVILLE COUNTY, IDAHO
A PORTION OF THE NORTH 1/2 OF SECTION 14, T.2N., R. 37 E.B.M.



NOTES:
 1. ALL LOTS ARE TO BE PLATTED
 2. ALL LOTS ARE TO BE PLATTED
 3. ALL LOTS ARE TO BE PLATTED
 4. ALL LOTS ARE TO BE PLATTED
 5. ALL LOTS ARE TO BE PLATTED
 6. ALL LOTS ARE TO BE PLATTED
 7. ALL LOTS ARE TO BE PLATTED
 8. ALL LOTS ARE TO BE PLATTED
 9. ALL LOTS ARE TO BE PLATTED
 10. ALL LOTS ARE TO BE PLATTED
 11. ALL LOTS ARE TO BE PLATTED
 12. ALL LOTS ARE TO BE PLATTED
 13. ALL LOTS ARE TO BE PLATTED
 14. ALL LOTS ARE TO BE PLATTED
 15. ALL LOTS ARE TO BE PLATTED
 16. ALL LOTS ARE TO BE PLATTED
 17. ALL LOTS ARE TO BE PLATTED
 18. ALL LOTS ARE TO BE PLATTED
 19. ALL LOTS ARE TO BE PLATTED
 20. ALL LOTS ARE TO BE PLATTED
 21. ALL LOTS ARE TO BE PLATTED
 22. ALL LOTS ARE TO BE PLATTED
 23. ALL LOTS ARE TO BE PLATTED
 24. ALL LOTS ARE TO BE PLATTED

This sketch is made solely for the purpose of assisting in locating the premises. The company assumes no liability for alleged loss or damage which may result from reliance on this map.

First American Title Company
 Idaho Falls, Idaho 83404

