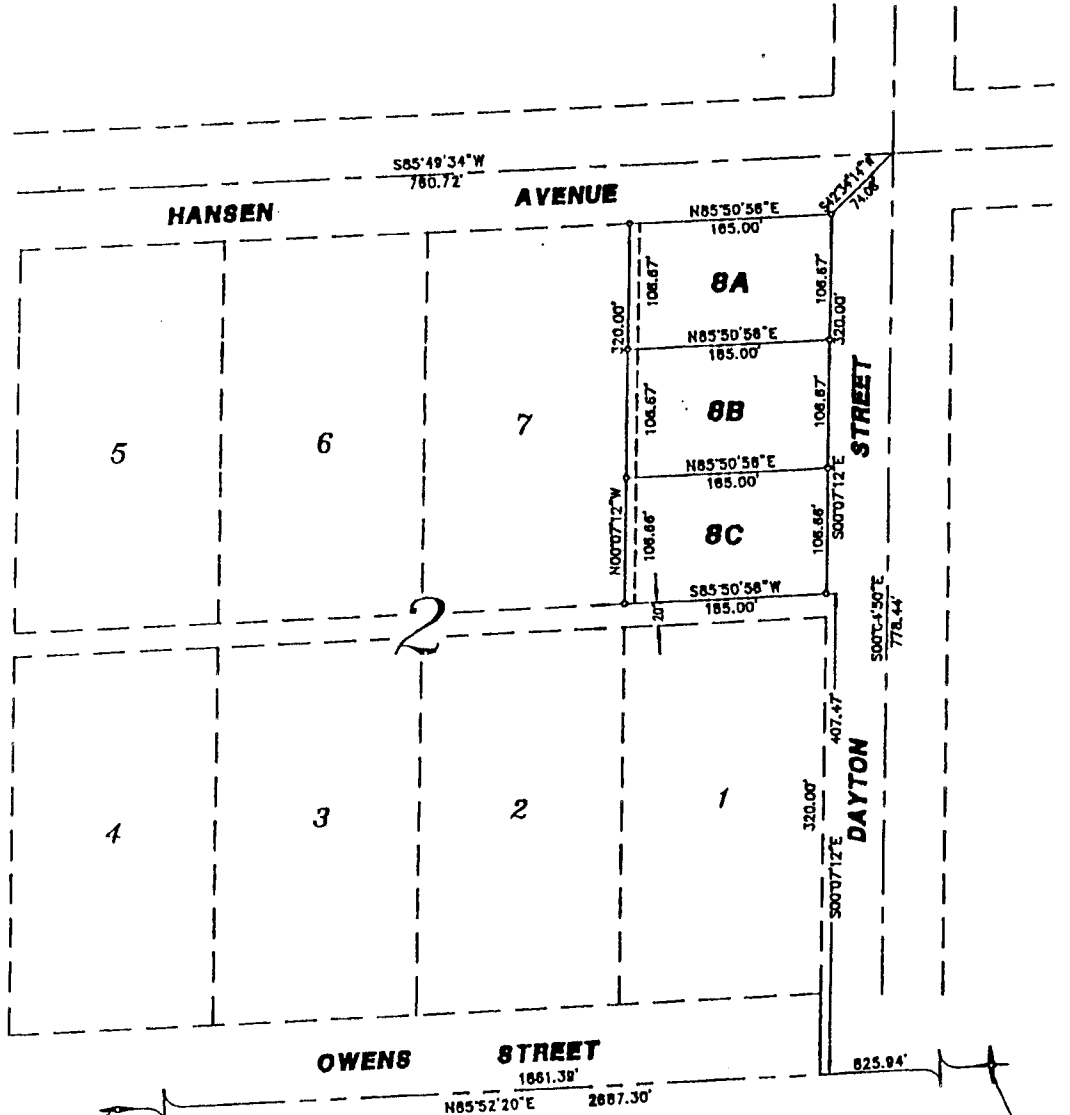


# FIRST AMENDED PLAT OF LOT 8, BLOCK 2, ORIGINAL TOWNSITE OF THE CITY OF IONA, IDAHO PART OF THE S.E. 1/4, SEC. 1, T. 2 N., R. 38 E.B.M.



## NOTES

- Indicates a 1/2" x 24" iron rod placed with a yellow plastic cap marked L.S. 722.
- - - utility easements are 8' thru each lot unless otherwise shown.
- a 10' wide utility easement is reserved along the street side of all lots.



SOUTH 1/4 COR. SEC. 1,  
T. 2 N., R. 38 E.B.M.

S.E. COR. SEC. 1,  
T. 2 N., R. 38 E.B.M.

*First American Title Company*  
Idaho Falls, Idaho 83404

This sketch is made solely for the purpose of assisting in locating the premises. The company assumes no liability for alleged loss or damage which may result from reliance on this map.

