

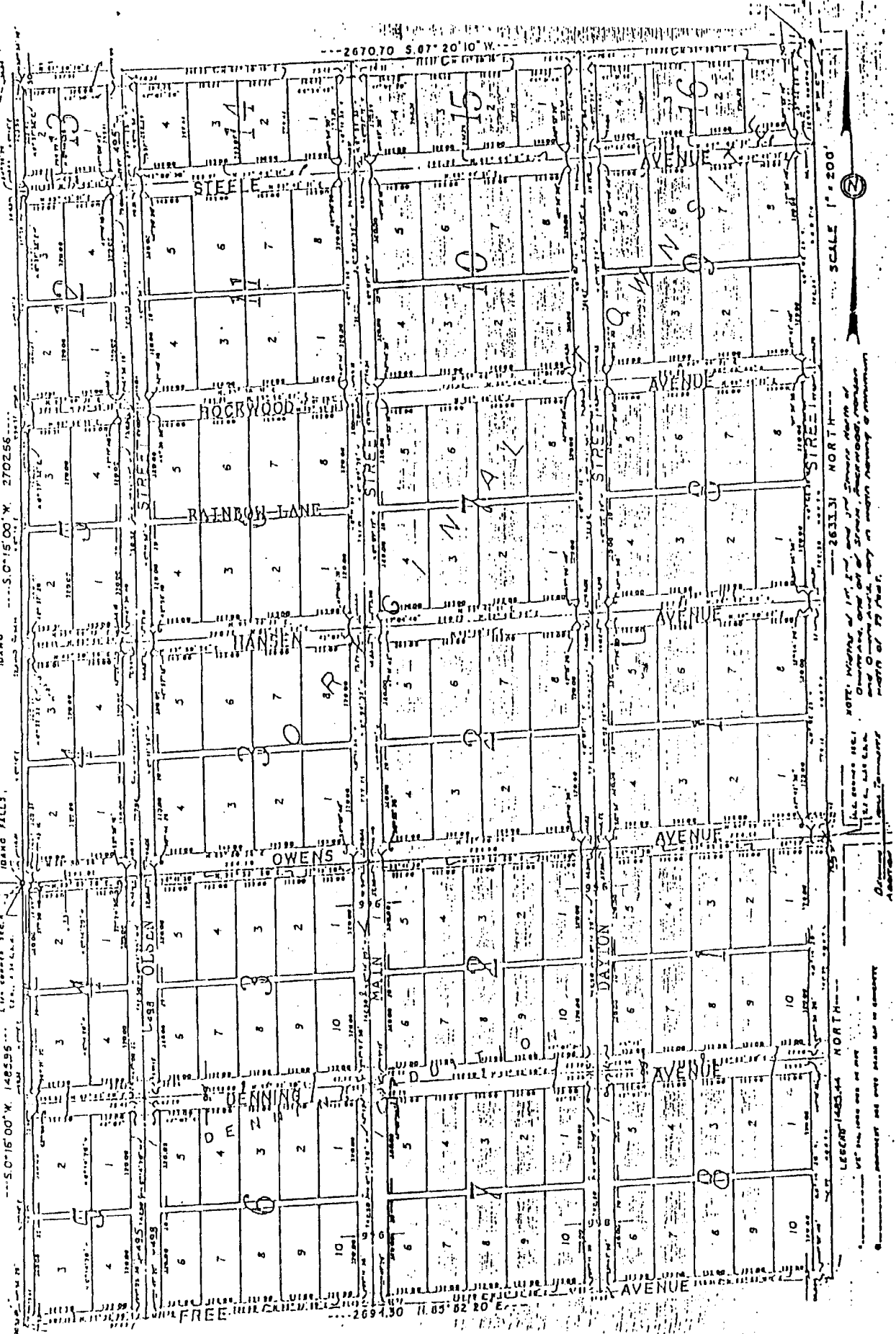
OFFICIAL PLAT
OF THE
VILLAGE OF IONA
AND
DENNING ADDITION
TO THE VILLAGE OF IONA

First American Title Company

Idaho Falls, Idaho 83404
This sketch is made solely for the purpose of assisting in locating the premises. The company assumes no liability for alleged loss or damage which may result from reliance on this map.



THE SE 1/4 OF SEC 1 AND PART OF THE NE 1/4 SEC 2,
T2N, R38E, 3M,
IDAHO
CONSULTING ENGINEER
DAVID C. SEXTON
IDAHO
S. 0° 15' 00" W. 2702.55'



SCALE 1" = 200'



2631.31 NORTH
NOTE: MAPS OF 1/4, 1/2, 3/4 AND 3/8 ACRE LOTS OF DENNING ADDITION, IONA, IDAHO, AND DENNING ADDITION, IONA, IDAHO, ARE ON FILE IN THE OFFICE OF THE COUNTY CLERK, IDAHO, IDAHO FALLS, IDAHO.

1485.95 NORTH
1485.95 NORTH

FREE 2694.30 N. 85° 52' 20" E