

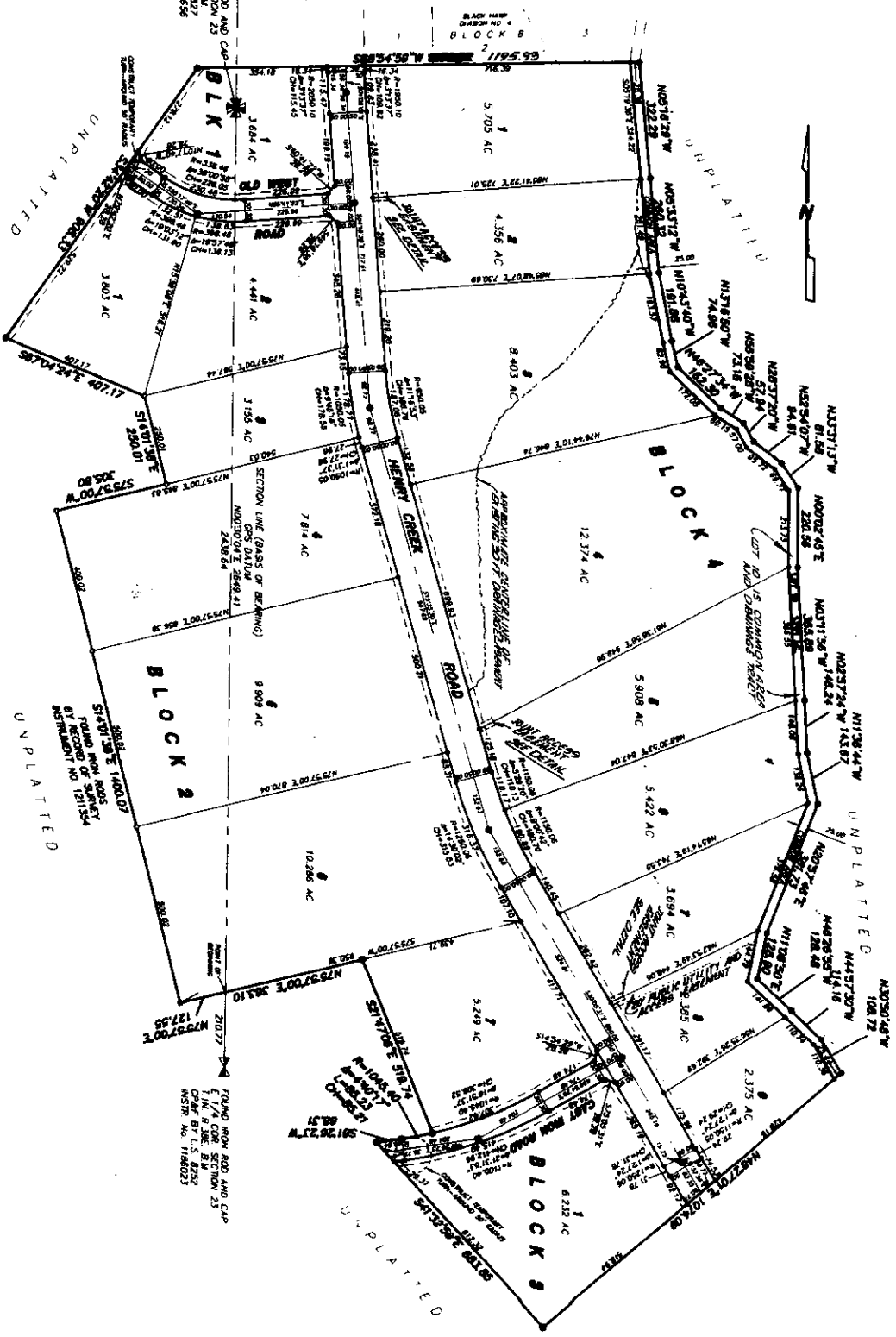
IRON RIM RANCH

DIVISION NO. 1

BONNEVILLE COUNTY, DAHO

BEING PART OF SECTIONS 14, 15 AND 16, T.1N. R.36E. B.1M.

First American Title Company
 Idaho Falls, ID 83404
 While this is a photographic
 reproduction of the recorded
 plat, the company assumes
 no liability for variations,
 if any, with a re-survey.



JOINT ACCESS EASEMENT
 DETAIL

FOUND ROW, ROD AND CAP
 1 1/4 COR. SECTION 14
 T.1N. R.36E. B.1M.
 C&M BY T.S. 827
 INSTR. NO. 500189

FOUND ROW, ROD AND CAP
 N.E. COR. SECTION 23
 T.1N. R.36E. B.1M.
 C&M BY T.S. 827
 INSTR. NO. 468858

FOUND ROW, ROD AND CAP
 1 1/4 COR. SECTION 25
 T.1N. R.36E. B.1M.
 C&M BY T.S. 827
 INSTR. NO. 118023

UNPLATTED

UNPLATTED

UNPLATTED

UNPLATTED

UNPLATTED