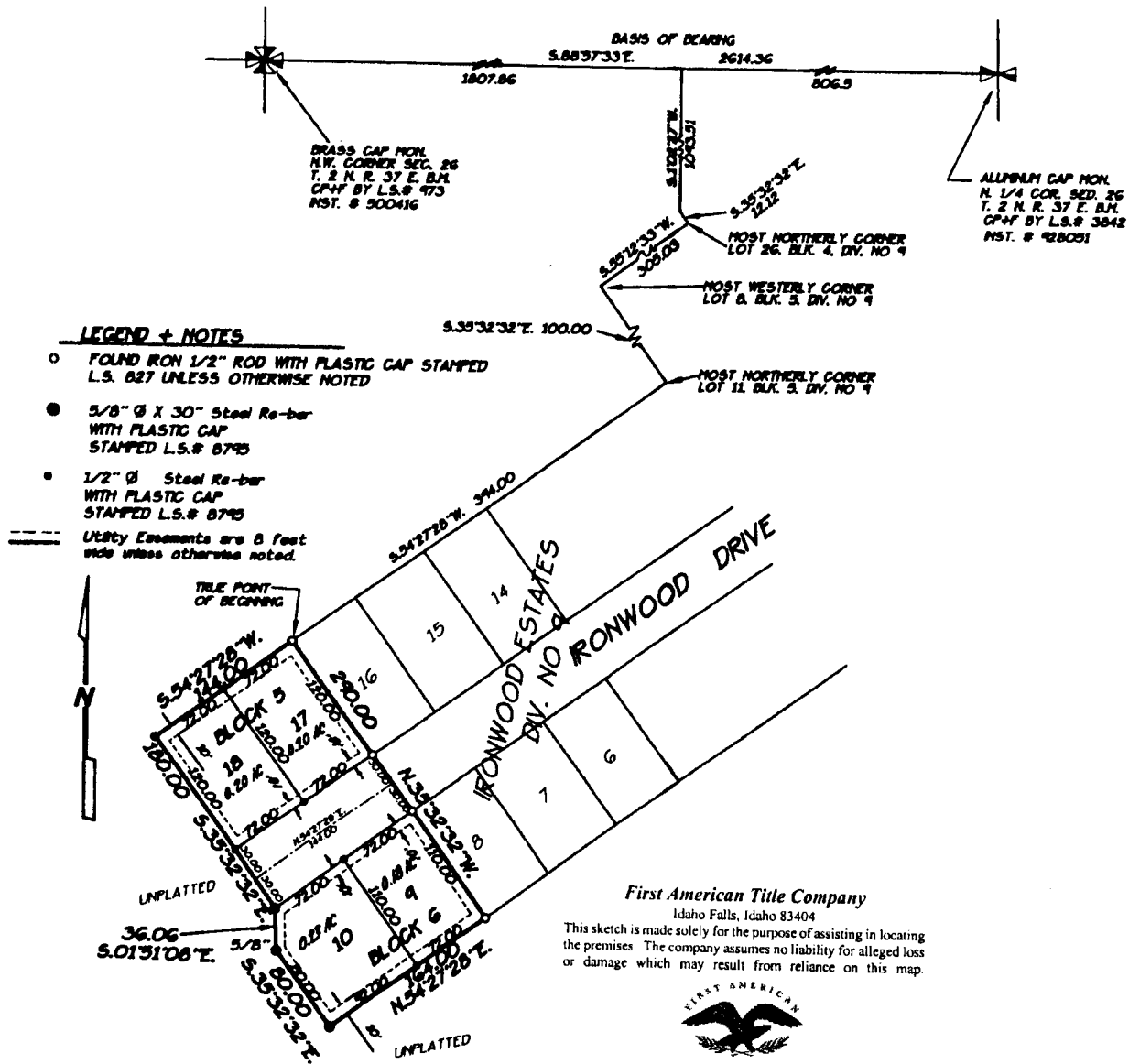


IRONWOOD ESTATES DIVISION No. 11

**AN ADDITION TO THE CITY OF IDAHO FALLS, BONNEVILLE COUNTY, IDAHO
BEING PART OF THE N.W.1/4 OF SECTION 26, T.2N., R.37 E., B.M.**



LEGEND + NOTES

- FOUND RON 1/2" ROD WITH PLASTIC CAP STAMPED L.S. 827 UNLESS OTHERWISE NOTED
- 5/8" Ø X 30" Steel Re-bar WITH PLASTIC CAP STAMPED L.S.# 8745
- 1/2" Ø Steel Re-bar WITH PLASTIC CAP STAMPED L.S.# 8745
- Utility Easements are 8 feet wide unless otherwise noted.

First American Title Company
Idaho Falls, Idaho 83404

This sketch is made solely for the purpose of assisting in locating the premises. The company assumes no liability for alleged loss or damage which may result from reliance on this map.

