

IRONWOOD ESTATES

DIVISION NO. 3

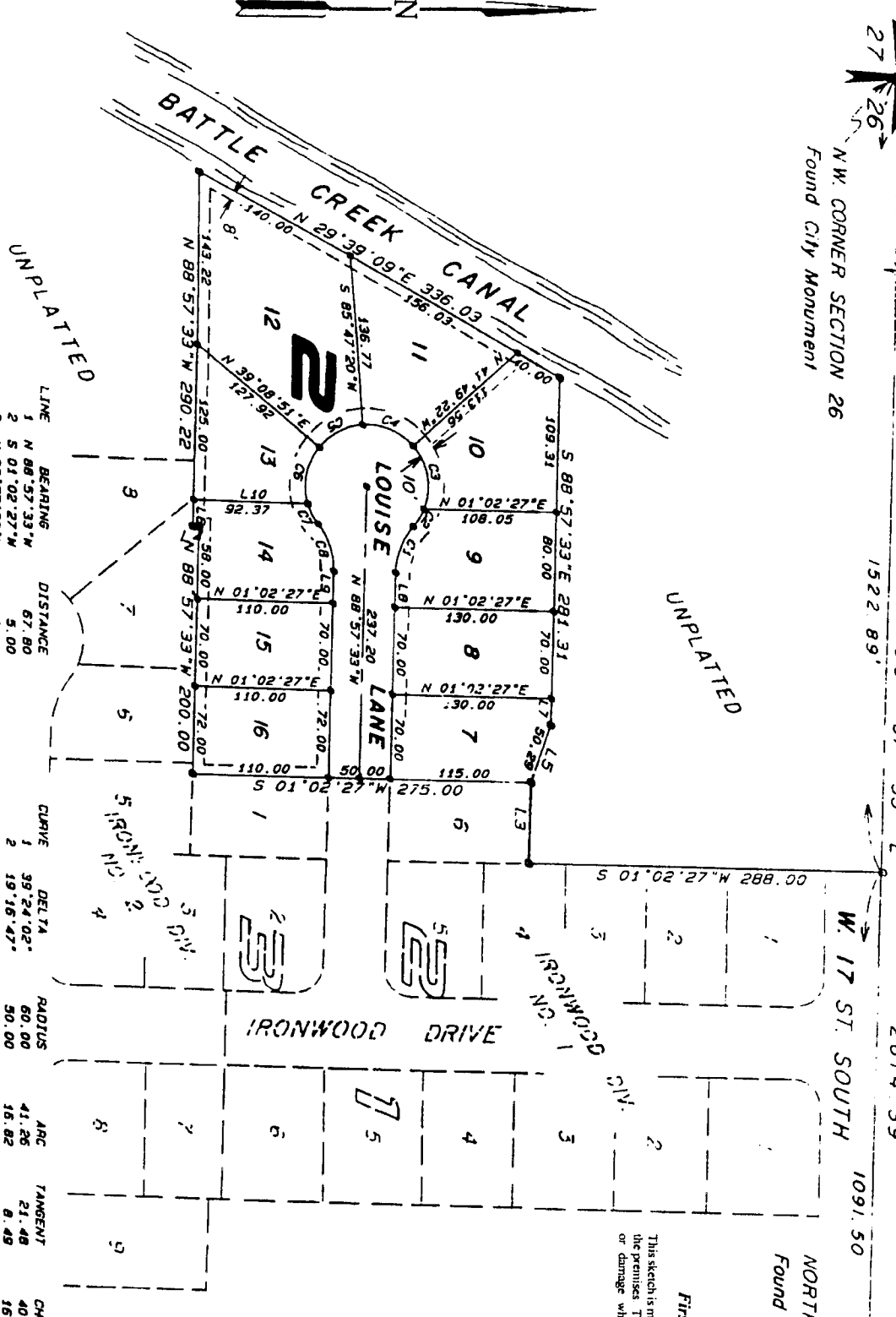
IN ADDITION TO THE CITY OF IDAHO FALLS, BONNEVILLE COUNTY IDAHO
 A PORTION OF THE N.W. 1/4 OF SECTION 26, TOWNSHIP 2 NORTH, RANGE 37 EAST B.M.



N.W. CORNER SECTION 26
 Found City Monument



NORTH 1/4 CORNER SECTION 26
 Found City Monument



LINE	BEARING	DISTANCE	CURVE	DELTA	RADIUS	ARC	TANGENT	CHORD	CHORD BNG
1	N 88° 57' 33" W	67.80	1	39° 24' 02"	60.00	41.26	21.48	40.45	N 69° 15' 32" W
2	S 01° 02' 27" W	5.00	2	19° 16' 47"	50.00	18.82	8.49	16.75	N 59° 11' 55" W
3	N 88° 57' 33" W	67.80	3	62° 59' 04"	50.00	54.96	30.63	52.24	S 79° 40' 10" W
4	S 01° 02' 27" W	5.00	4	52° 23' 18"	50.00	45.72	24.60	44.14	S 81° 58' 59" W
5	S 71° 36' 18" E	50.29	5	46° 36' 29"	50.00	40.70	21.55	39.59	S 27° 31' 55" E
6	N 88° 57' 33" W	22.00	6	55° 48' 17"	50.00	48.70	26.48	46.80	S 78° 45' 18" E
7	S 88° 57' 33" E	22.00	7	21° 42' 09"	50.00	18.94	9.58	18.83	N 62° 29' 30" E
8	N 88° 57' 33" W	27.98	8	59° 24' 02"	60.00	41.26	21.48	40.45	N 71° 20' 26" E
9	S 88° 57' 33" E	25.98							
10	N 01° 02' 27" E	82.37							

First American Title Company
 Idaho Falls, Idaho 83404
 This sketch is made solely for the purpose of assisting in locating the premises. The company assumes no liability for alleged loss or damage which may result from reliance on this map.

