

# IRONWOOD ESTATES

## DIVISION NO. 4

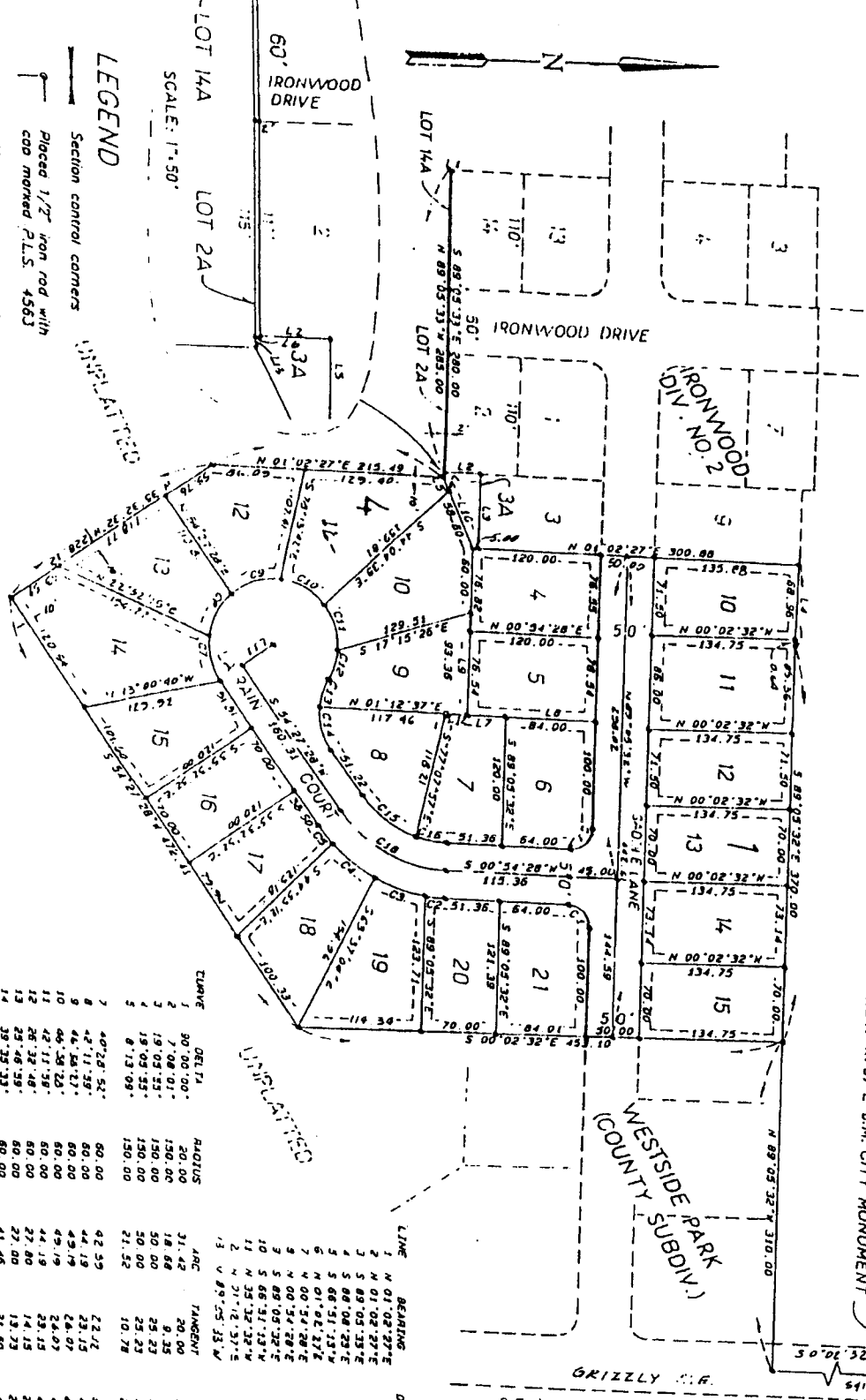
A REPLAT OF A PORTION OF LOTS 7, 8 & 9 OF BLOCK 1 AND LOTS 6, 7 & 8 BLOCK 2  
OF THE FIRST AMENDED PLAT OF WESTSIDE PARK DIVISION NO. 1;  
AN ADDITION TO THE CITY OF IDAHO FALLS, BONNEVILLE COUNTY IDAHO  
A PORTION OF THE N.W. 1/4 OF SECTION 26, TOWNSHIP 2 NORTH, RANGE 37 EAST B.M.

N.W. CORNER SECTION 26  
CITY MONUMENT

N 88°57'33"W 2614.26

2614.26  
BASIS OF BEARING - CITY OF IDAHO FALLS CONTROL

NORTH 1/4 CORNER SECTION 26  
T.2N R.37E B.M. CITY MONUMENT



**LEGEND**

- Section control corners
- Placed 1/2" iron rod with cap marked P.L.S. 4563
- Utility easements are 10' wide along street
- Frontages: All others are 8' wide
- Designates a monument to be placed after construction.

SCALE: 1"=50'

LOT 14A

LOT 2A

CHORD

ARC

TANGENT

CHORD BEG.

LINE	BEARING	DISTANCE	CHORD	CHORD BEG.
1	N 01°02'32"E	21.00	42.55	5 45°54'28"W
2	N 01°02'32"E	21.00	42.55	5 45°54'28"W
3	S 89°05'32"E	21.00	42.55	5 45°54'28"W
4	S 89°05'32"E	21.00	42.55	5 45°54'28"W
5	S 89°05'32"E	21.00	42.55	5 45°54'28"W
6	N 01°02'32"E	21.00	42.55	5 45°54'28"W
7	N 00°54'32"E	21.00	42.55	5 45°54'28"W
8	S 89°05'32"E	21.00	42.55	5 45°54'28"W
9	S 89°05'32"E	21.00	42.55	5 45°54'28"W
10	S 89°05'32"E	21.00	42.55	5 45°54'28"W
11	N 01°02'32"E	21.00	42.55	5 45°54'28"W
12	N 01°02'32"E	21.00	42.55	5 45°54'28"W
13	S 89°05'32"E	21.00	42.55	5 45°54'28"W
14	S 89°05'32"E	21.00	42.55	5 45°54'28"W
15	S 89°05'32"E	21.00	42.55	5 45°54'28"W
16	S 89°05'32"E	21.00	42.55	5 45°54'28"W
17	S 89°05'32"E	21.00	42.55	5 45°54'28"W
18	S 89°05'32"E	21.00	42.55	5 45°54'28"W
19	S 89°05'32"E	21.00	42.55	5 45°54'28"W
20	S 89°05'32"E	21.00	42.55	5 45°54'28"W
21	S 89°05'32"E	21.00	42.55	5 45°54'28"W



**First American Title Company**  
Idaho Falls, Idaho 83404

This sketch is made solely for the purpose of assisting in locating the premises. The company assumes no liability for alleged loss or damage which may result from reliance on this map.