

IRONWOOD ESTATES

DIVISION NO. 5

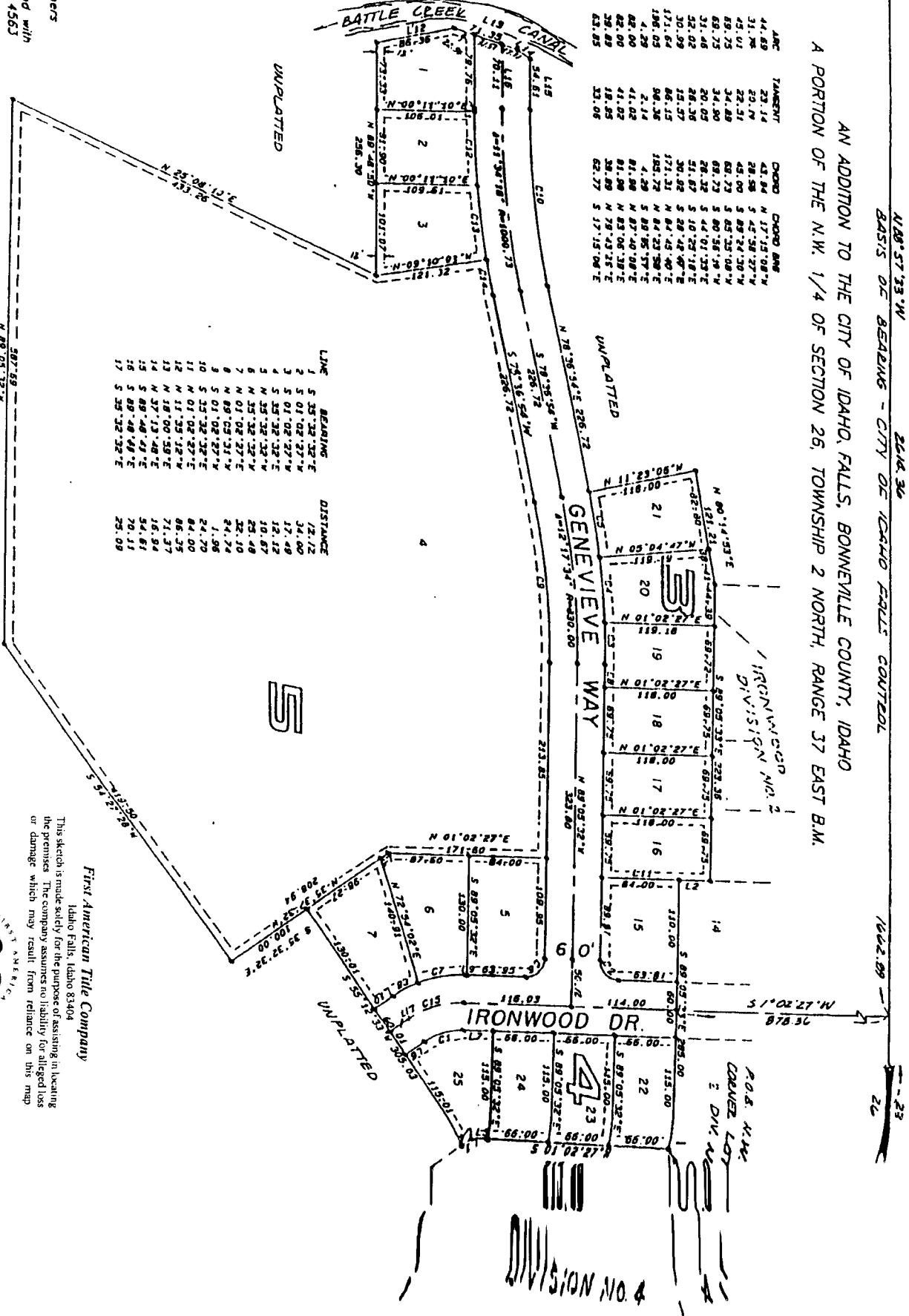


118° 57' 33" W
BASIS OF BEARING - CITY OF IDAHO FALLS CONTROL

AN ADDITION TO THE CITY OF IDAHO FALLS, BONNEVILLE COUNTY, IDAHO
A PORTION OF THE N.W. 1/4 OF SECTION 26, TOWNSHIP 2 NORTH, RANGE 37 EAST B.M.

LINE	DEG. MIN.	ADJUST	ARC	TANGENT	CHORD	CHORD BEG.
1	38° 34' 59"	70.00	44.89	23.14	48.94	N 17° 19' 58" E
2	88° 52' 01"	20.29	31.76	20.29	54.25	N 72° 59' 27" W
3	2° 59' 53"	880.00	45.01	22.31	48.00	S 88° 32' 10" W
4	4° 38' 48"	880.00	69.73	34.48	89.73	S 89° 32' 10" W
5	90° 07' 59"	20.00	31.46	20.00	48.32	S 44° 07' 53" E
6	22° 53' 30"	130.00	32.02	28.38	58.87	S 10° 52' 18" E
7	22° 53' 30"	130.00	30.89	28.38	58.87	S 10° 52' 18" E
8	12° 17' 34"	800.00	171.64	86.13	350.72	N 84° 32' 58" E
9	11° 34' 18"	870.73	186.05	96.36	418.29	N 89° 55' 57" E
10	0° 14' 18"	1020.73	4.29	2.14	4.29	N 89° 06' 58" E
11	4° 33' 29"	1020.73	82.00	41.02	81.98	N 83° 06' 58" E
12	4° 33' 29"	1020.73	79.89	39.89	81.98	N 79° 23' 18" E
13	2° 17' 04"	100.00	18.85	10.00	20.87	N 87° 15' 08" E
14	2° 17' 04"	100.00	18.85	10.00	20.87	N 87° 15' 08" E
15	38° 34' 59"	70.00	44.89	23.14	48.94	N 17° 19' 58" E

LINE	BEARING	DISTANCE
1	S 35° 32' 32" E	1/2.12
2	S 01° 02' 37" W	34.00
3	S 01° 02' 37" W	17.49
4	S 19° 32' 32" E	12.12
5	N 25° 32' 32" W	10.87
6	N 25° 32' 32" W	23.48
7	N 01° 02' 37" E	32.10
8	N 89° 02' 31" W	24.74
9	S 01° 02' 37" E	1.96
10	S 25° 32' 32" E	24.70
11	N 01° 02' 37" W	84.00
12	N 11° 55' 12" W	86.35
13	N 18° 00' 59" E	71.37
14	N 37° 13' 48" E	16.94
15	S 89° 48' 49" E	54.61
16	S 89° 48' 49" E	70.11
17	S 35° 32' 32" E	25.09



LEGEND

Section control corners

Placed 1/2" iron rod with cap marked P.L.S. 4563

Utility easements are 10' wide along the frontage of all lots. Side yard and rear yard easements are 8' unless otherwise shown.

This sketch is made solely for the purpose of assisting in locating the premises. The company assumes no liability for alleged loss or damage which may result from reliance on this map.

First American Title Company
Idaho Falls, Idaho 83404

