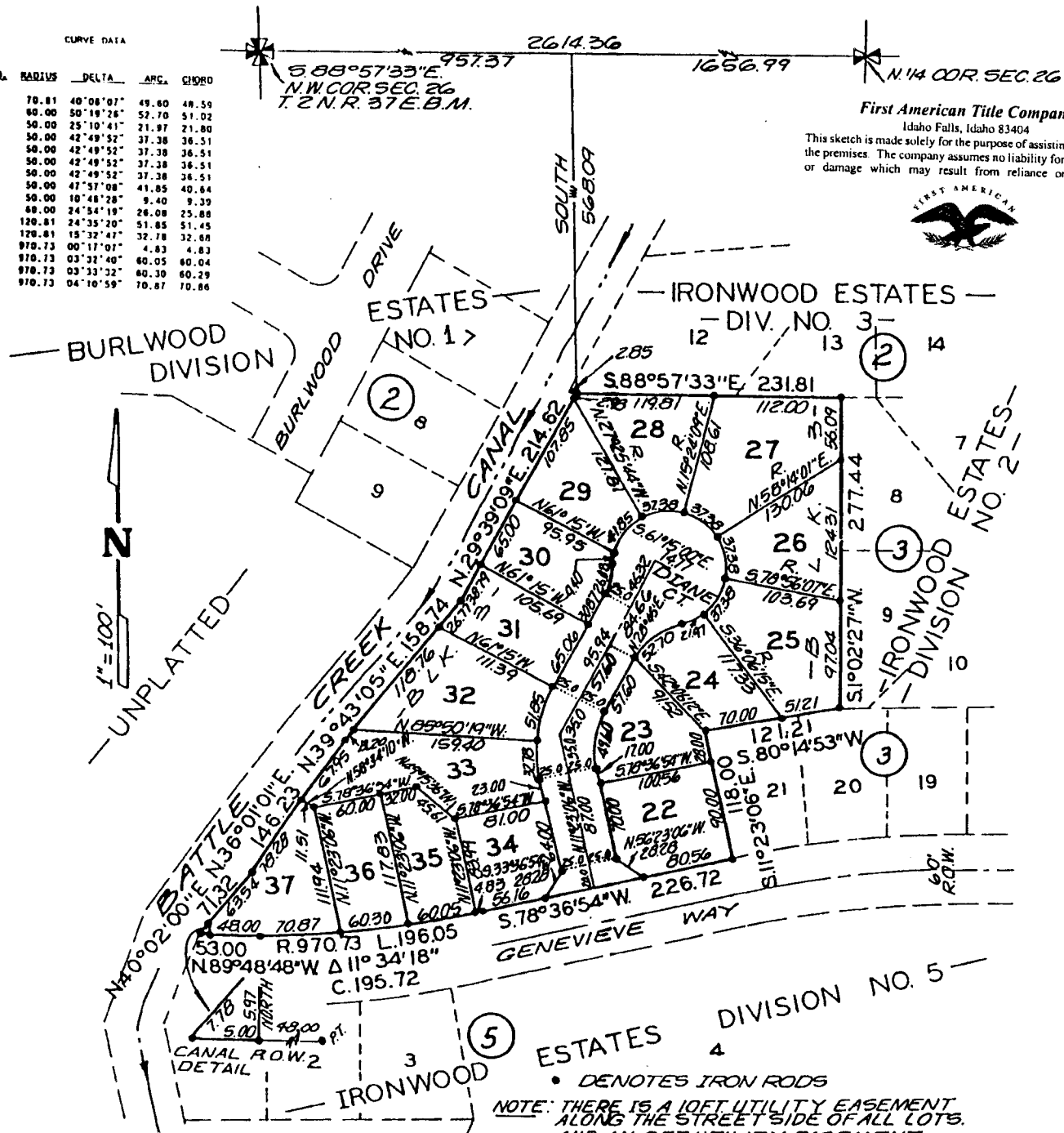


IRONWOOD ESTATES, DIVISION NO. 7

AN ADDITION TO THE CITY OF IDAHO FALLS, BONNEVILLE COUNTY, IDAHO
 A PORTION OF THE N.W. 1/4 OF SECTION 26, TOWNSHIP 2 NORTH, RANGE 37 E.B.M.

CURVE DATA

LOT NO.	RADIUS	DELTA	ARC	CHORD
23	70.81	40°08'07"	49.60	48.59
24	60.00	50°19'26"	52.70	51.02
25	50.00	25°10'41"	21.97	21.80
26	50.00	42°48'52"	37.38	36.51
27	50.00	42°48'52"	37.38	36.51
28	50.00	42°48'52"	37.38	36.51
29	50.00	47°57'08"	41.85	40.84
30	50.00	10°48'28"	9.40	9.39
31	60.00	24°54'19"	26.08	25.88
32	120.81	24°35'20"	51.85	51.45
33	120.81	15°32'47"	32.78	32.66
34	970.73	00°17'07"	4.83	4.83
35	970.73	03°32'40"	60.05	60.04
36	970.73	03°33'32"	60.30	60.29
37	970.73	04°10'59"	70.87	70.86



First American Title Company
 Idaho Falls, Idaho 83404
 This sketch is made solely for the purpose of assisting in locating the premises. The company assumes no liability for alleged loss or damage which may result from reliance on this map.



• DENOTES IRON RODS
 NOTE: THERE IS A 10FT UTILITY EASEMENT ALONG THE STREET SIDE OF ALL LOTS AND AN 8FT UTILITY EASEMENT ALONG THE SIDES AND BACKS OF ALL LOTS. THE EASEMENTS ALONG THE REAR OF LOTS 29, 30, 31, 32, 33 & 37 SHALL BE 10 FT. UTILITY EASEMENTS ARE RESERVED FOR POWER, TELEPHONE & CABLE T.V. ONLY NO GAS LINES ALLOWED.