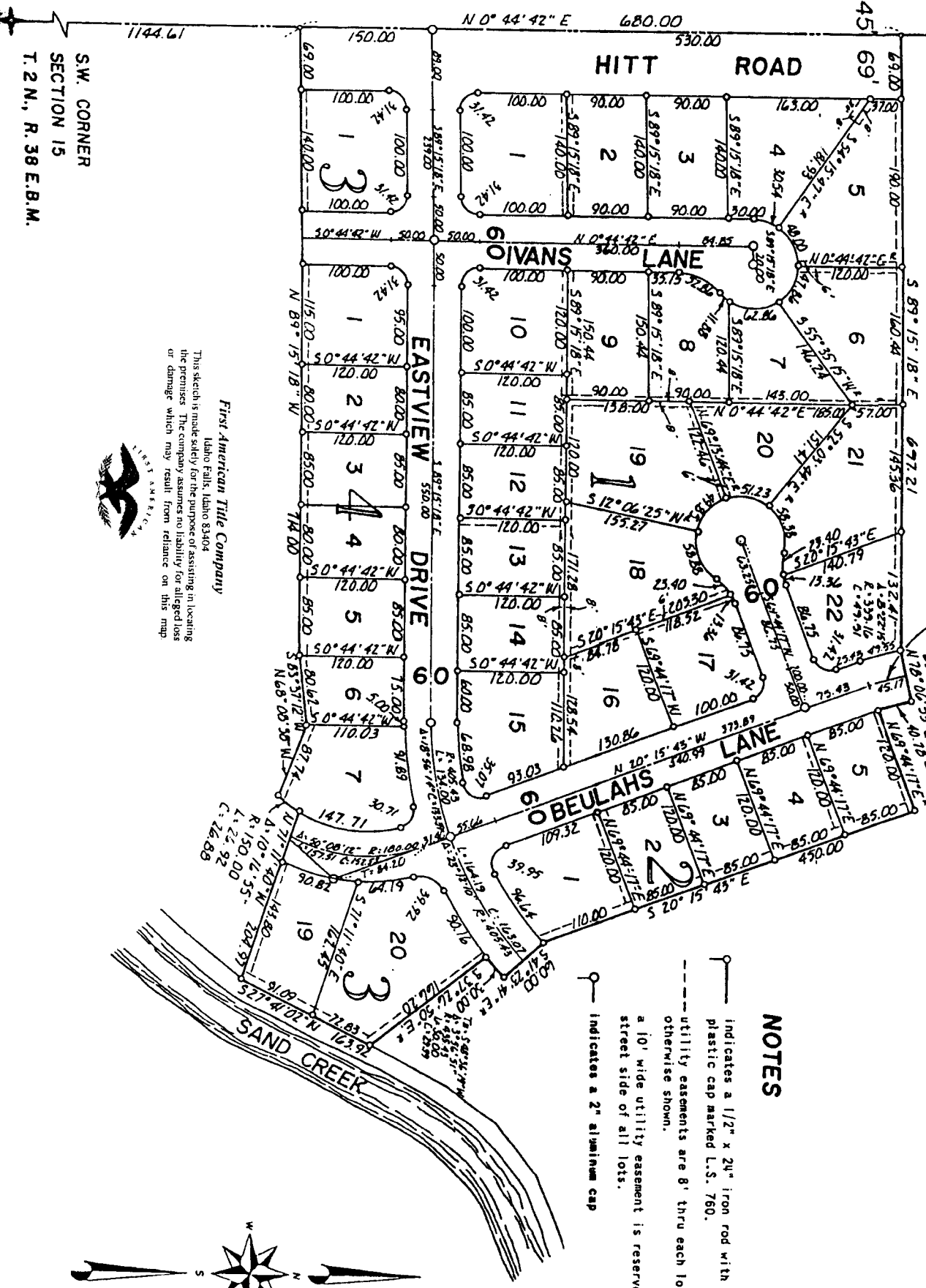


W. 1/4 CORNER  
SECTION 15  
T. 2 N., R. 38 E. B.M.

UNPLATTED

# I V A N S   A C R E S

TO THE CITY OF IDAHO FALLS, IDAHO  
DIVISION NO. 1  
PART OF THE S.W. 1/4 OF SEC. 15, T. 2 N., R. 38 E.

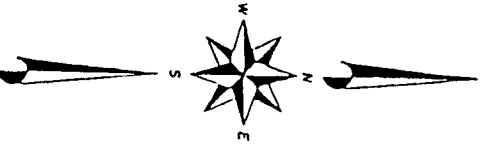


### NOTES

- indicates a 1/2" x 24" iron rod with a yellow plastic cap marked L.S. 760.
- utility easements are 8' thru each lot unless otherwise shown.
- - - a 10' wide utility easement is reserved along the street side of all lots.
- indicates a 2" aluminum cap

**First American Title Company**  
Idaho Falls, Idaho 83404

This sketch is made solely for the purpose of assisting in locating the premises. The company assumes no liability for alleged loss or damage which may result from reliance on this map.



S.W. CORNER  
SECTION 15  
T. 2 N., R. 38 E. B.M.

1144.61      150.00      N 0° 44' 42" E      680.00      530.00      45      69'      957.11