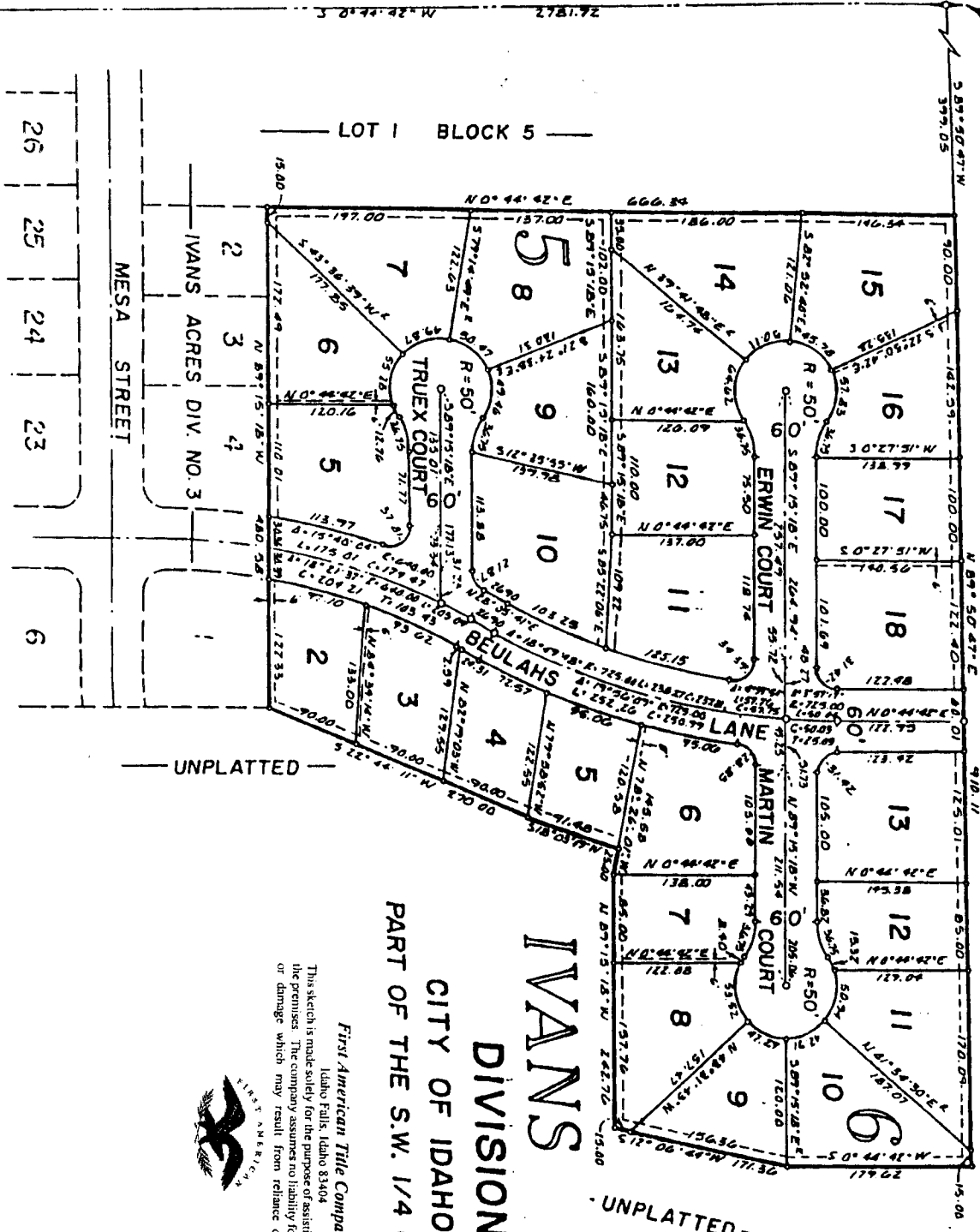


W. 1/4 COR. SEC. 15,  
T. 2N., R. 38 E.B.M.  
(CITY MONUMENT)

UNPLATTED

UNPLATTED



SW COR. SEC. 15,  
T. 2N., R. 38 E.B.M.  
(CITY MONUMENT)

**IVANS ACRES**  
**DIVISION NO. 4**  
CITY OF IDAHO FALLS, IDAHO  
PART OF THE S.W. 1/4 OF SEC. 15, T. 2N., R. 38 E.



*First American Title Company*  
Idaho Falls, Idaho 83404  
This sketch is made solely for the purpose of assisting in locating the premises. The company assumes no liability for alleged loss or damage which may result from reliance on this map.