

JENNIE LEE ADDITION DIVISION NO. 1

THE CITY OF IDAHO FALLS, IDAHO
Part of SW 1/4 of the NE 1/4 of Sec. 29 T. 2 N. R. 38 E. B.M.

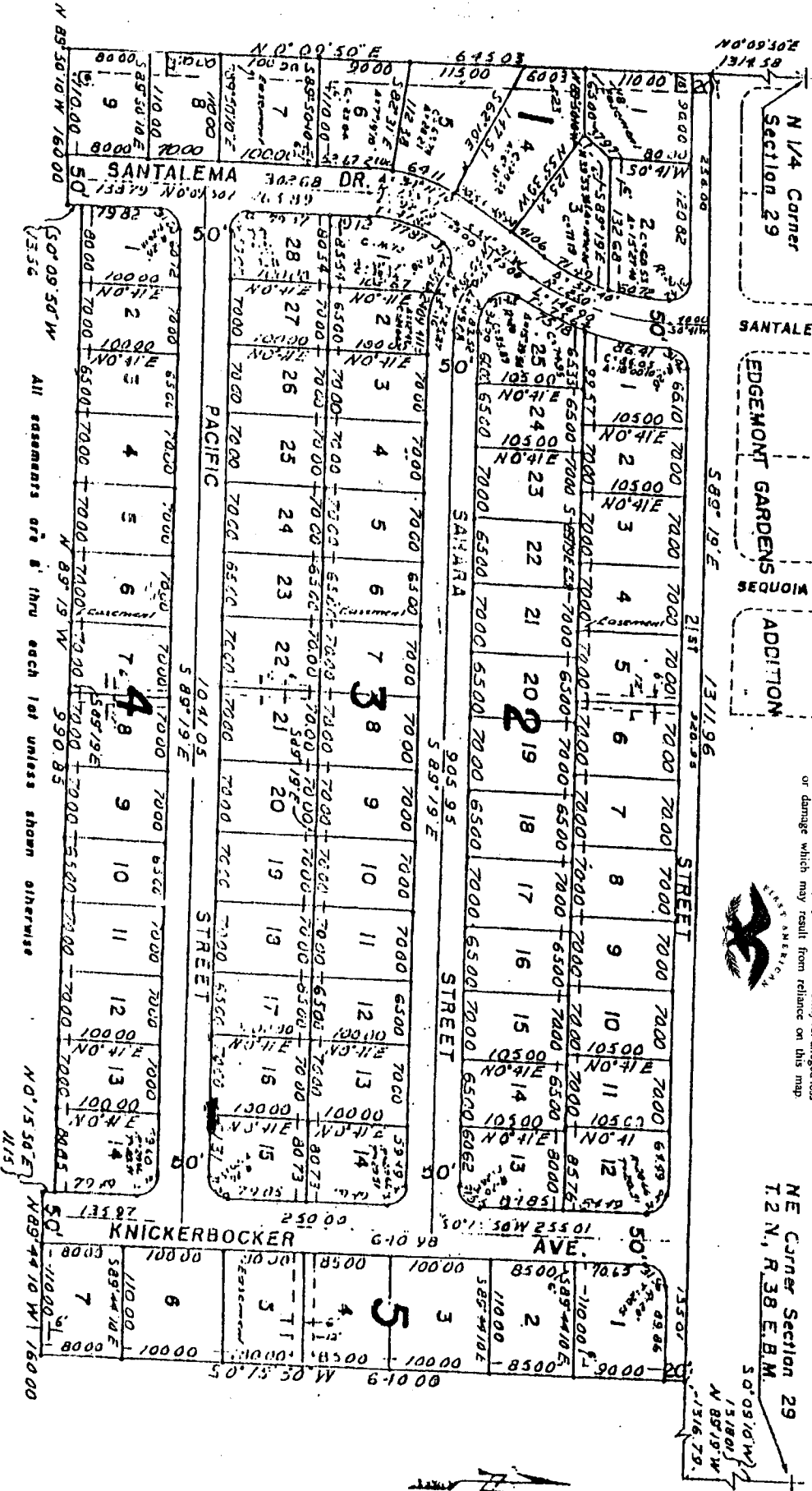
First American Title Company

Idaho Falls, Idaho 83404

This sketch is made solely for the purpose of assisting in locating the premises. The company assumes no liability for alleged loss or damage which may result from reliance on this map.



NE Corner Section 29
T. 2 N., R. 38 E. B.M.



All easements are thru each lot unless shown otherwise

NO. 15367 (M15)