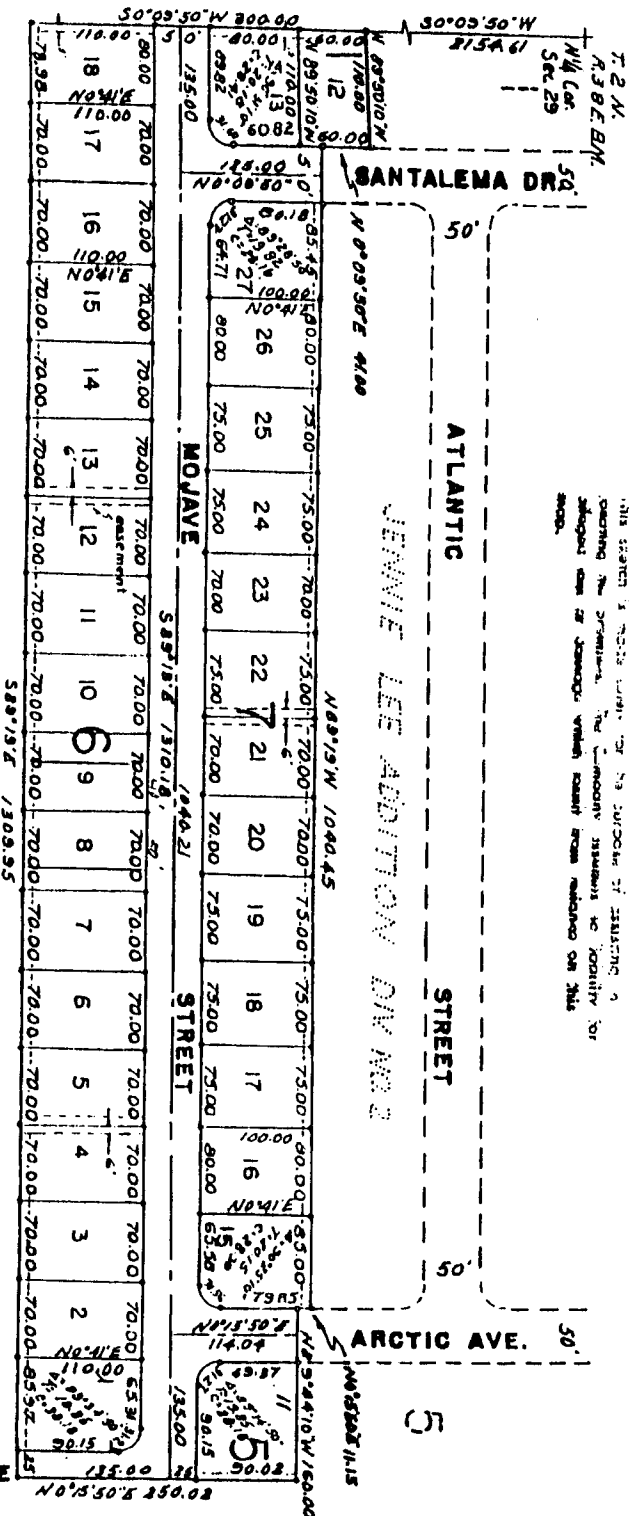


JENNIE LEE ADDITION

DIVISION NO 3

TO
 THE CITY OF IDAHO FALLS, IDAHO
 Part of
 SW 1/4 of the NE 1/4 of Sec 29
 T. 2 N. R 38 E.B.M.

THIS SKETCH IS MADE SOLELY FOR THE PURPOSE OF ASSISTING IN
 CARRYING OUT THE PROVISIONS OF THE ORDINANCE RELATIVE TO THE
 ADJUSTMENT OF THE BOUNDARIES OF THE CITY OF IDAHO FALLS, IDAHO
 WHICH RESULT FROM REVISIONS ON THIS
 MAP.



First American Title Company
 Idaho Falls, Idaho 83404
 This sketch is made solely for the purpose of assisting in locating
 the premises. The company assumes no liability for alleged loss
 or damage which may result from reliance on this map.



CASPIAN AVE

