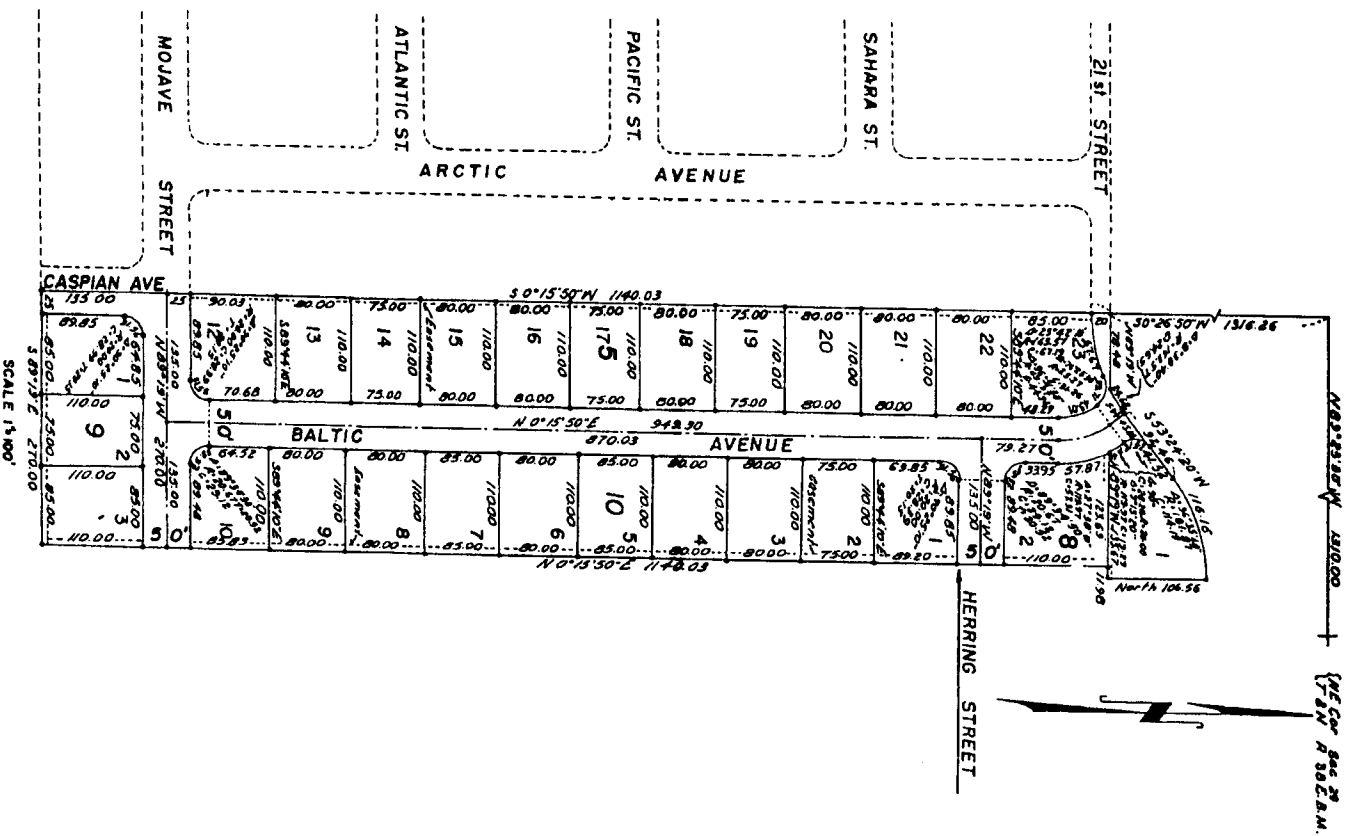


JENNIE LEE ADDITION

DIVISION NO. 4

AND
 SECOND AMENDED PLAT
 UNIVERSITY MANOR DIVISION NO. 1
 OF LOT 1 BLOCK 5

TO
 THE CITY OF IDAHO FALLS, IDAHO
 Part of
 SE 1/4 of the NE 1/4 of Sec. 29
 T. 2 N. R. 38 E.B.M.



First American Tile Company
 Idaho Falls, Idaho 83404

This sketch is made solely for the purpose of assisting in locating the premises. The company assumes no liability for alleged loss or damage which may result from reliance on this map.

ALL EASEMENTS ARE SHOWN EACH LOT UNLESS SHOWN OTHERWISE.