

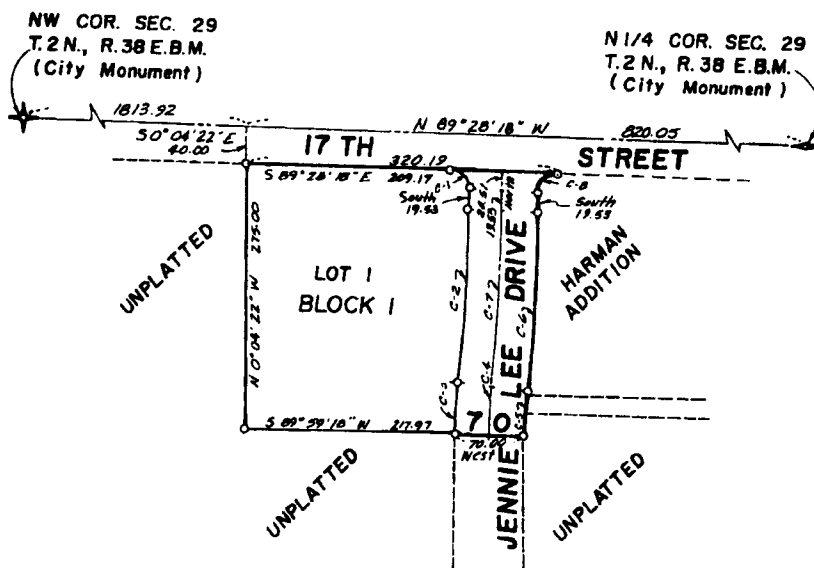
WEST JENNIE LEE ADDITION

DIVISION NO. 15 TO THE CITY OF IDAHO FALLS, IDAHO PART OF THE NW 1/4 OF SEC. 29, T. 2 N., R. 38 E.

First American Title Company

Idaho Falls, Idaho 83404

This sketch is made solely for the purpose of assisting in locating the premises. The company assumes no liability for alleged loss or damage which may result from reliance on this map.



C.#	A	R	L	C	T
1	89° 28' 18"	21.02	32.83	29.59	20.83
2	5° 44' 57"	1778.86	178.49	178.42	89.32
3	5° 44' 57"	541.86	54.37	54.35	27.21
4	5° 44' 57"	504.86	50.86	50.84	25.45
5	5° 44' 57"	471.86	47.35	47.33	23.69
6	5° 44' 57"	1848.86	185.51	185.44	92.83
7	5° 44' 57"	1813.86	182.01	181.92	91.08
8	90° 31' 42"	20.00	31.00	28.41	20.18

NOTES

indicates a 1/2" x 24" iron rod.

utility easements are 8' thru each lot unless otherwise shown.

a 10' wide utility easement is reserved along the street side of all lots.