

WEST JENNIE LEE ADDITION

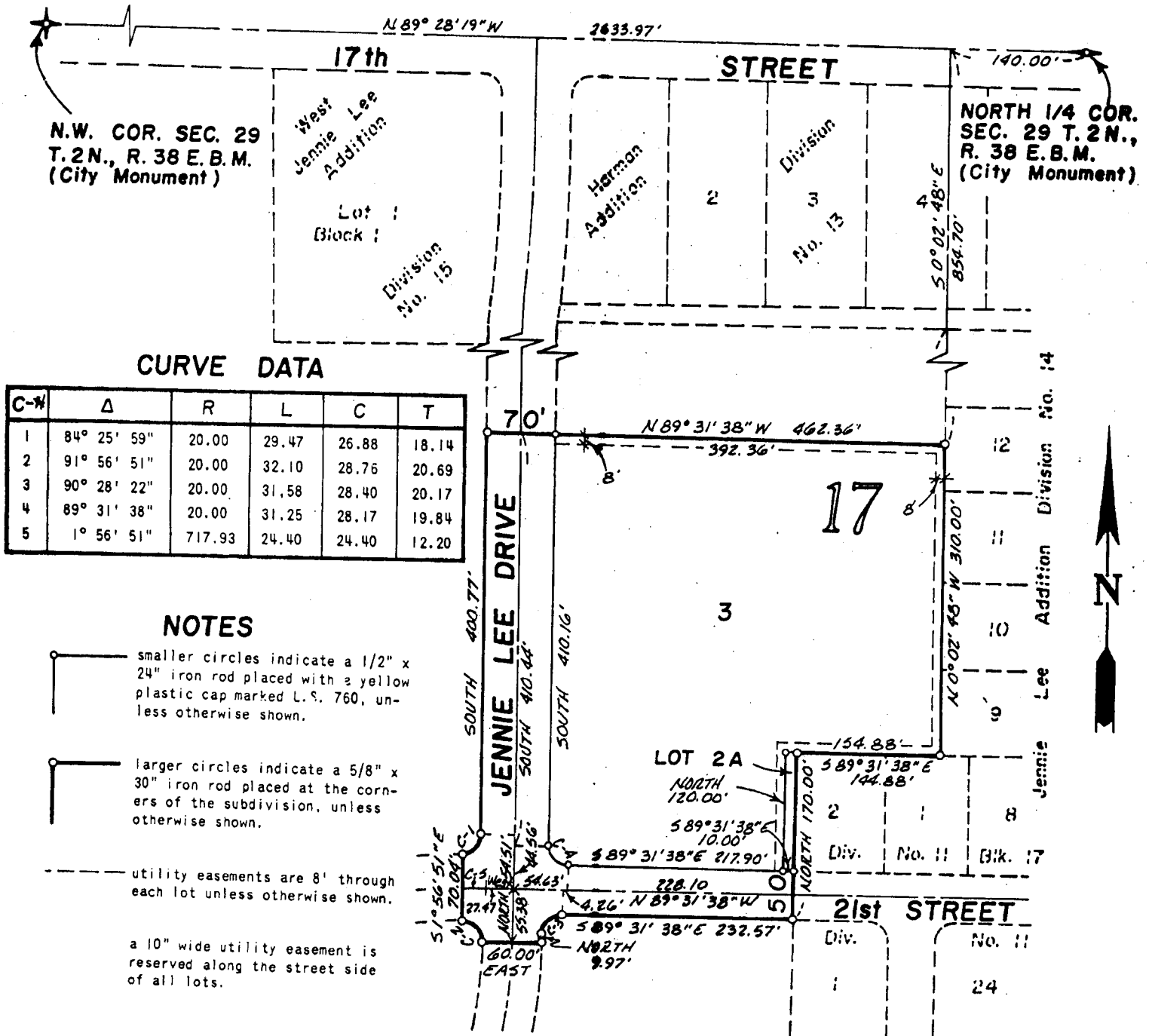
DIVISION NO. 16

TO THE CITY OF IDAHO FALLS, IDAHO
PART OF THE N.W. 1/4 SEC. 29, T.2N., R.38E.B.M.

First American Title Company

Idaho Falls, Idaho 83404

This sketch is made solely for the purpose of assisting in locating the premises. The company assumes no liability for alleged loss or damage which may result from reliance on this map.



CURVE DATA

C-N	Δ	R	L	C	T
1	84° 25' 59"	20.00	29.47	26.88	18.14
2	91° 56' 51"	20.00	32.10	28.76	20.69
3	90° 28' 22"	20.00	31.58	28.40	20.17
4	89° 31' 38"	20.00	31.25	28.17	19.84
5	1° 56' 51"	717.93	24.40	24.40	12.20

NOTES

— smaller circles indicate a 1/2" x 24" iron rod placed with a yellow plastic cap marked L.S. 760, unless otherwise shown.

— larger circles indicate a 5/8" x 30" iron rod placed at the corners of the subdivision, unless otherwise shown.

--- utility easements are 8' through each lot unless otherwise shown.

a 10" wide utility easement is reserved along the street side of all lots.

