

JOHNS HEIGHTS SUBDIVISION DIVISION NO. 1

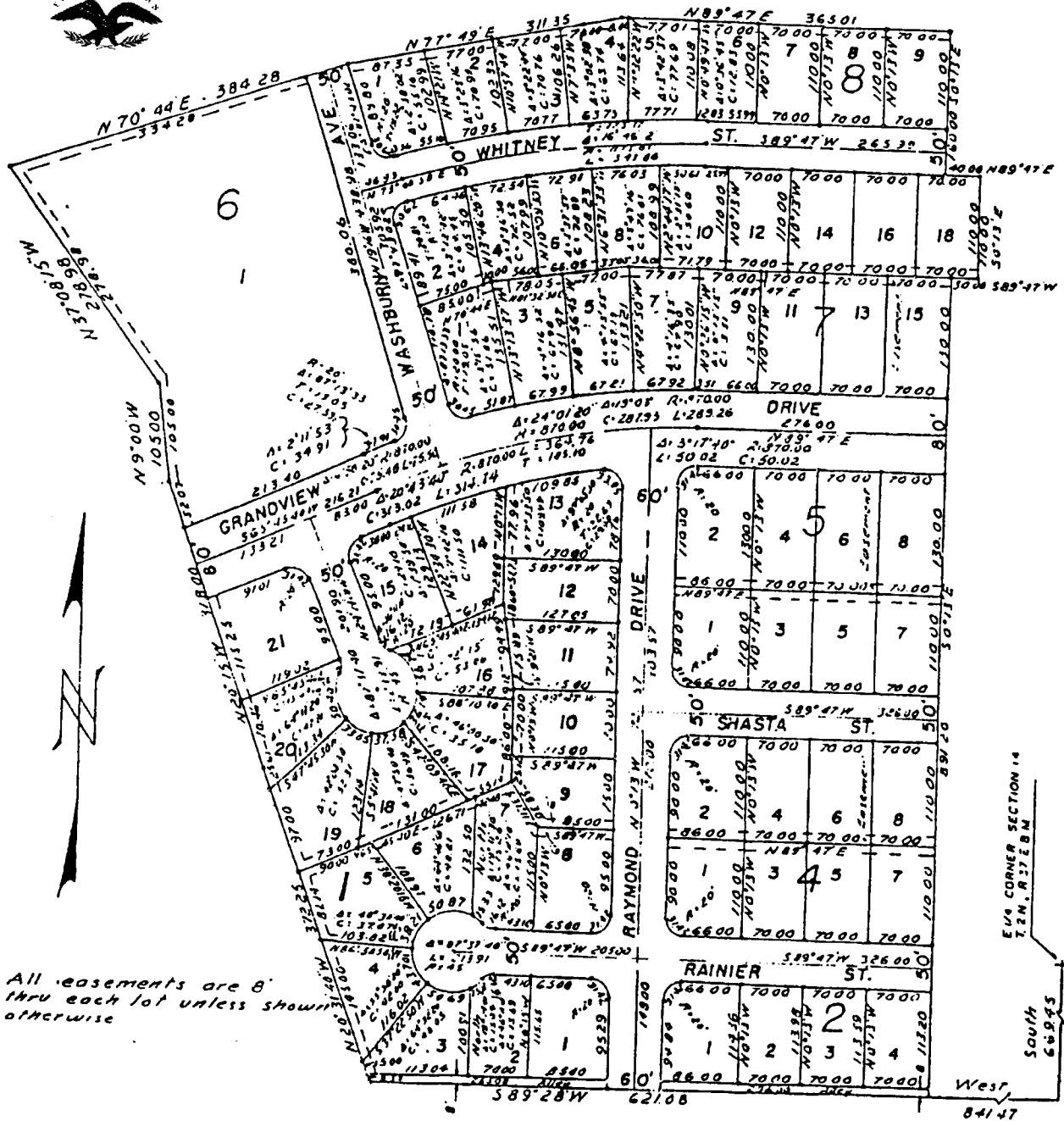
TO
THE CITY OF IDAHO FALLS, IDAHO

Part of

E 1/2 of Section 14 T.2N., R.37 E.B.M.

First American Title Company
Idaho Falls, Idaho 83404

This sketch is made solely for the purpose of assisting in locating the premises. The company assumes no liability for alleged loss or damage which may result from reliance on this map.



All easements are 8' thru each lot unless shown otherwise

E 1/4 CORNER SECTION 14
T.2N., R.37E.B.M.

South
68.945

West
841.47