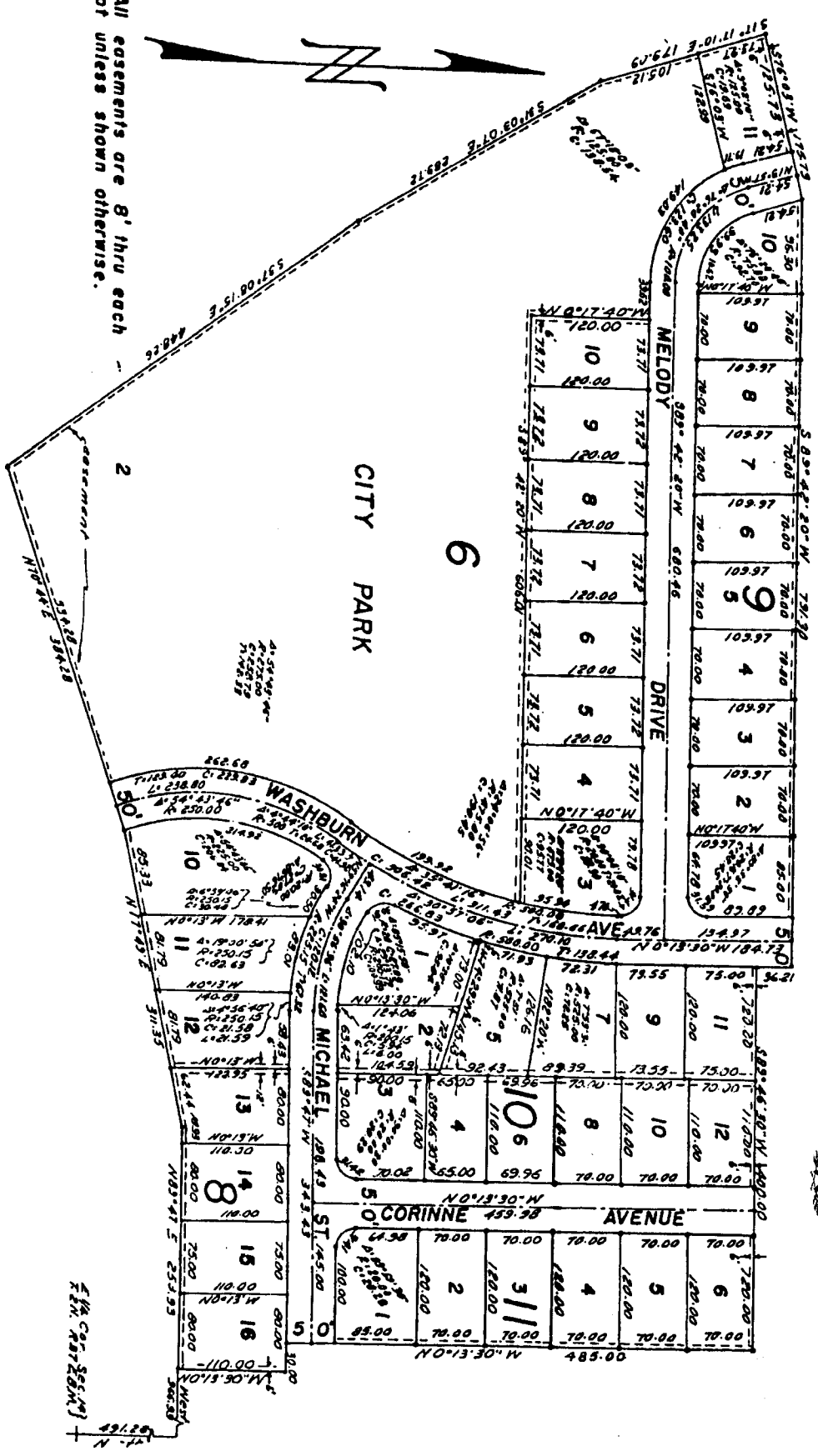


JOHNS HEIGHTS SUBDIVISION DIVISION NO. 2

THE CITY OF IDAHO FALLS, IDAHO
Part of
E 1/2 of Section 14 T.2N, R.37 E.B.M.

First American Title Company
Idaho Falls, Idaho 83404
This sketch is made solely for the purpose of assisting in locating the premises. The company assumes no liability for alleged loss or damage which may result from reliance on this map.



File Cor. 20728 (M)