

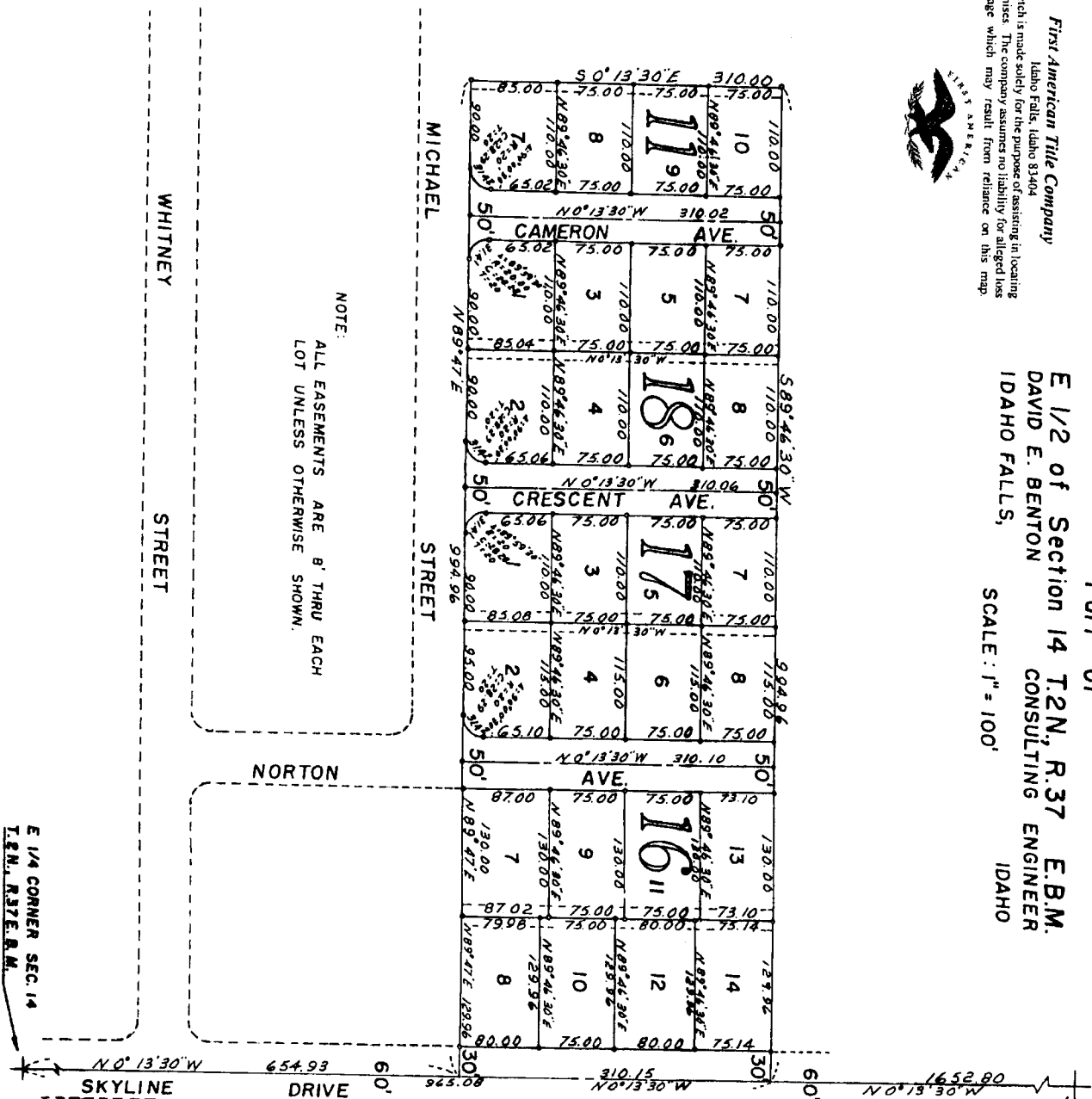
JOHNS HEIGHTS SUBDIVISION DIVISION NO. 7

THE CITY OF IDAHO FALLS, IDAHO
Part of

First American Tile Company
Idaho Falls, Idaho 83404
This sketch is made solely for the purpose of assisting in locating the premises. The company assumes no liability for alleged loss or damage which may result from reliance on this map.



E 1/2 of Section 14 T.2N., R.37 E.B.M.
DAVID E. BENTON
CONSULTING ENGINEER
IDAHO FALLS, IDAHO
SCALE: 1" = 100'



E 1/4 CORNER SEC. 14
T.2N., R.37E.B.M.

NE CORNER SEC. 14
T.2N., R.37 E.B.M.