

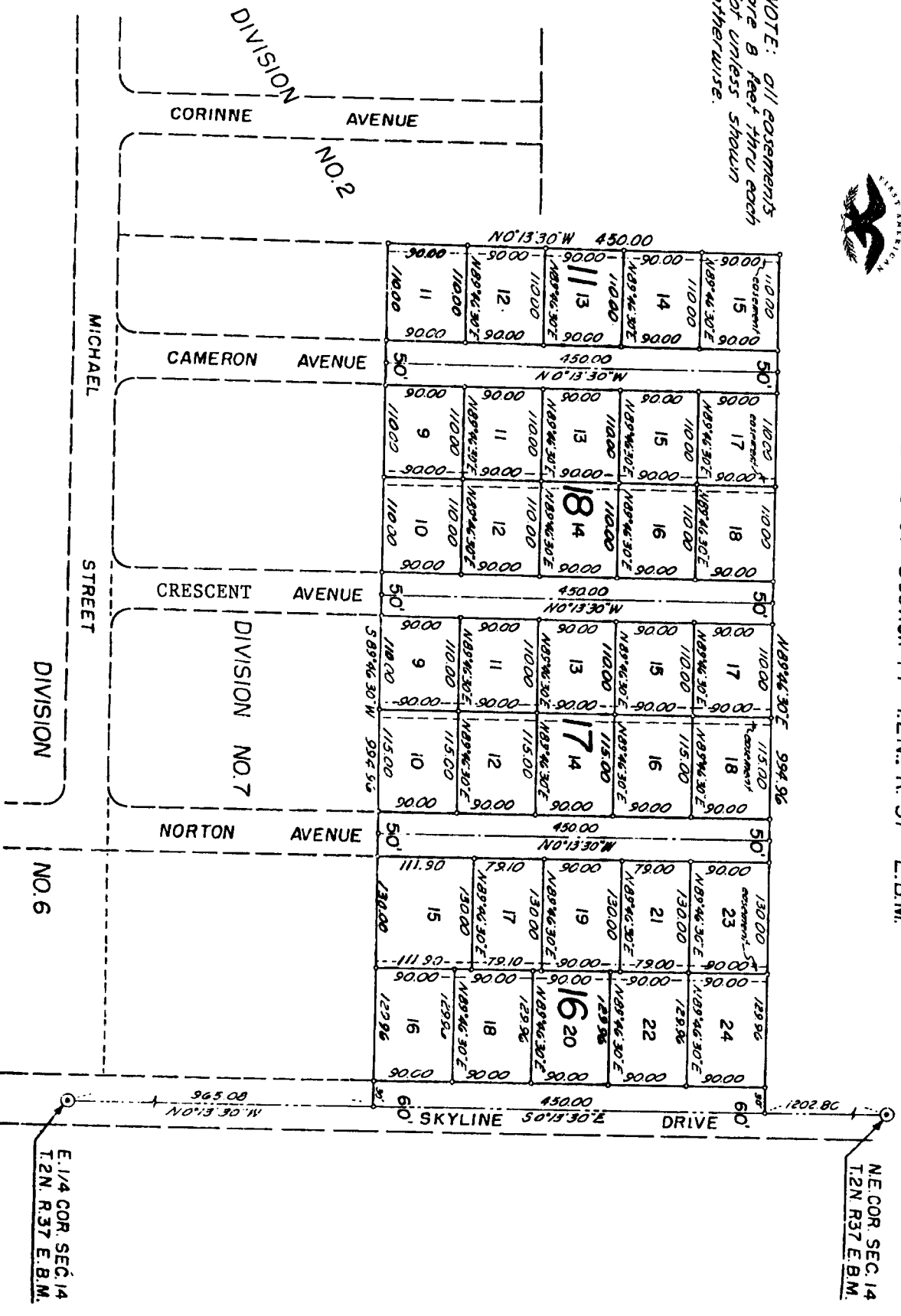
JOHNS HEIGHTS SUBDIVISION DIVISION NO. 10

First American Title Company
 Idaho Falls, Idaho 83404
 This sketch is made solely for the purpose of assisting in locating the premises. The company assumes no liability for alleged loss or damage which may result from reliance on this map.



THE CITY OF IDAHO FALLS, IDAHO
 Part of
 E 1/2 of Section 14 T2N. R. 37 E.B.M.

NOTE: ALL GOVERNMENTS
 ARE 8 FEET THRU EACH
 OTHERWISE.



E. 1/4 COR. SEC. 14
 T2N. R. 37 E. B.M.

NE COR. SEC. 14
 T2N. R. 37 E. B.M.