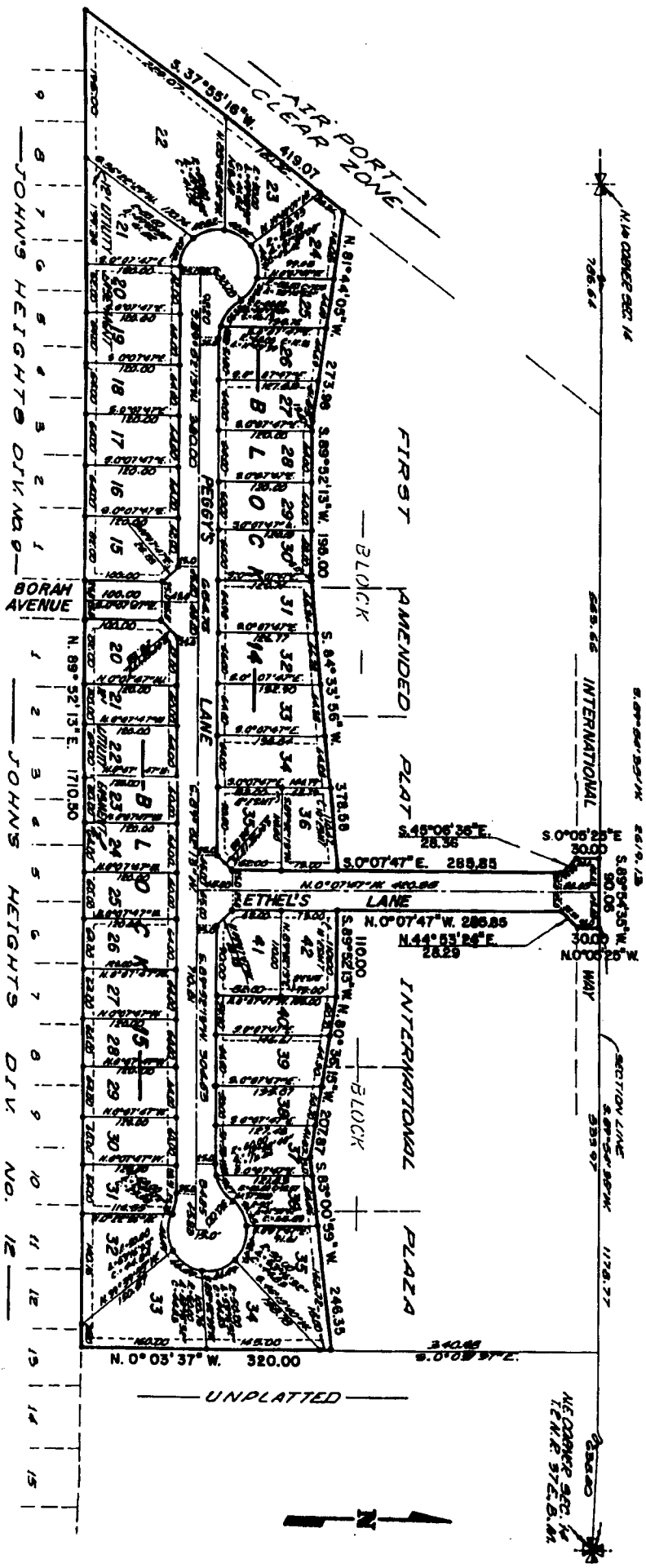


**JOHNS HEIGHTS ADDITION**  
**DIVISION NO. 14**  
**CITY OF IDAHO FALLS, BONNEVILLE COUNTY, IDAHO**  
**BEING A REPLAT OF A PORTION OF THE FIRST AMENDED PLAT OF INTERNATIONAL PLAZA**  
**PART OF THE N. 1/2 OF THE NE. 1/4 OF SECTION 14, T. 2N. R. 37 E. 2M.**

*First American Title Company*  
 Idaho Falls, Idaho 83404  
 This sketch is made solely for the purpose of assisting in locating the premises. The company assumes no liability for alleged loss or damage which may result from reliance on this map.



MEASURED SEC. 14  
 12 N. 1/2 37 E. 2 M.