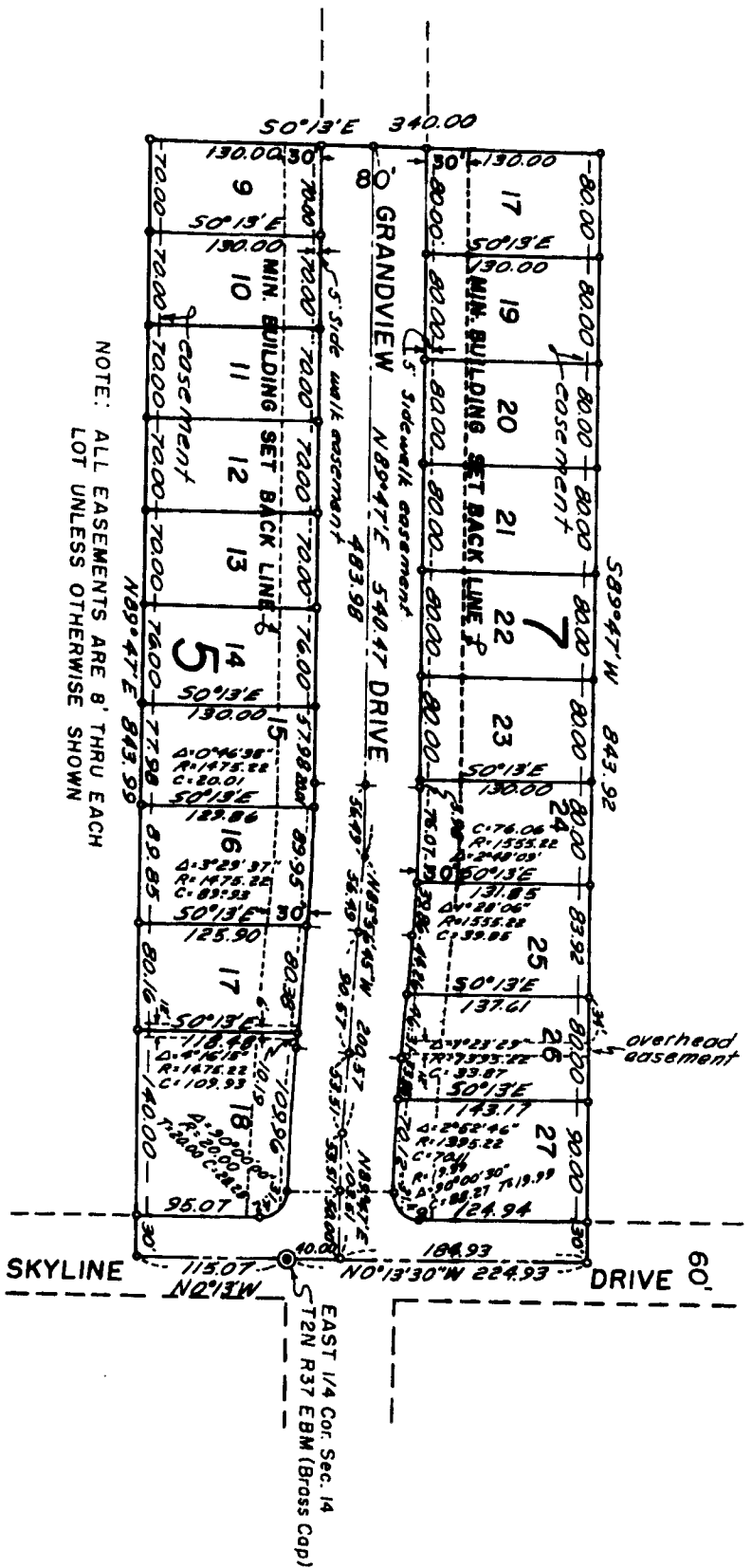


JOHNS HEIGHTS SUBDIVISION NO. 4

THE CITY OF IDAHO FALLS, IDAHO
 Part of
 E 1/2 of Section 14 T.2N., R.37 E.B.M.



NOTE: ALL EASEMENTS ARE 8' THRU EACH LOT UNLESS OTHERWISE SHOWN

First American Title Company
 Idaho Falls, Idaho 83404
 This sketch is made solely for the purpose of assisting in locating the premises. The company assumes no liability for alleged loss or damage which may result from reliance on this map.

