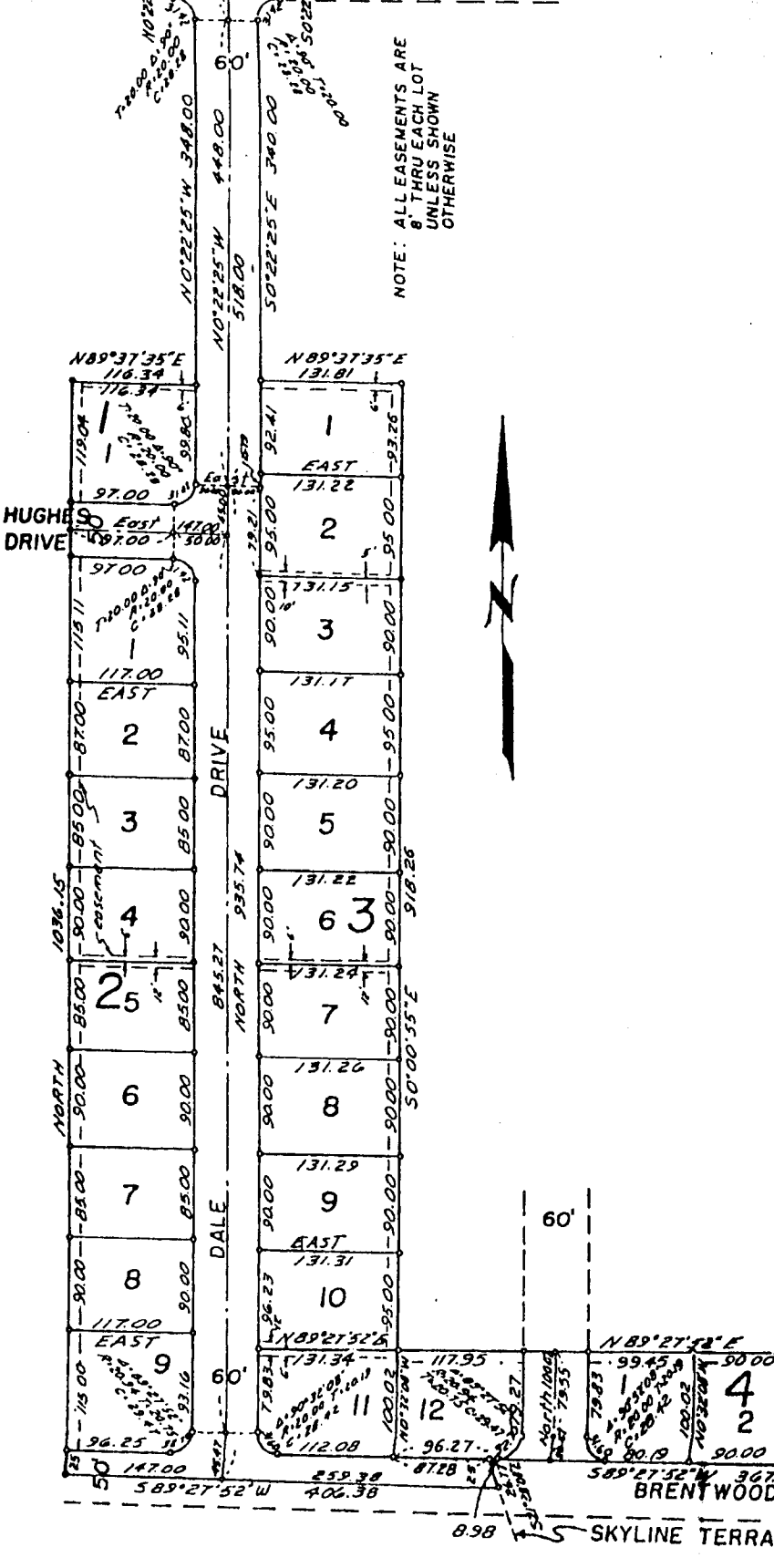


JOSSIE HUGHES ADDITION

DIVISION NO. 1
 TO
 THE CITY OF IDAHO FALLS, IDAHO
 Part of
 NE 1/4 Sec. 23 T2N R37 E.B.M.

U.S. HYWAY NO. 91
 N89°37'35"E 100.00'
 N.E. COR. SEC. 23
 T2N R37 E.B.M.
 (Brass Cap)
 2065.40
 (WEST BROADWAY)

NOTE: ALLEASMENTS ARE
 8" THRU EACH LOT
 UNLESS SHOWN
 OTHERWISE



First American Title Company
 Idaho Falls, Idaho 83404
 This sketch is made solely for the purpose of assisting in locating
 the premises. The company assumes no liability for alleged loss
 or damage which may result from reliance on this map.

