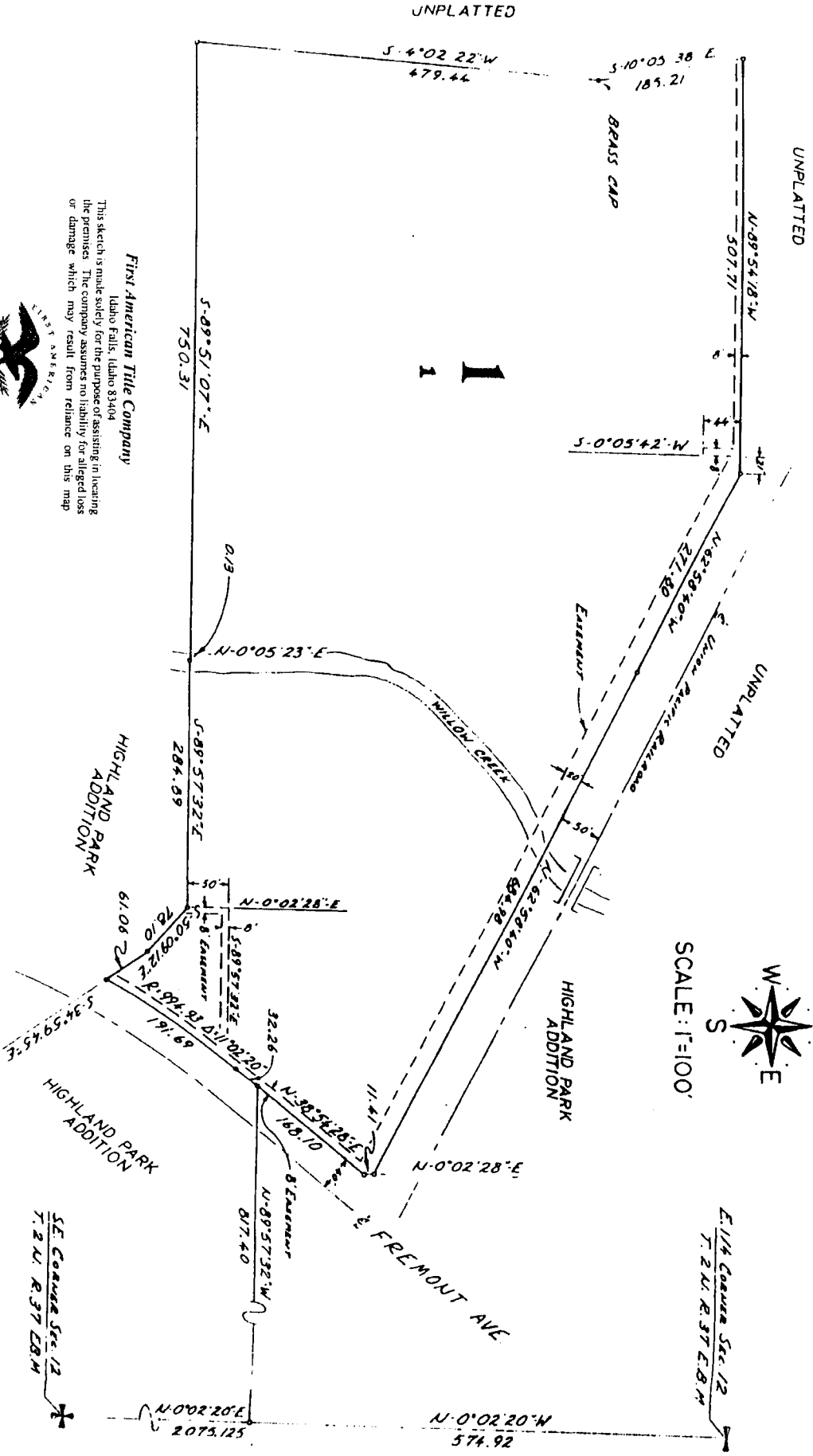


KEEFER OFFICE PARK ADDITION

TO THE CITY OF IDAHO FALLS, BONNEVILLE COUNTY, IDAHO
 WHICH ALSO INCLUDES REPLATTING A PORTION OF BLOCKS 3, 4, 5, & 6 OF THE HIGHLAND PARK ADDITION
 A PORTION OF THE S.E. 1/4 OF SEC. 12, T. 2 N., R. 37 E., B.M.



First American Title Company
 Idaho Falls, Idaho 83404
 This sketch is made solely for the purpose of assisting in locating the premises. The company assumes no liability for alleged loss or damage which may result from reliance on this map.

