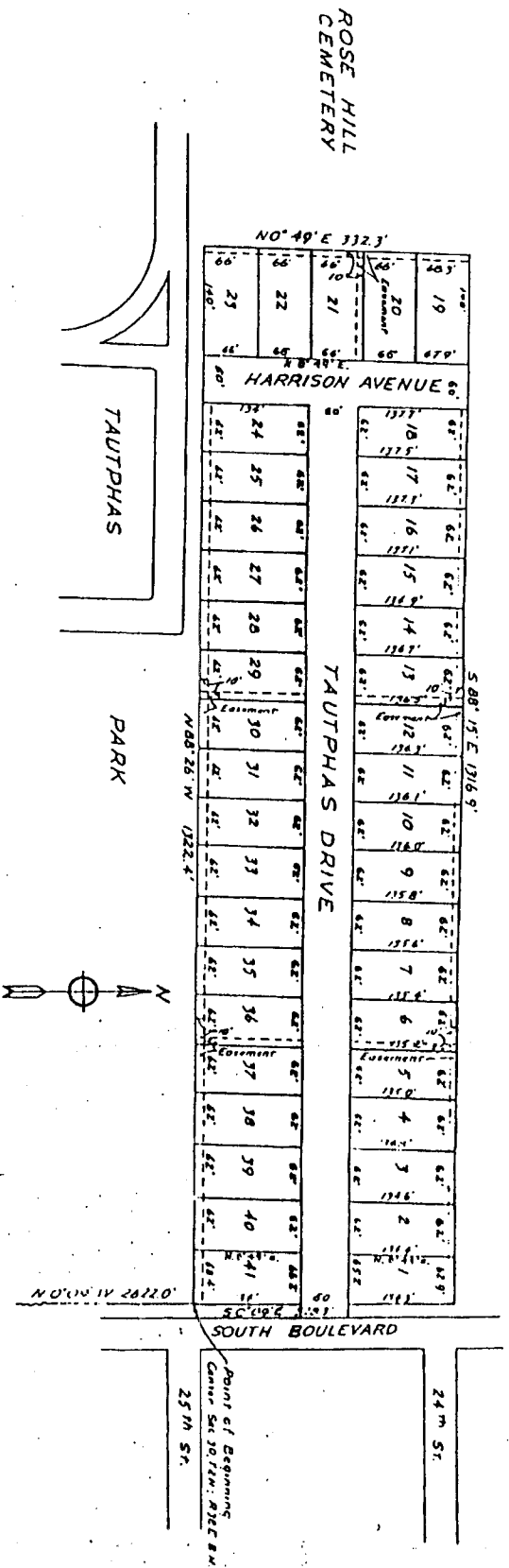


KEEPER'S ADDITION

CITY OF IDAHO FALLS
BONNEVILLE COUNTY, IDAHO



First American Title Company
 Idaho Falls, Idaho 83404

This sketch is made solely for the purpose of assisting in locating the premises. The company assumes no liability for alleged loss or damage which may result from reliance on this map.



South & Corner Sec 30 T4N, R22E & M.

Point of Beginning
 Corner Sec 30 T4N, R22E & M.
 25 TH ST.