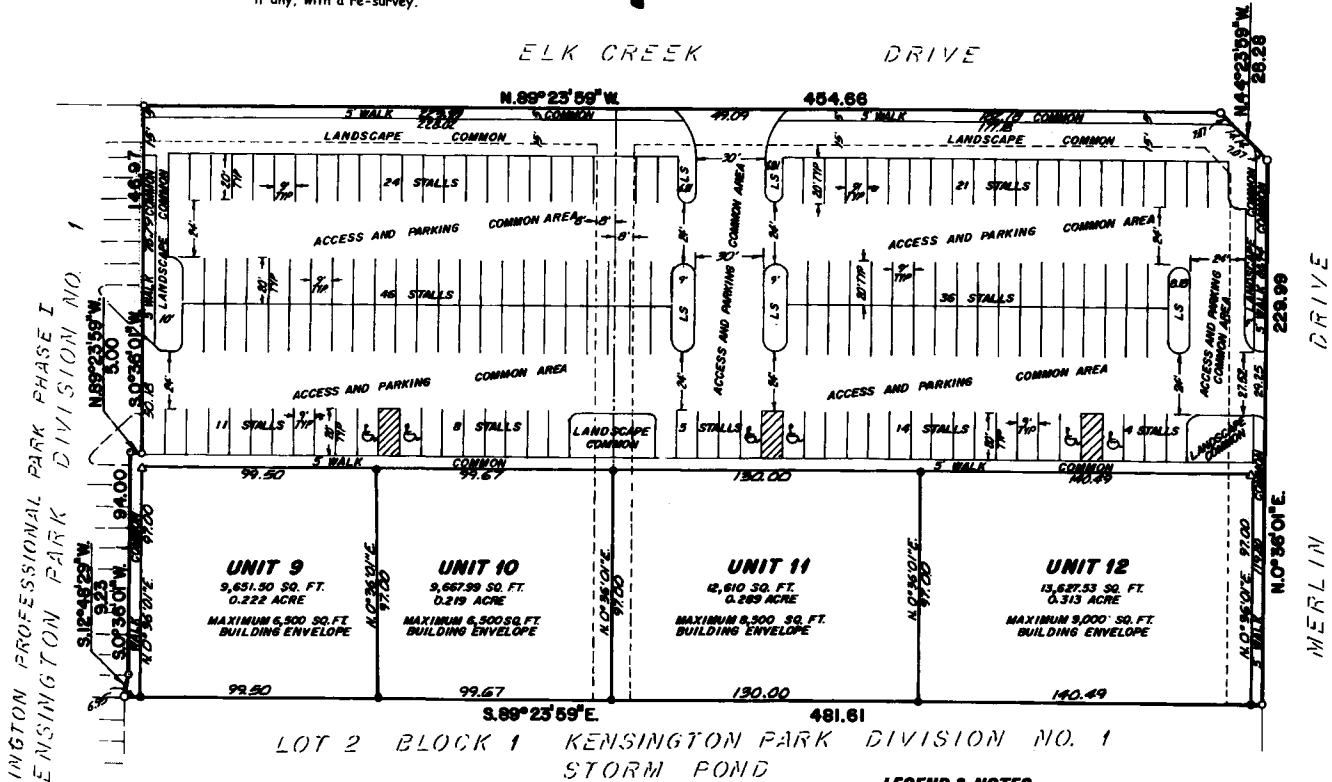


KENSINGTON PROFESSIONAL PARK PHASE II

PURSUANT TO IDAHO CODE, TITLE 55, CHAPTER 15
CITY OF IDAHO FALLS, BONNEVILLE COUNTY, IDAHO

BEING PART OF LOT 1 BLOCK 1 KENSINGTON PARK DIVISION NO. 1
IN THE N.W. 1/4 OF THE N.W. 1/4 OF SECTION 33 T.2 N. R. 38 E., B.M.

First American Title Company
Idaho Falls, Id 83404
While this is a photographic
reproduction of the recorded
plat, the company assumes
no liability for variations,
if any, with a re-survey.



LOT 1 BLOCK 1 KENSINGTON PARK DIVISION NO. 1

LOT 2 BLOCK 1 KENSINGTON PARK DIVISION NO. 1
STORM POND

LEGEND & NOTES

- 50" Steel Re-bar found with plastic caps stamped L.S.8785
- 12" Steel Re-bar found with plastic caps stamped L.S.8785
- △ Magnetic nail set in concrete
- 12" x 24" Steel Re-bar set with plastic caps stamped L.S.8785
- Utility easements are shown feet wide unless otherwise noted
- L.S. Landscape
- Ⓜ Handicap parking stalls
- Unit boundary

Each unit consists of the entire property enclosed by the Unit Boundary lines including the land and all improvements thereon, but are subject to the covenants, conditions, restrictions, and easements set forth in the declaration for maintenance purposes, etc.

All unit lines are measured perpendicular to another parallel with the North and East plat boundaries.

Landscaping, walk, vehicular access and 154 parking stalls areas are all COMMON AREAS

For District 7 Health Department approval, see Kensington Park plat recorded 922603 under Instrument No. 1126381.