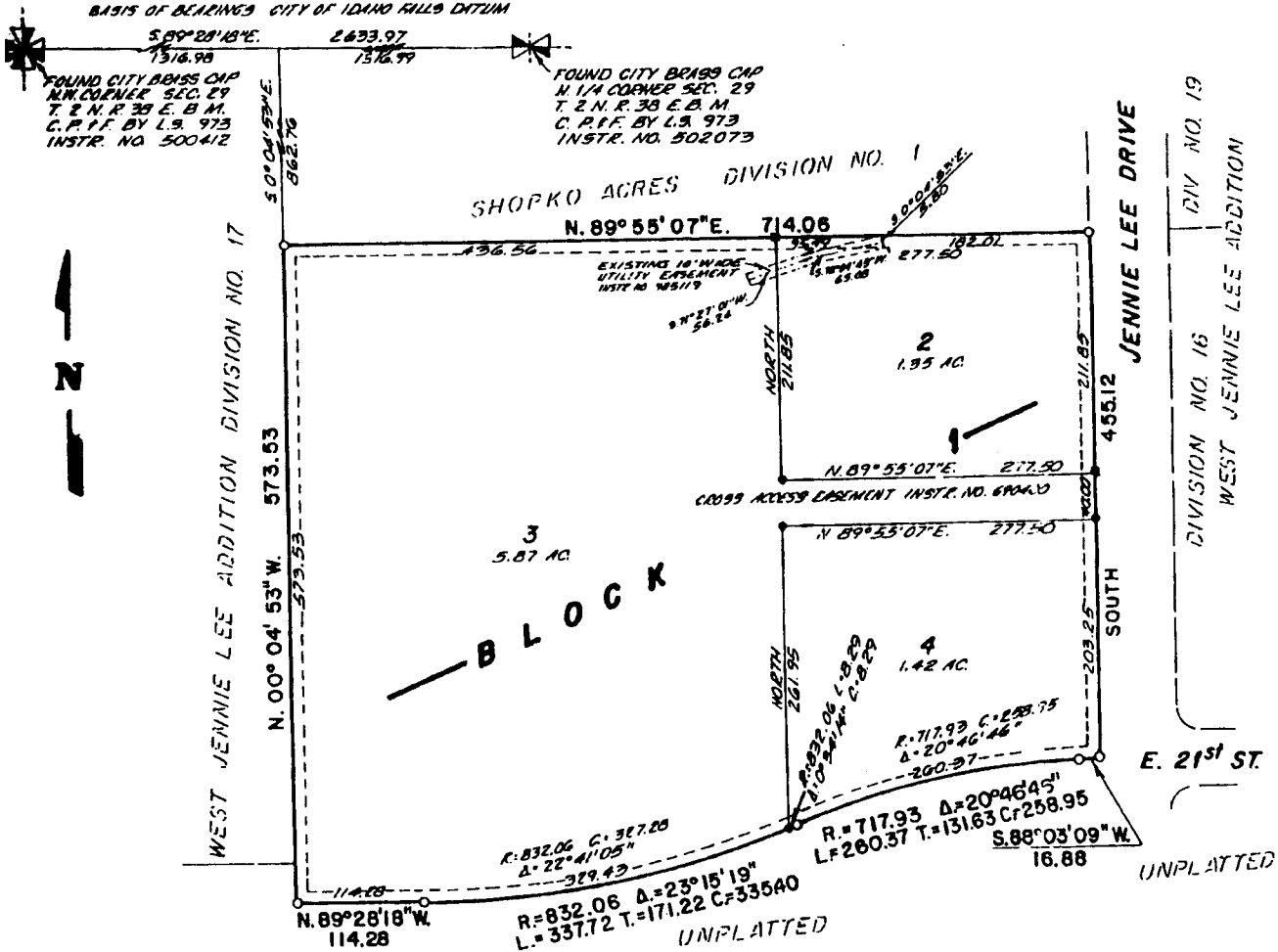


FIRST AMENDED PLAT OF KEYSTONE ADDITION DIVISION NO. 1

TO THE CITY OF IDAHO FALLS, BONNEVILLE COUNTY, IDAHO
BEING A REPLAT OF THE KEYSTONE ADDITION, DIVISION NO. 1
IN THE NW 1/4 OF SECTION 29 T. 2 N. R. 38 E. B. M.



UNPLATTED

LEGEND & NOTES

- 5/8" Steel Re-bar found with plastic caps stamped L.S. 827
- 1/2" x 24" Steel Re-bar set with plastic cap stamped L.S. 8795
- Chiseled X in concrete

----- A Ten foot wide Utility Easement is hereby granted along Jennie Lee Drive. All other easement widths are ten feet wide unless otherwise shown.

First American Title Company

Idaho Falls, Idaho 83404

This sketch is made solely for the purpose of assisting in locating the premises. The company assumes no liability for alleged loss or damage which may result from reliance on this map

