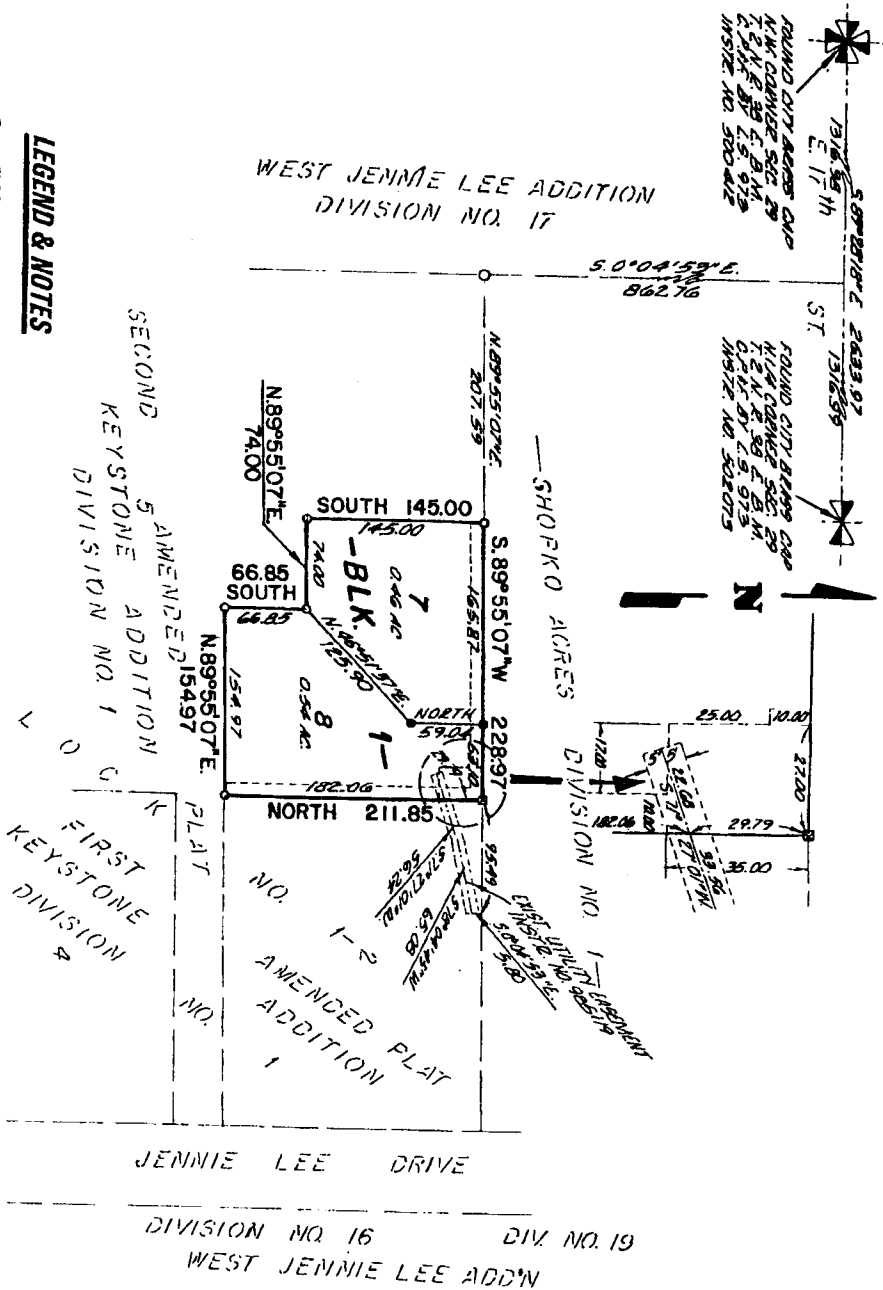


THIRD AMENDED PLAT OF KEYSTONE ADDITION DIVISION NO. 1

TO THE CITY OF IDAHO FALLS, BONNEVILLE COUNTY, IDAHO
BEING A REPLAT OF LOT 6, BLOCK 1, SECOND AMENDED PLAT OF KEYSTONE ADDITION, DIVISION NO. 1
IN THE NW 1/4 OF SECTION 29 T. 2 N. R. 38 E., B.M.



LEGEND & NOTES

- 5/8" Steel Re-bar found with plastic caps stamped L.S.827
 - 1/2" Steel Re-bar found with plastic caps stamped L.S.8795
 - 1/2" x 24" Steel Re-bar set with plastic cap stamped L.S.8795
 - Checked X in concrete
- Utility Easements are ten feet wide unless otherwise shown.

First American Tile Company
Idaho Falls, Idaho 83404

This sketch is made solely for the purpose of assisting in locating the premises. The company assumes no liability for alleged loss or damage which may result from reliance on this map.

