

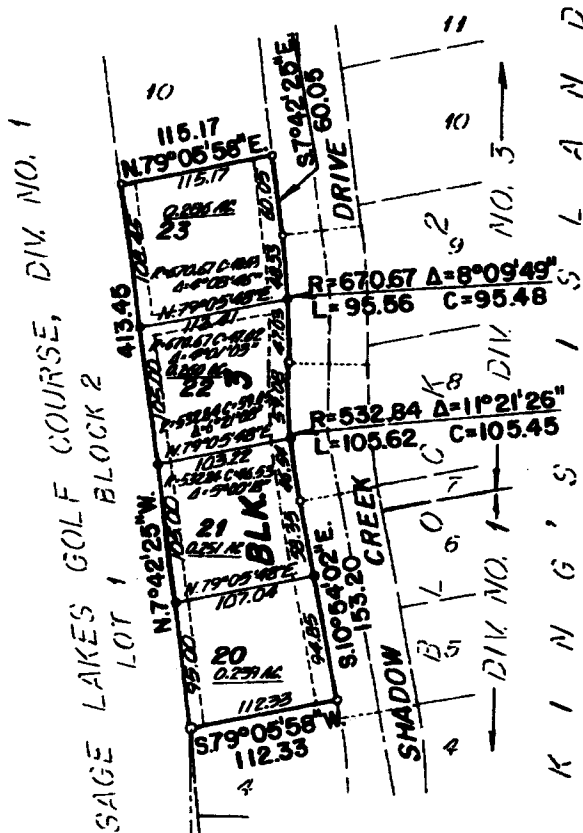
# FIRST AMENDED PLAT OF KING'S ISLAND DIVISIONS 1 AND 3

## AN ADDITION TO THE CITY OF IDAHO FALLS BONNEVILLE COUNTY, IDAHO

**BEING A REPLAT OF LOTS 5 AND 6, BLOCK 3 OF DIVISION NO. 1  
AND LOTS 7, 8 AND 9, BLOCK 3 OF DIVISION NO. 3  
IN THE S.W. 1/4 OF THE S.W. 1/4 OF SECTION 31, T. 3 N., R. 38 E., B.M.**

First American Title Company  
Idaho Falls, Idaho 83404

While this is a photographic reproduction of the recorded plat, the Company assumes no liability for variations, if any, with a re-survey.



### LEGEND & NOTES

- 1/2" x 24" Steel rebar set with plastic cap stamped L.S.8795
- 5/8" Steel rebar found with caps stamped L.S.8795
- 1/2" Steel rebar found with caps stamped L.S.8795

A fifteen foot wide Public Utility Easement is hereby granted along all road frontages within each lot. All other public utility easements are 8' foot wide unless noted otherwise.

FOUND BRASS CAP  
S.W. CORNER SEC. 31  
T. 3 N. R. 38 E. B. M.  
C.P. & F. BY L.S. 827  
INSTR. NO. 567818

FOUND ALUMINUM CAP  
S. 1/4 CORNER SEC. 31  
T. 3 N. R. 38 E. B. M.  
C.P. & F. BY L.S. 827  
INSTR. NO. 670717

