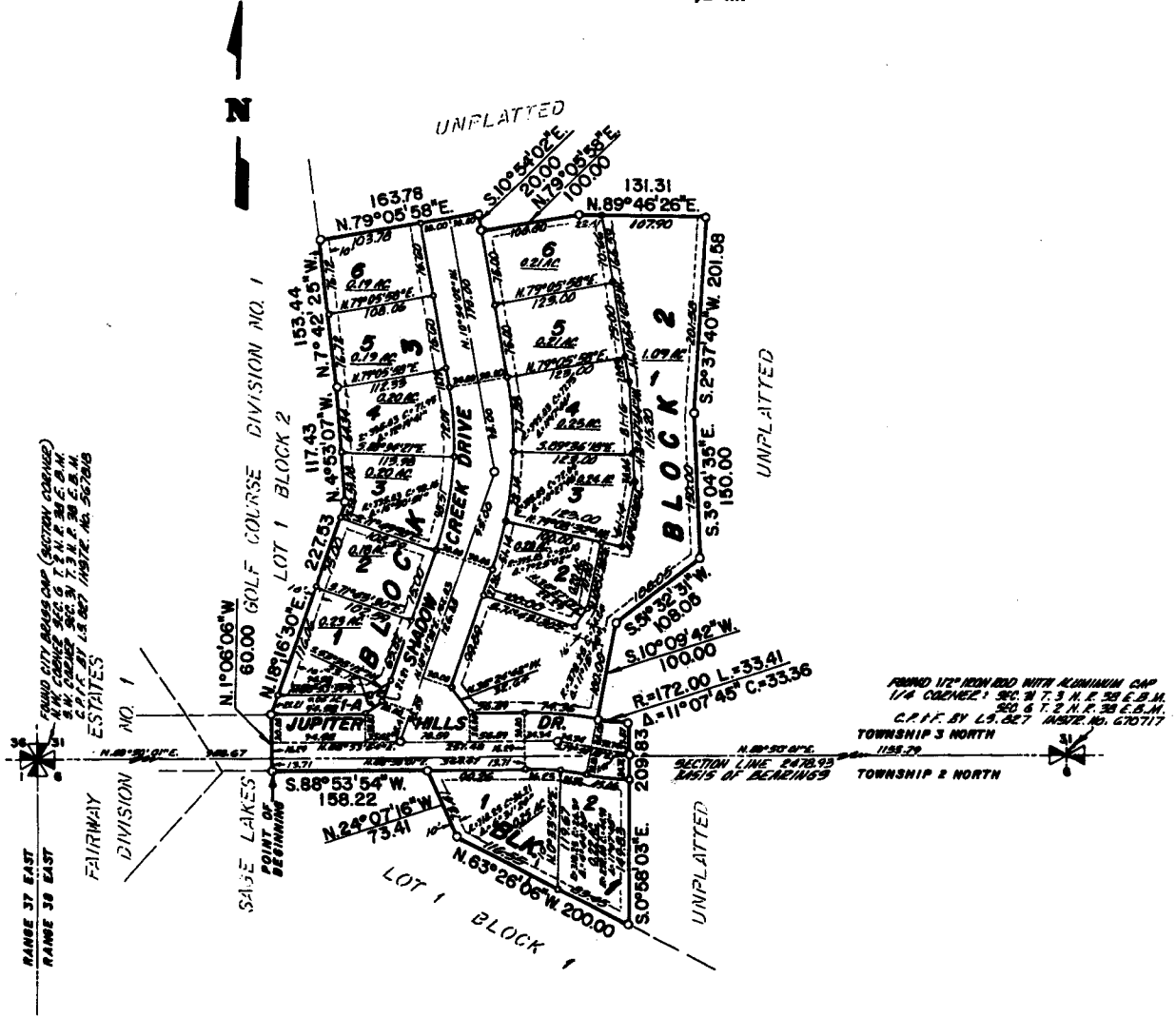


KING'S ISLAND DIVISION NO. 1

**AN ADDITION TO THE CITY OF IDAHO FALLS, BONNEVILLE COUNTY, IDAHO
BEING A REPLAT OF FAIRWAY ESTATES, DIVISION NO. 6
IN THE N.W. 1/4 OF SECTION 6, T. 2 N. R. 38 E., B.M. AND
THE S.W. 1/4 OF SECTION 31, T. 3 N. R. 38 E., B.M.**



LEGEND & NOTES

- 5/8" Steel file-bar found with plastic cap stamped L.S. 8753
- 1/2" Steel file-bar found with plastic cap stamped L.S. 8755
- 3/8" Steel file-bar found with caps stamped L.S. 8752
- SET
1/2" Steel file-bar found with caps stamped L.S. 8857 8795

A Ten foot wide Utility Easement is hereby granted along all road frontages within each lot.
All other easements are eight foot wide unless otherwise noted.

Lot 1, Block 2 and Lot 1-A, Block 3 are open space lots.

First American Title Company
Idaho Falls, Idaho 83404

While this is a photographic reproduction of the recorded plat, the Company assumes no liability for variations, if any, with a re-survey.

FOUND 1/2" IRON ROD WITH ALUMINUM CAP
1/4 CORNER 1 SEC. 31 T. 3 N. R. 38 E. B.M.
SEC. 6 T. 2 N. R. 38 E. B.M.
C.P.F. BY L.S. 827 INSTR. NO. 470717
TOWNSHIP 3 NORTH
1155.25
SECTION LINE 2478.95
MID. OF BEARINGS
TOWNSHIP 2 NORTH