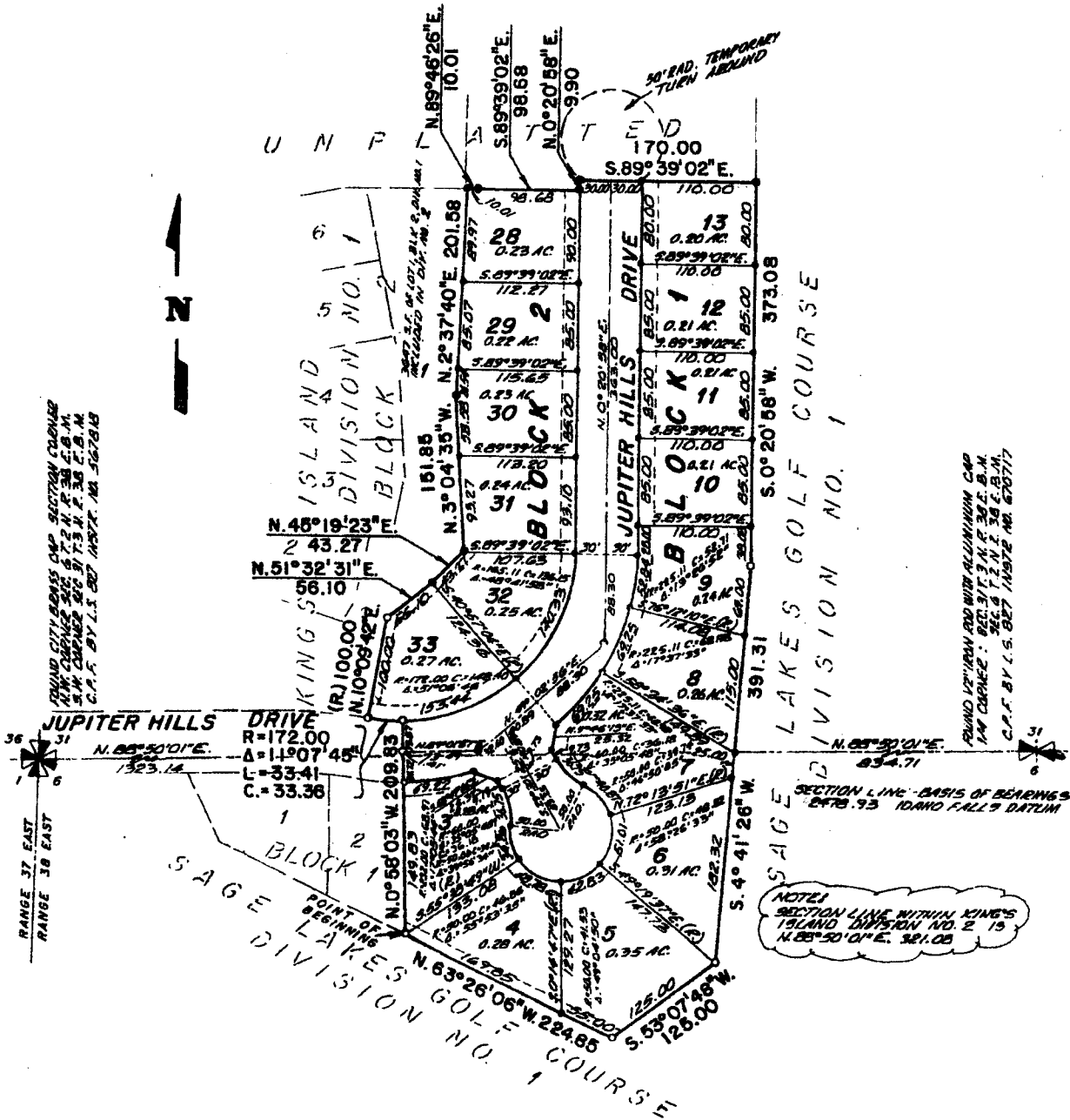


KING'S ISLAND DIVISION NO. 2

AN ADDITION TO THE CITY OF IDAHO FALLS, BONNEVILLE COUNTY, IDAHO
IN THE N.W. 1/4 OF SECTION 6, T.2 N. R. 38 E., B.M. AND
THE S.W. 1/4 OF SECTION 31, T.3 N. R. 38 E., B.M.
WHICH INCLUDES A REPLAT OF A PORTION OF LOT 1 BLOCK 2, KING'S ISLAND, DIVISION NO. 1



First American Title Company
 Idaho Falls, Idaho 83404

This sketch is made solely for the purpose of assisting in locating the premises. The company assumes no liability for alleged loss or damage which may result from reliance on this map.



LEGEND & NOTES

- 5/8" x 30" Steel Re-bar set with plastic cap stamped L.S.8795
- 1/2" x 24" Steel Re-bar set with plastic cap stamped L.S.8795
- 5/8" Steel Re-bar found with caps stamped L.S.8795
- 1/2" Steel Re-bar found with caps stamped L.S.8795 unless shown otherwise

--- A twenty foot wide Utility Easement is hereby granted along all road frontages within each lot. All other easements are eight feet wide unless otherwise noted.