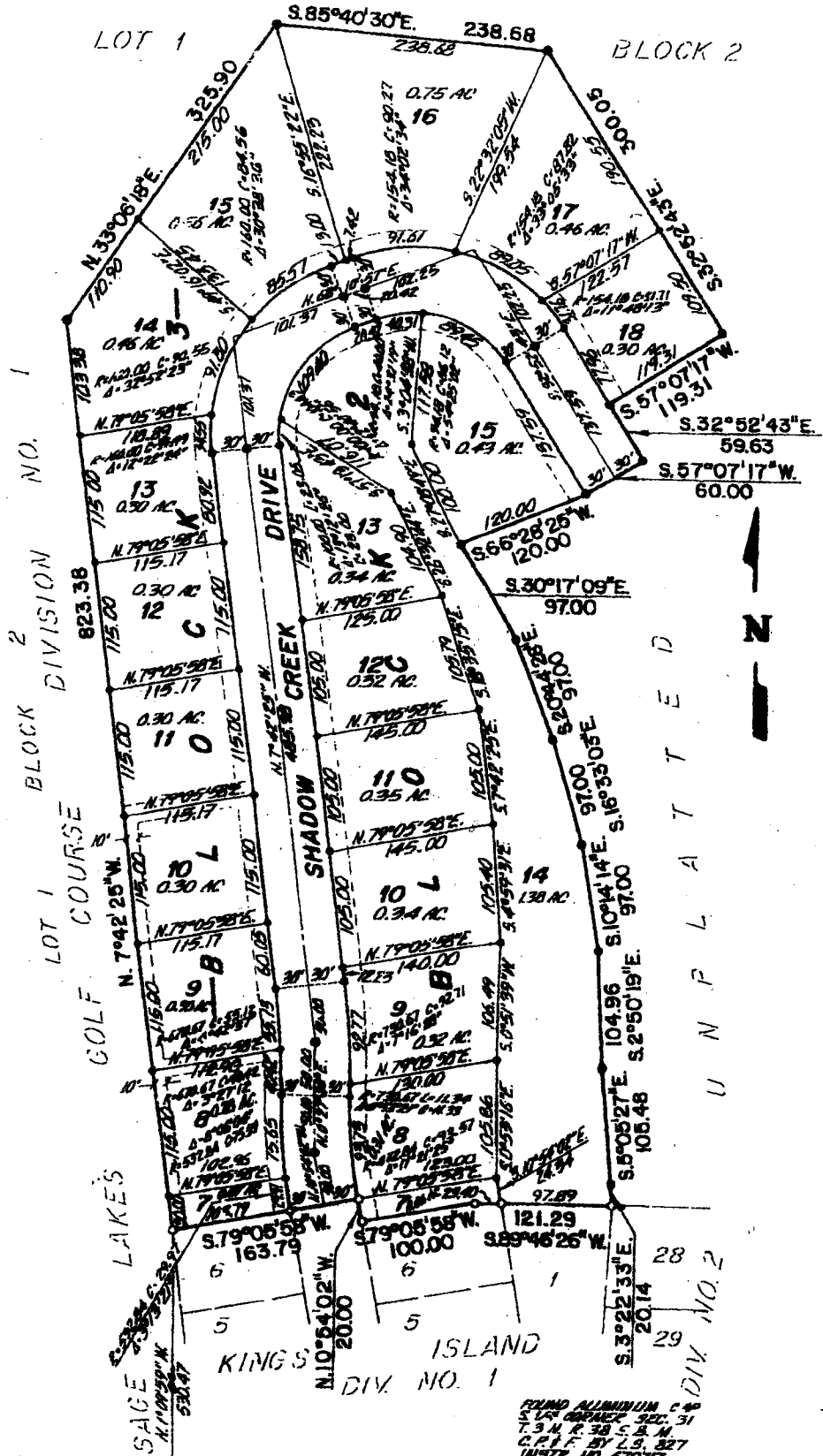


KING'S ISLAND DIVISION NO. 3

AN ADDITION TO THE CITY OF IDAHO FALLS,
BONNEVILLE COUNTY, IDAHO
IN THE W. 1/2 OF SECTION 31, T.3 N. R. 38 E., B.M.

SAGE LAKES GOLF COURSE, DIV. NO. 1



FOUND CORNERS ON
S. 1/4 CORNER SEC. 31
T. 3 N. R. 38 E. B.M.
C.P.F. BY L.S. 827
INSTR. NO. 56708

FOUND ALUMINUM C. 60
S. 1/4 CORNER SEC. 31
T. 3 N. R. 38 E. B.M.
C.P.F. BY L.S. 827
INSTR. NO. 67017

SECTION LINE N. 05° 50' 00" E. 2479.03 IDAHO FALLS DISTRICT
BASIS OF BEARINGS

