

KING'S ISLAND

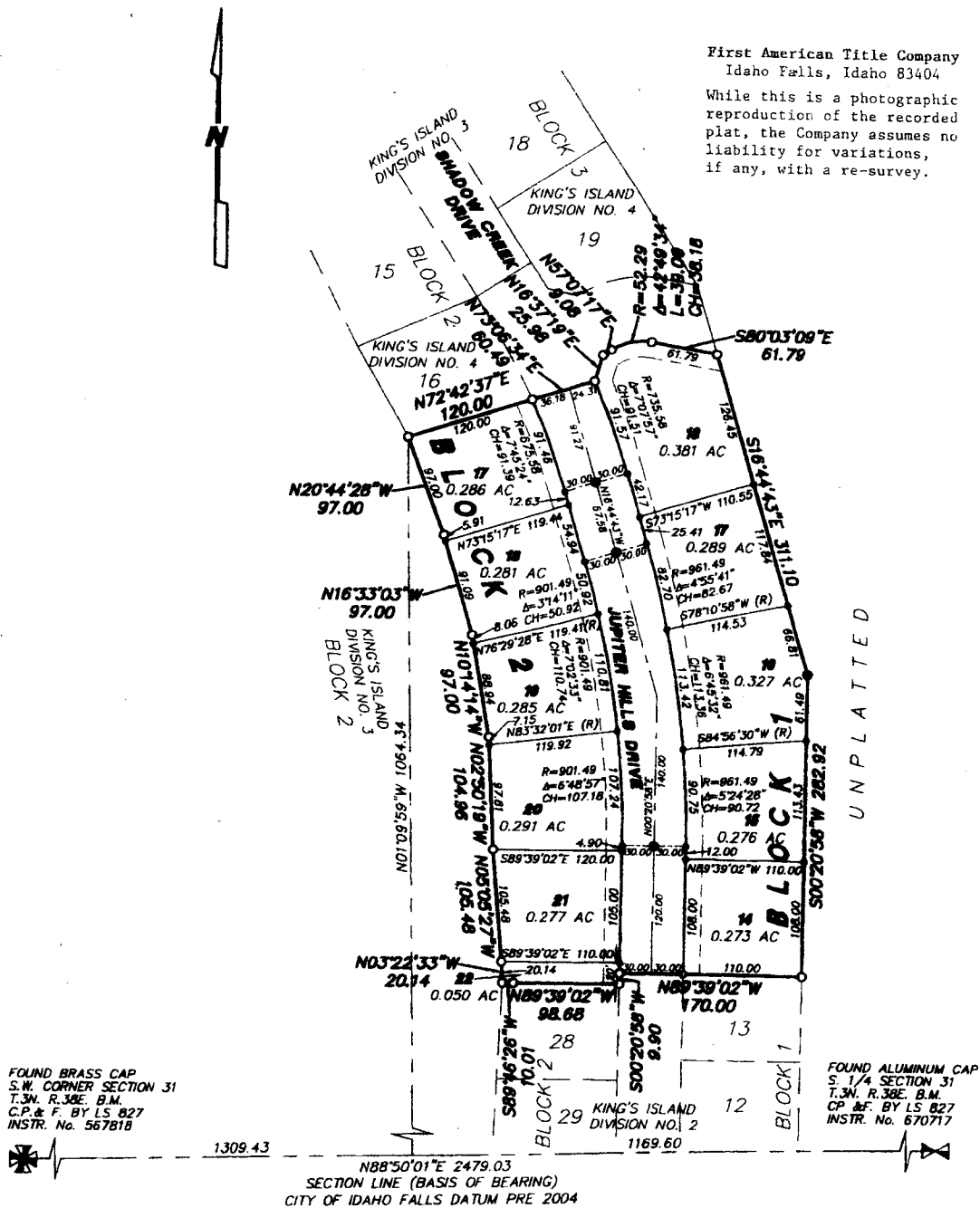
DIVISION NO. 5

AN ADDITION TO THE CITY OF IDAHO FALLS, BONNEVILLE COUNTY, IDAHO

BEING PART OF S.W. 1/4 OF SECTION 31, T.3N, R.30E B.M.

First American Title Company
Idaho Falls, Idaho 83404

While this is a photographic reproduction of the recorded plat, the Company assumes no liability for variations, if any, with a re-survey.



FOUND BRASS CAP
S.W. CORNER SECTION 31
T.3N, R.30E, B.M.
C.P. & F. BY LS 827
INSTR. No. 567818

FOUND ALUMINUM CAP
S. 1/4 SECTION 31
T.3N, R.30E, B.M.
C.P. & F. BY LS 827
INSTR. No. 670717

N88°50'01"E 2479.03
SECTION LINE (BASIS OF BEARING)
CITY OF IDAHO FALLS DATUM PRE 2004

LEGEND & NOTES

- 5/8" x 30" Steel Re-bar set with plastic cap stamped L.S.8795
 - 1/2" x 24" Steel Re-bar set with plastic cap stamped L.S.8795
 - 5/8" Steel Re-bar found with caps stamped L.S.8795
 - 1/2" Steel Re-bar found with caps stamped L.S.8795 unless shown otherwise
- A fifteen foot wide Public Utility Easement is hereby granted along all road frontages within each lot. All other public utility easements are eight feet wide unless otherwise noted.
- Lot 22, Block 2 is an OPEN space lot.

UNPLATTED