

KINGSTON-BAUCHMAN INDUSTRIAL PARK

DIVISION NO. 1

BONNEVILLE COUNTY, IDAHO

PART OF THE W. 1/2 N.E. 1/4 SECTION 7, T. 2 N., R. 38 E., B. M.

LEGEND & NOTES

- 1/2" x 24" Steel Re-bar set with plastic cap stamped L.S.827
- 1/2" Steel Re-bar found with caps stamped L.S.827
- ▲ Highway Right-of-Way Monument

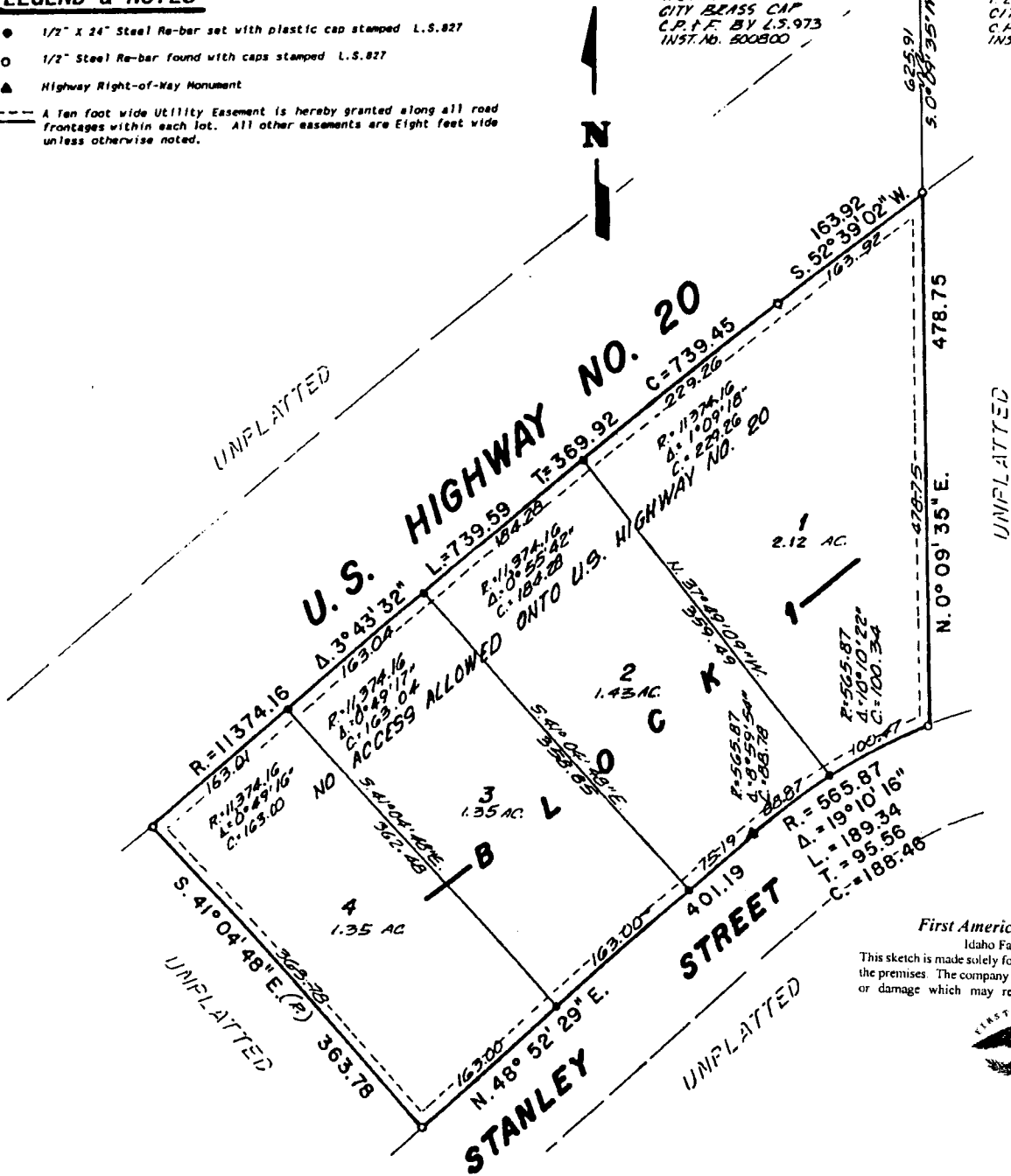
----- A Ten foot wide Utility Easement is hereby granted along all road frontages within each lot. All other easements are Eight feet wide unless otherwise noted.

CITY OF IDAHO FALLS DATUM
SECTION LINE - BASIS OF BEARINGS

N. 89°41'41"E. 2633.17
1316.58 1316.59

N. 1/4 CORNER SEC. 7
T. 2 N. R. 38 E. B.M.
CITY BRASS CAP
C.P.F. BY L.S. 973
INST. No. 500800

N.E. CORNER SEC. 7
T. 2 N. R. 38 E. B.M.
CITY BRASS CAP
C.P.F. BY L.S. 1480
INST. No. 774423



First American Title Company

Idaho Falls, Idaho 83404

This sketch is made solely for the purpose of assisting in locating the premises. The company assumes no liability for alleged loss or damage which may result from reliance on this map.

