

# KINGWOOD ADDITION DIVISION NO. 2

AN ADDITION TO THE CITY OF IDAHO FALLS  
BEING A PORTION OF THE NE 1/4 OF SECTION 33, T.2N., R.38E., B.M.,  
IDAHO FALLS, BONNEVILLE COUNTY, IDAHO

First American Title Company  
Idaho Falls, Id 83404  
While this is a photographic  
reproduction of the recorded  
plat, the company assumes  
no liability for variations,  
if any, with a re-survey.

GRAPHIC SCALE



| LINE | LENGTH | BEARING      |
|------|--------|--------------|
| L1   | 28.28  | S45°07'47" W |
| L2   | 77.00  | S89°07'47" W |
| L3   | 28.28  | S45°07'47" W |
| L4   | 28.28  | S45°07'47" W |
| L5   | 28.28  | S45°07'47" W |
| L6   | 28.28  | S45°07'47" W |
| L7   | 28.28  | S45°07'47" W |
| L8   | 28.28  | S45°07'47" W |
| L9   | 28.28  | S45°07'47" W |
| L10  | N/A    | N/A          |
| L11  | 28.28  | S45°07'47" W |
| L12  | 28.28  | S45°07'47" W |
| L13  | 28.28  | S45°07'47" W |
| L14  | 28.28  | S45°07'47" W |
| L15  | 28.28  | S45°07'47" W |
| L16  | 28.28  | S45°07'47" W |
| L17  | 28.28  | S45°07'47" W |
| L18  | 28.28  | S45°07'47" W |
| L19  | 28.28  | S45°07'47" W |
| L20  | 28.28  | S45°07'47" W |
| L21  | 28.28  | S45°07'47" W |
| L22  | 28.28  | S45°07'47" W |
| L23  | 28.28  | S45°07'47" W |
| L24  | 28.28  | S45°07'47" W |
| L25  | 28.28  | S45°07'47" W |
| L26  | 28.28  | S45°07'47" W |
| L27  | 28.28  | S45°07'47" W |
| L28  | 28.28  | S45°07'47" W |
| L29  | 28.28  | S45°07'47" W |
| L30  | 28.28  | S45°07'47" W |
| L31  | 28.28  | S45°07'47" W |
| L32  | 28.28  | S45°07'47" W |
| L33  | 28.28  | S45°07'47" W |
| L34  | 28.28  | S45°07'47" W |
| L35  | 28.28  | S45°07'47" W |
| L36  | 28.28  | S45°07'47" W |
| L37  | 28.28  | S45°07'47" W |
| L38  | 28.28  | S45°07'47" W |
| L39  | 28.28  | S45°07'47" W |
| L40  | 28.28  | S45°07'47" W |
| L41  | 28.28  | S45°07'47" W |
| L42  | 28.28  | S45°07'47" W |
| L43  | 28.28  | S45°07'47" W |
| L44  | 28.28  | S45°07'47" W |
| L45  | 28.28  | S45°07'47" W |
| L46  | 28.28  | S45°07'47" W |
| L47  | 28.28  | S45°07'47" W |
| L48  | 28.28  | S45°07'47" W |
| L49  | 28.28  | S45°07'47" W |
| L50  | 28.28  | S45°07'47" W |

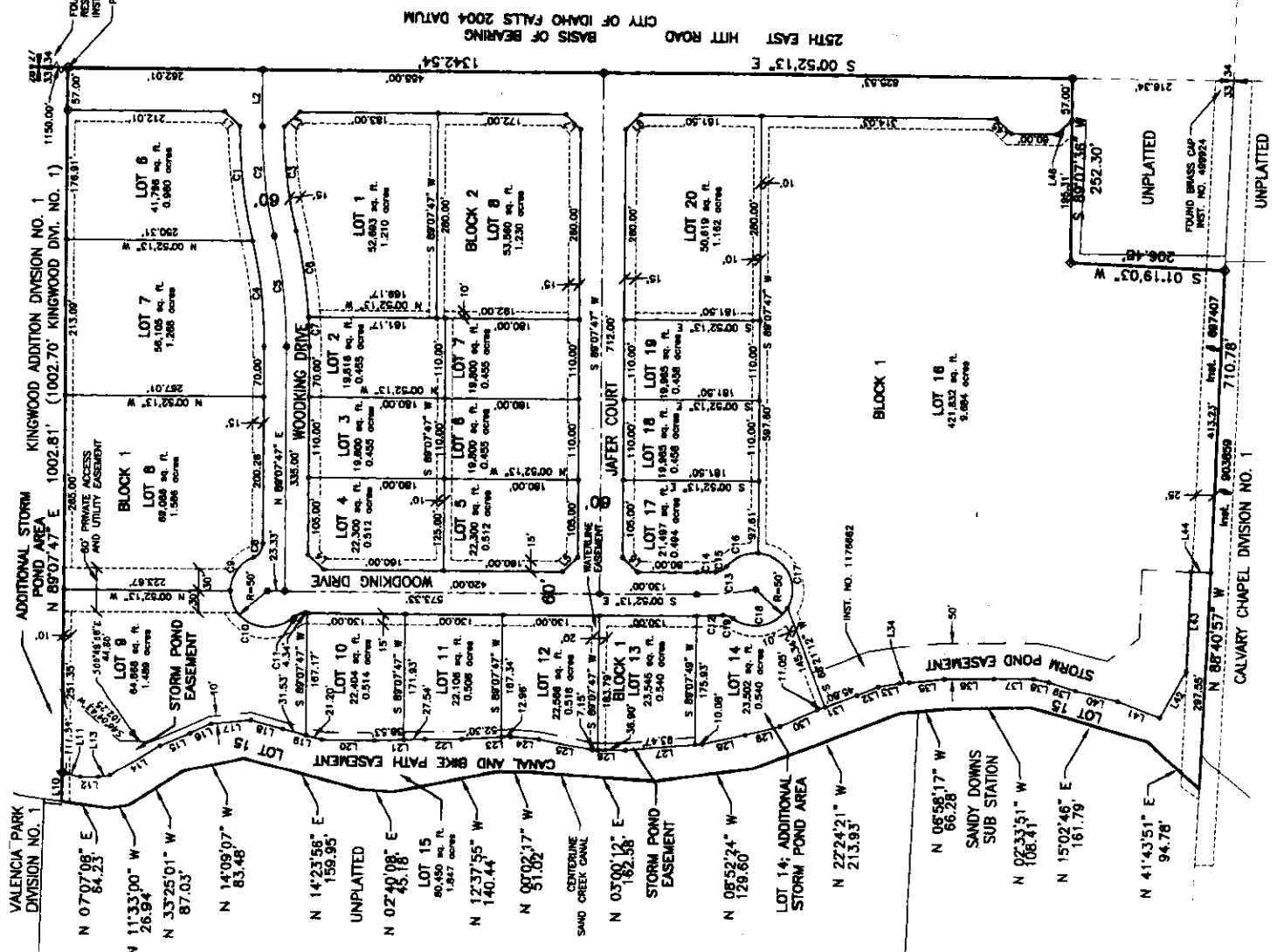
| Curve | Radius | Delta     | Length | Chord         | Chord Bearing | Chord Distance |
|-------|--------|-----------|--------|---------------|---------------|----------------|
| C1    | 881.82 | 17°18'32" | 158.33 | S 87°28'11" W | 157.87        |                |
| C2    | 881.82 | 17°18'32" | 151.38 | S 87°28'11" W | 151.02        |                |
| C3    | 881.82 | 17°18'32" | 144.38 | N 82°28'31" E | 144.00        |                |
| C4    | 881.82 | 17°18'32" | 144.38 | N 82°28'31" E | 144.00        |                |
| C5    | 881.82 | 17°18'32" | 137.38 | N 82°28'31" E | 137.00        |                |
| C6    | 881.82 | 17°18'32" | 130.38 | N 82°28'31" E | 130.00        |                |
| C7    | 881.82 | 17°18'32" | 123.38 | N 82°28'31" E | 123.00        |                |
| C8    | 881.82 | 17°18'32" | 116.38 | N 82°28'31" E | 116.00        |                |
| C9    | 881.82 | 17°18'32" | 109.38 | N 82°28'31" E | 109.00        |                |
| C10   | 881.82 | 17°18'32" | 102.38 | N 82°28'31" E | 102.00        |                |
| C11   | 881.82 | 17°18'32" | 95.38  | N 82°28'31" E | 95.00         |                |
| C12   | 881.82 | 17°18'32" | 88.38  | N 82°28'31" E | 88.00         |                |
| C13   | 881.82 | 17°18'32" | 81.38  | N 82°28'31" E | 81.00         |                |
| C14   | 881.82 | 17°18'32" | 74.38  | N 82°28'31" E | 74.00         |                |
| C15   | 881.82 | 17°18'32" | 67.38  | N 82°28'31" E | 67.00         |                |
| C16   | 881.82 | 17°18'32" | 60.38  | N 82°28'31" E | 60.00         |                |
| C17   | 881.82 | 17°18'32" | 53.38  | N 82°28'31" E | 53.00         |                |
| C18   | 881.82 | 17°18'32" | 46.38  | N 82°28'31" E | 46.00         |                |
| C19   | 881.82 | 17°18'32" | 39.38  | N 82°28'31" E | 39.00         |                |

### NOTES

- UNLESS OTHERWISE SHOWN, A 5/8" DIA. PLASTIC CAP SHALL BE USED TO PROTECT ALL HOLES AND PENETRATIONS AND AN EMBLEM FOR PUBLIC UTILITIES OVER THE TOP (S) SHALL BE INSTALLED TO INDICATE THE LOCATION OF SUCH HOLES AND PENETRATIONS. THE CONSTRUCTION OF HOLES-SHALL BE ACCORDING TO THE CITY OF IDAHO FALLS STANDARD SPECIFICATIONS AND SHALL BE APPROVED BY THE CITY ENGINEER.
- THE CITY OF IDAHO FALLS WILL NOT BE RESPONSIBLE FOR THE CONSTRUCTION OF HOLES-SHALL BE ACCORDING TO THE CITY OF IDAHO FALLS STANDARD SPECIFICATIONS AND SHALL BE APPROVED BY THE CITY ENGINEER.

### LEGEND

- Boundary Line
- Right-of-Way Line
- Centerline
- Lot Line
- Section Line
- Easement Line
- Storm Pond Easement Line
- Set 5/8" x 30" iron rod with plastic cap stamped L.S. 10788
- Set 1/2" x 24" iron rod with plastic cap stamped L.S. 10788
- Found 1/2" iron rod with plastic cap stamped L.S. 8798
- Found 5/8" iron rod with plastic cap stamped L.S. 8798



25TH EAST HITT ROAD  
CITY OF IDAHO FALLS 2004 DATUM  
BASIS OF BEARING  
134°25'

UNPLANTED  
FOUND BRASS CAP  
INST. NO. 48924

UNPLANTED  
INST. # 803859  
INST. # 887407  
710.78