

KINGWOOD ADDITION DIVISION NO. 1 TO THE CITY OF IDAHO FALLS, BONNEVILLE COUNTY, IDAHO LYING IN THE N.E. 1/4 N.E. 1/4 SECTION 33 T.2 N. R. 38 E. B.M.

FOUND BRASS CAP
N. 1/4 CORNER SEC. 33
T. 2 N. R. 38 E. B. M.
C.P.M. BY 15 973
INSTR. NO. 900255

UNPLATTED
LOT 1 BLK 1
ROSE NIELSEN ADDN
DIV. NO. 109

CITY OF IDAHO FALLS DATUM (2004 CITY GRID)
SECTION LINE - 349.15 OF BEARING 29

N. 89° 23' 54" W. 2606.11
2222.11

SUNNYSIDE ROAD

25 TH EAST

FOUND BRASS CAP
N. 1/4 CORNER SEC. 33
T. 2 N. R. 38 E. B. M.
C.P.M. BY 15 973
INSTR. NO. 900255

FIFTH AMENDED PLAT OF
RICKS PLAT
DIV. NO. 1
LOT 2 BLK. 4

LEGEND & NOTES

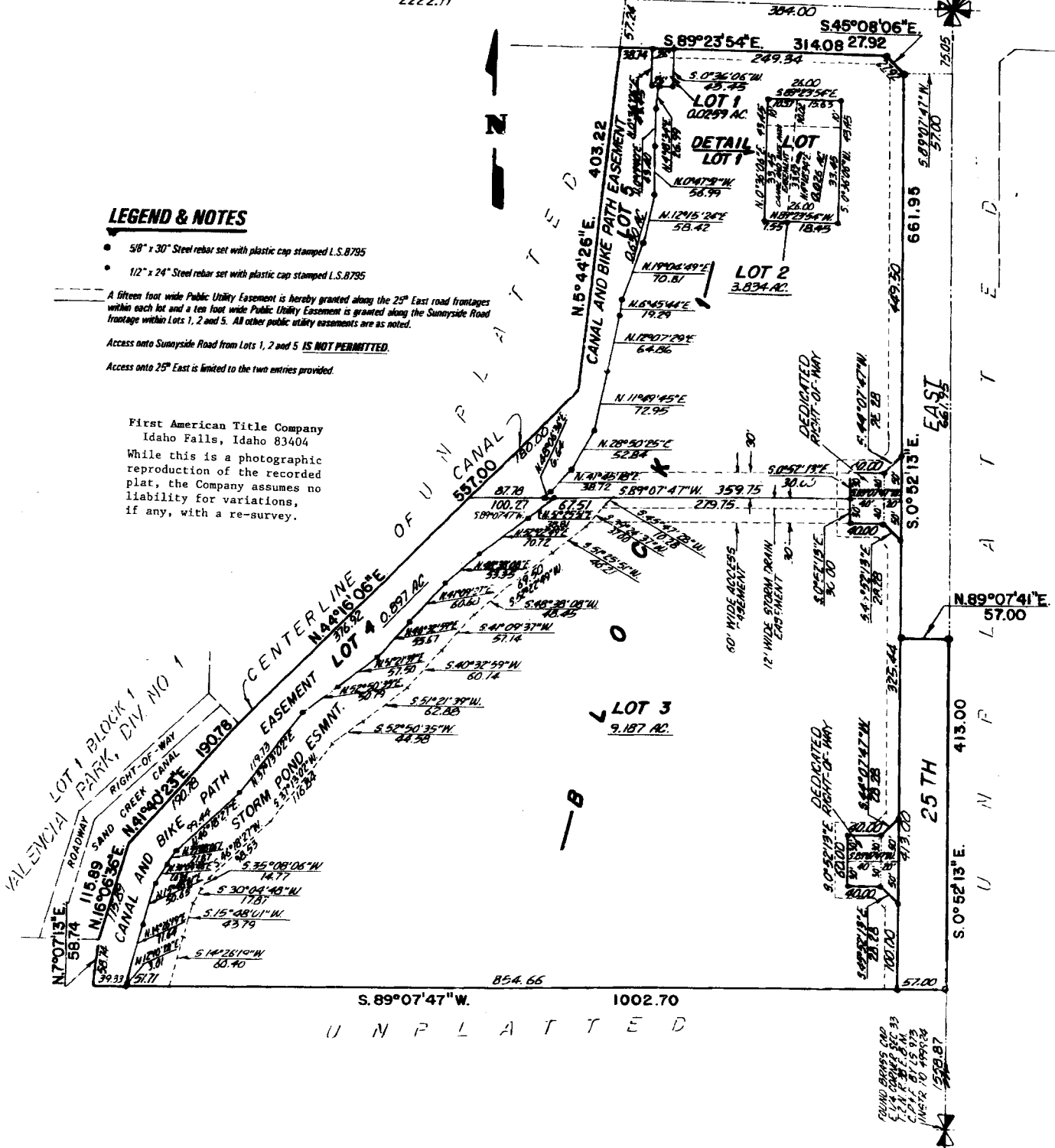
- 5/8" x 30" Steel rebar set with plastic cap stamped L.S.B.795
- 1/2" x 24" Steel rebar set with plastic cap stamped L.S.B.795

A fifteen foot wide Public Utility Easement is hereby granted along the 25th East road frontages within each lot and a ten foot wide Public Utility Easement is granted along the Sunnyside Road frontage within Lots 1, 2 and 5. All other public utility easements are as noted.

Access onto Sunnyside Road from Lots 1, 2 and 5 IS NOT PERMITTED.

Access onto 25th East is limited to the two entries provided.

First American Title Company
Idaho Falls, Idaho 83404
While this is a photographic
reproduction of the recorded
plat, the Company assumes no
liability for variations,
if any, with a re-survey.



S. 89° 07' 47" W. 1002.70

UNPLATTED

FOUND BRASS CAP
S. 1/4 CORNER SEC. 33
T. 2 N. R. 38 E. B. M.
C.P.M. BY 15 973
INSTR. NO. 900255