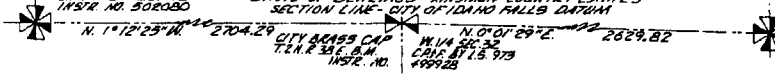


CITY BRASS CAP  
S.W. CORNER SEC. 32  
T. 2 N. R. 30 E. S. 34  
C.P.F. BY L.B. 973  
INSTR. NO. 502080

BASIS OF BEARINGS  
SECTION LINE - CITY OF IDAHO FALLS DATUM

2" ALUMINUM CAP  
N.W. CORNER SEC. 32  
T. 2 N. R. 30 E. S. 34  
C.P.F. BY L.B. 973  
INSTR. NO. 1004238



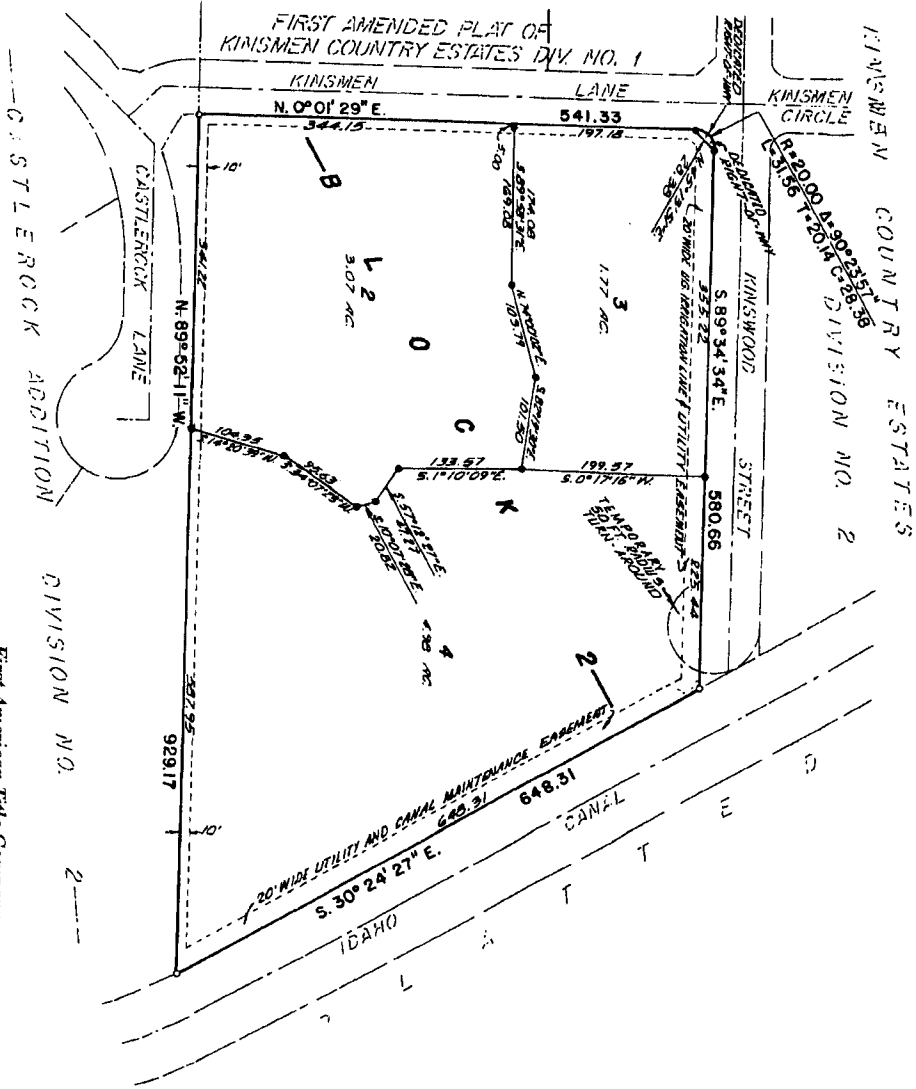
# 2ND AMENDED PLAT OF KINSMEN COUNTRY ESTATES Division No. 1

Bonneville County, Idaho  
Being A Replat of Lot 1, Block 2  
Kinsmen Country Estates, Division No. 1  
In the S.1/2 S.E. 1/4 N.W.1/4 Section 32 T. 3 N., R. 38 E.B.M.



**LEGEND & NOTES**

- 1/2" x 24" Steel rules are used for all measurements (S.B. 8735)
- 1/2" Steel rules from which caps stamped (S. 70) were used otherwise
- Utility Easements: widths are as shown.
- The division contains 3 lots. (2.28 acre average lot size)
- Bonneville County will not maintain roads and approved to County Standards and officially approved and accepted.
- Private easements shall be constructed to County Standards and drainage shall be maintained by the owner.



This sketch is made solely for the purpose of assisting in locating the premises. The company assumes no liability for alleged loss or damage which may result from reliance on this map.



First American Title Company  
Idaho Falls, Idaho 83404