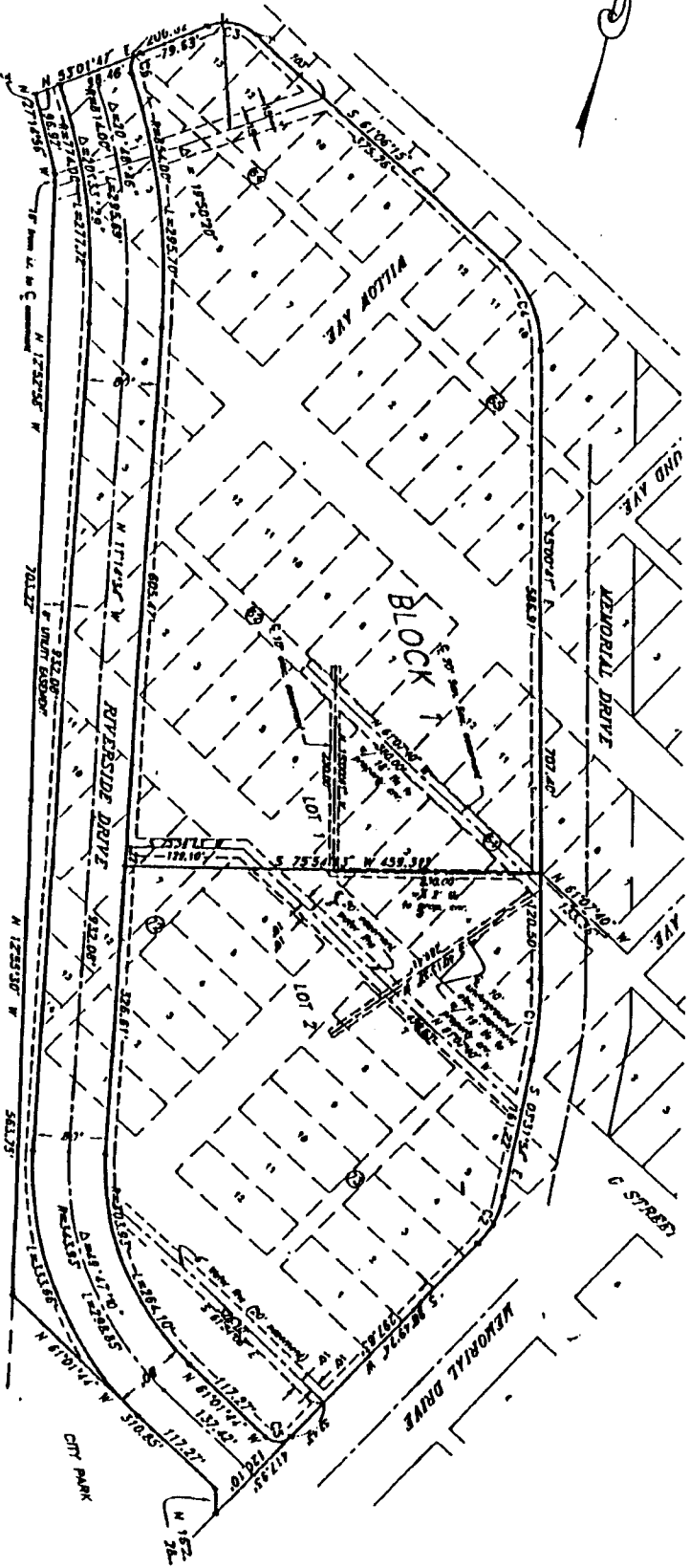


**L.D.S. TEMPLE ADDITION**  
**A REPLAT OF A PORTION OF THE ORIGINAL EAGLE ROCK TOWNSITE**  
**IN THE CITY OF IDAHO FALLS, BONNEVILLE COUNTY, IDAHO**  
**PART OF THE SW 1/4 OF SECTION 18 T.2N., R.38E., B.M.**



CURVE	RADIUS	LENGTH	TANGENT	CHORD	BEARING	DELTA
C1	453.92'	91.35'	45.63'	91.13'	S 09°16'18" E	17°28'47"
C2	109.25'	61.66'	31.78'	61.04'	S 12°38'46" W	12°21'18"
C3	49.00'	56.33'	31.74'	53.28'	N 25°57'46" E	65°51'58"
C4	139.48'	112.21'	59.34'	108.21'	S 38°03'28" E	46°05'34"
C5	20.00'	31.47'	20.05'	28.32'	N 73°53'42" W	9°08'52"
C6	19.92'	29.25'	17.97'	28.65'	N 10°38'27" E	84°08'41"

This sketch is made solely for the purpose of assisting in locating the premises. The company assumes no liability for alleged loss or damage which may result from reliance on this map.

First American Title Company

Idaho Falls, Idaho 83404



**LEGEND**

- Section control corners
- Placed 1/2" from road with cap marked P.L.S. 4563
- Utility easements are 10' wide along the frontage of all lots.