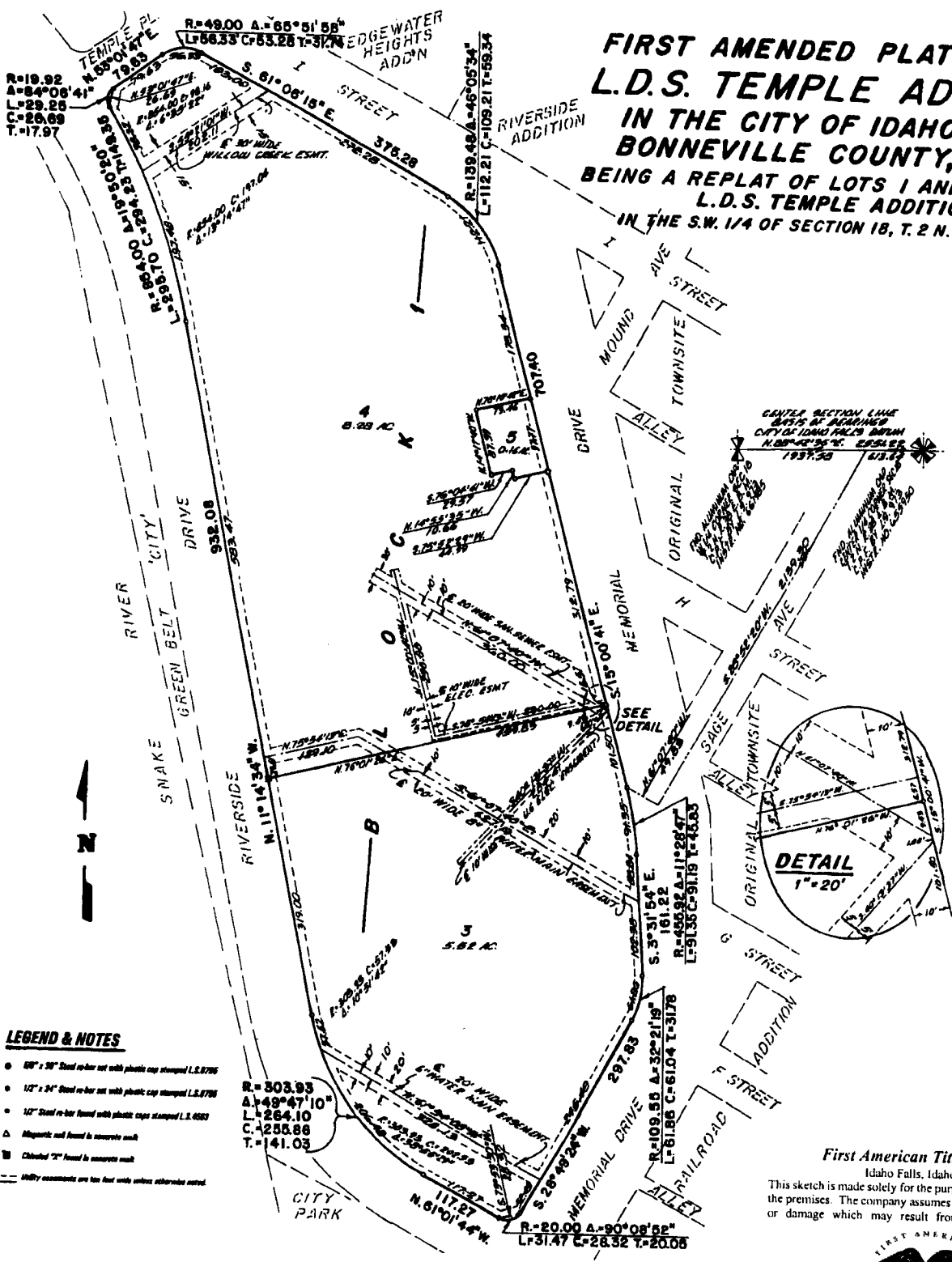


**FIRST AMENDED PLAT OF THE
L.D.S. TEMPLE ADDITION
IN THE CITY OF IDAHO FALLS,
BONNEVILLE COUNTY, IDAHO
BEING A REPLAT OF LOTS 1 AND 2, BLOCK 1,
L.D.S. TEMPLE ADDITION
IN THE S.W. 1/4 OF SECTION 18, T. 2 N. R. 38 E., B. M.**



- LEGEND & NOTES**
- 60" x 30" Steel re-bar set with plastic cap stamped L.S. 8776
 - 12" x 24" Steel re-bar set with plastic cap stamped L.S. 8776
 - 12" Steel re-bar found with plastic cap stamped L.S. 6883
 - ▲ Magnetic nail found in concrete curb
 - Checked "T" found in concrete curb
- Utility easements are less than wide unless otherwise noted

R=303.93
A=49°47'10"
L=264.10
C=235.86
T=141.03

R=20.00 A=90°08'52"
L=31.47 C=28.32 T=20.06

First American Title Company
Idaho Falls, Idaho 83404
This sketch is made solely for the purpose of assisting in locating the premises. The company assumes no liability for alleged loss or damage which may result from reliance on this map

