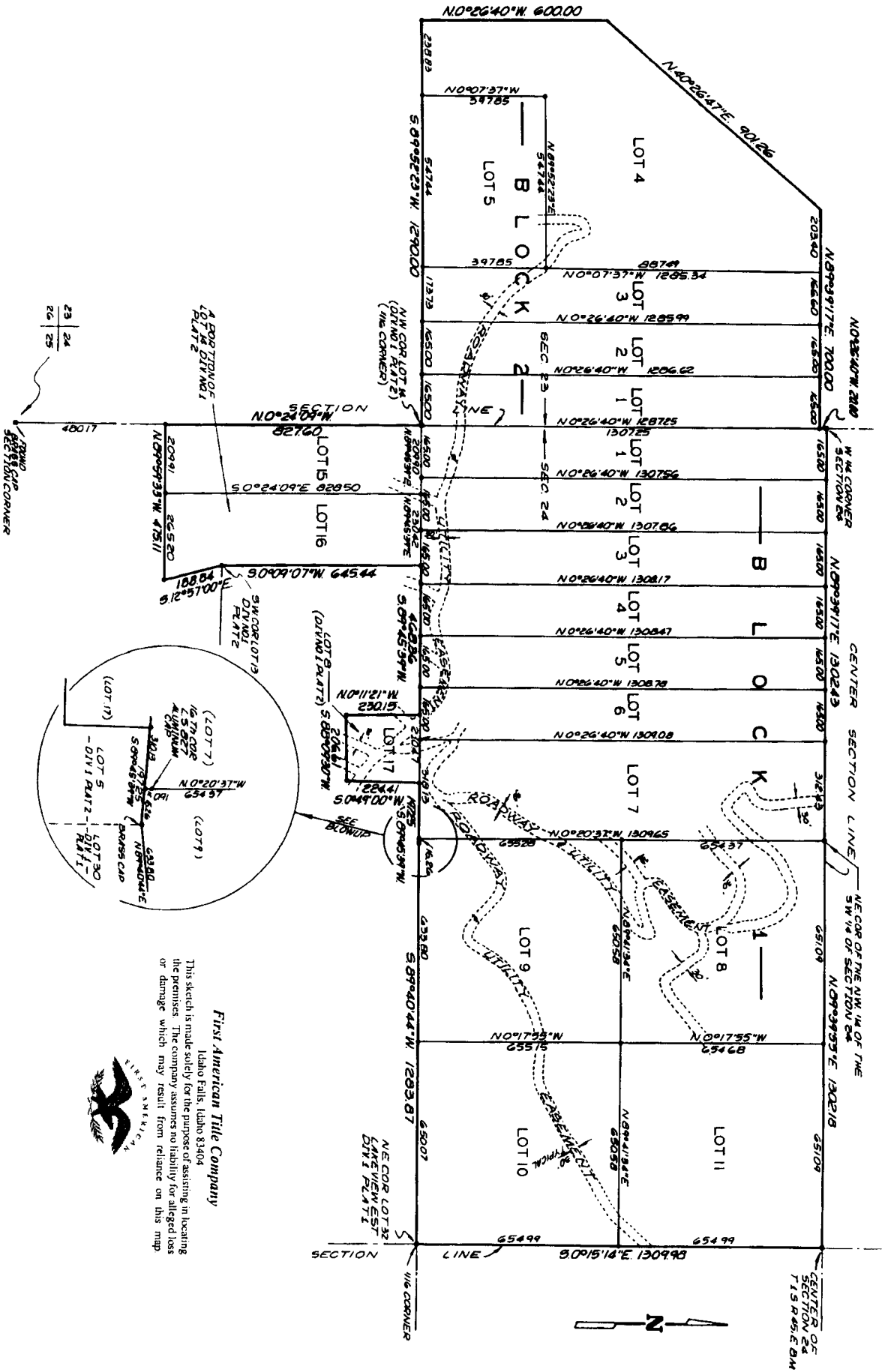


LAKEVIEW ESTATES DIVISION NO. 3
 PART OF THE S.E. 1/4 OF SEC. 23 & PART OF THE S.W. 1/4 OF SEC. 24 T. 15 R. 45 E. B.M.
 AND LOTS 8 & 14 IN LAKEVIEW ESTATES DIVISION NO. 1 PLAT 2 BONNEVILLE CO IDAHO



First American Title Company
 Idaho Falls, Idaho 83404

This sketch is made solely for the purpose of assisting in locating the premises. The company assumes no liability for alleged loss or damage which may result from reliance on this map.



23
24
25
26