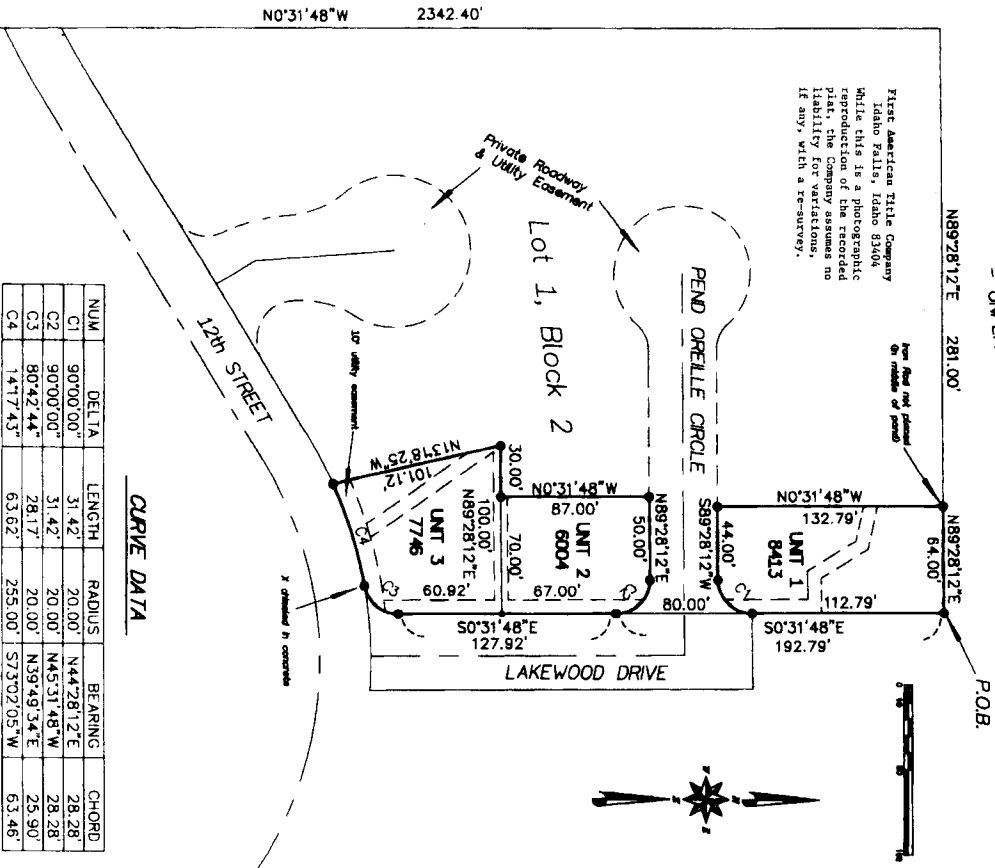


LAKEWOOD ASPENS SHIRE PURSUANT TO IDAHO CODE, TITLE 55, CHAPTER 15

LOCATED IN PART OF LOT 1, BLOCK 2,
LAKEWOOD ASPENS ADDITION DIVISION NO. 1, CITY OF IDAHO FALLS, IDAHO
PART OF THE SE. 1/4 OF SECTION 21, T.2N., R.38E.B.M.

- UNPLATTED -

First American Title Company
Idaho Falls, Idaho 83404
While this is a photographic
reproduction of the recorded
plat, the surveyor assumes no
liability for any errors,
if any, with a re-survey.



CURVE DATA

NO.	DELTA	LENGTH	RADIUS	BEARING	CHORD
C1	90°00'00"	31.42'	20.00'	N44°28'12"E	28.28'
C2	90°00'00"	31.42'	20.00'	N45°31'48"W	28.28'
C3	80°42'44.4"	28.17'	20.00'	N39°49'34.4"E	25.90'
C4	141°17'43"	63.62'	255.00'	S73°02'05"W	63.46'

NOTES

- 1. Indicated by 1/2" x 1/2" x 1/2" iron rod found 200
- 2. Indicated by 1/2" x 1/2" x 1/2" iron rod found 198
- 3. Indicated by 1/2" x 1/2" x 1/2" iron rod found 195
- 4. Indicated by 1/2" x 1/2" x 1/2" iron rod found 192
- 5. Indicated by 1/2" x 1/2" x 1/2" iron rod found 189
- 6. Indicated by 1/2" x 1/2" x 1/2" iron rod found 186
- 7. Indicated by 1/2" x 1/2" x 1/2" iron rod found 183
- 8. Indicated by 1/2" x 1/2" x 1/2" iron rod found 180
- 9. Indicated by 1/2" x 1/2" x 1/2" iron rod found 177
- 10. Indicated by 1/2" x 1/2" x 1/2" iron rod found 174
- 11. Indicated by 1/2" x 1/2" x 1/2" iron rod found 171
- 12. Indicated by 1/2" x 1/2" x 1/2" iron rod found 168
- 13. Indicated by 1/2" x 1/2" x 1/2" iron rod found 165
- 14. Indicated by 1/2" x 1/2" x 1/2" iron rod found 162
- 15. Indicated by 1/2" x 1/2" x 1/2" iron rod found 159
- 16. Indicated by 1/2" x 1/2" x 1/2" iron rod found 156
- 17. Indicated by 1/2" x 1/2" x 1/2" iron rod found 153
- 18. Indicated by 1/2" x 1/2" x 1/2" iron rod found 150
- 19. Indicated by 1/2" x 1/2" x 1/2" iron rod found 147
- 20. Indicated by 1/2" x 1/2" x 1/2" iron rod found 144
- 21. Indicated by 1/2" x 1/2" x 1/2" iron rod found 141
- 22. Indicated by 1/2" x 1/2" x 1/2" iron rod found 138
- 23. Indicated by 1/2" x 1/2" x 1/2" iron rod found 135
- 24. Indicated by 1/2" x 1/2" x 1/2" iron rod found 132
- 25. Indicated by 1/2" x 1/2" x 1/2" iron rod found 129
- 26. Indicated by 1/2" x 1/2" x 1/2" iron rod found 126
- 27. Indicated by 1/2" x 1/2" x 1/2" iron rod found 123
- 28. Indicated by 1/2" x 1/2" x 1/2" iron rod found 120
- 29. Indicated by 1/2" x 1/2" x 1/2" iron rod found 117
- 30. Indicated by 1/2" x 1/2" x 1/2" iron rod found 114
- 31. Indicated by 1/2" x 1/2" x 1/2" iron rod found 111
- 32. Indicated by 1/2" x 1/2" x 1/2" iron rod found 108
- 33. Indicated by 1/2" x 1/2" x 1/2" iron rod found 105
- 34. Indicated by 1/2" x 1/2" x 1/2" iron rod found 102
- 35. Indicated by 1/2" x 1/2" x 1/2" iron rod found 99
- 36. Indicated by 1/2" x 1/2" x 1/2" iron rod found 96
- 37. Indicated by 1/2" x 1/2" x 1/2" iron rod found 93
- 38. Indicated by 1/2" x 1/2" x 1/2" iron rod found 90
- 39. Indicated by 1/2" x 1/2" x 1/2" iron rod found 87
- 40. Indicated by 1/2" x 1/2" x 1/2" iron rod found 84
- 41. Indicated by 1/2" x 1/2" x 1/2" iron rod found 81
- 42. Indicated by 1/2" x 1/2" x 1/2" iron rod found 78
- 43. Indicated by 1/2" x 1/2" x 1/2" iron rod found 75
- 44. Indicated by 1/2" x 1/2" x 1/2" iron rod found 72
- 45. Indicated by 1/2" x 1/2" x 1/2" iron rod found 69
- 46. Indicated by 1/2" x 1/2" x 1/2" iron rod found 66
- 47. Indicated by 1/2" x 1/2" x 1/2" iron rod found 63
- 48. Indicated by 1/2" x 1/2" x 1/2" iron rod found 60
- 49. Indicated by 1/2" x 1/2" x 1/2" iron rod found 57
- 50. Indicated by 1/2" x 1/2" x 1/2" iron rod found 54
- 51. Indicated by 1/2" x 1/2" x 1/2" iron rod found 51
- 52. Indicated by 1/2" x 1/2" x 1/2" iron rod found 48
- 53. Indicated by 1/2" x 1/2" x 1/2" iron rod found 45
- 54. Indicated by 1/2" x 1/2" x 1/2" iron rod found 42
- 55. Indicated by 1/2" x 1/2" x 1/2" iron rod found 39
- 56. Indicated by 1/2" x 1/2" x 1/2" iron rod found 36
- 57. Indicated by 1/2" x 1/2" x 1/2" iron rod found 33
- 58. Indicated by 1/2" x 1/2" x 1/2" iron rod found 30
- 59. Indicated by 1/2" x 1/2" x 1/2" iron rod found 27
- 60. Indicated by 1/2" x 1/2" x 1/2" iron rod found 24
- 61. Indicated by 1/2" x 1/2" x 1/2" iron rod found 21
- 62. Indicated by 1/2" x 1/2" x 1/2" iron rod found 18
- 63. Indicated by 1/2" x 1/2" x 1/2" iron rod found 15
- 64. Indicated by 1/2" x 1/2" x 1/2" iron rod found 12
- 65. Indicated by 1/2" x 1/2" x 1/2" iron rod found 9
- 66. Indicated by 1/2" x 1/2" x 1/2" iron rod found 6
- 67. Indicated by 1/2" x 1/2" x 1/2" iron rod found 3
- 68. Indicated by 1/2" x 1/2" x 1/2" iron rod found 0

Witness Cor. 647.12' 1959.53' 1959.53' 1959.53'

Southwest Corner Sec. 2, T. 1, 2 N. R. 38 E. B.M.

Centerline of 17th Street

Witness Cor. 647.12' 1959.53' 1959.53' 1959.53'

Southwest Corner Sec. 2, T. 1, 2 N. R. 38 E. B.M.

Centerline of 17th Street