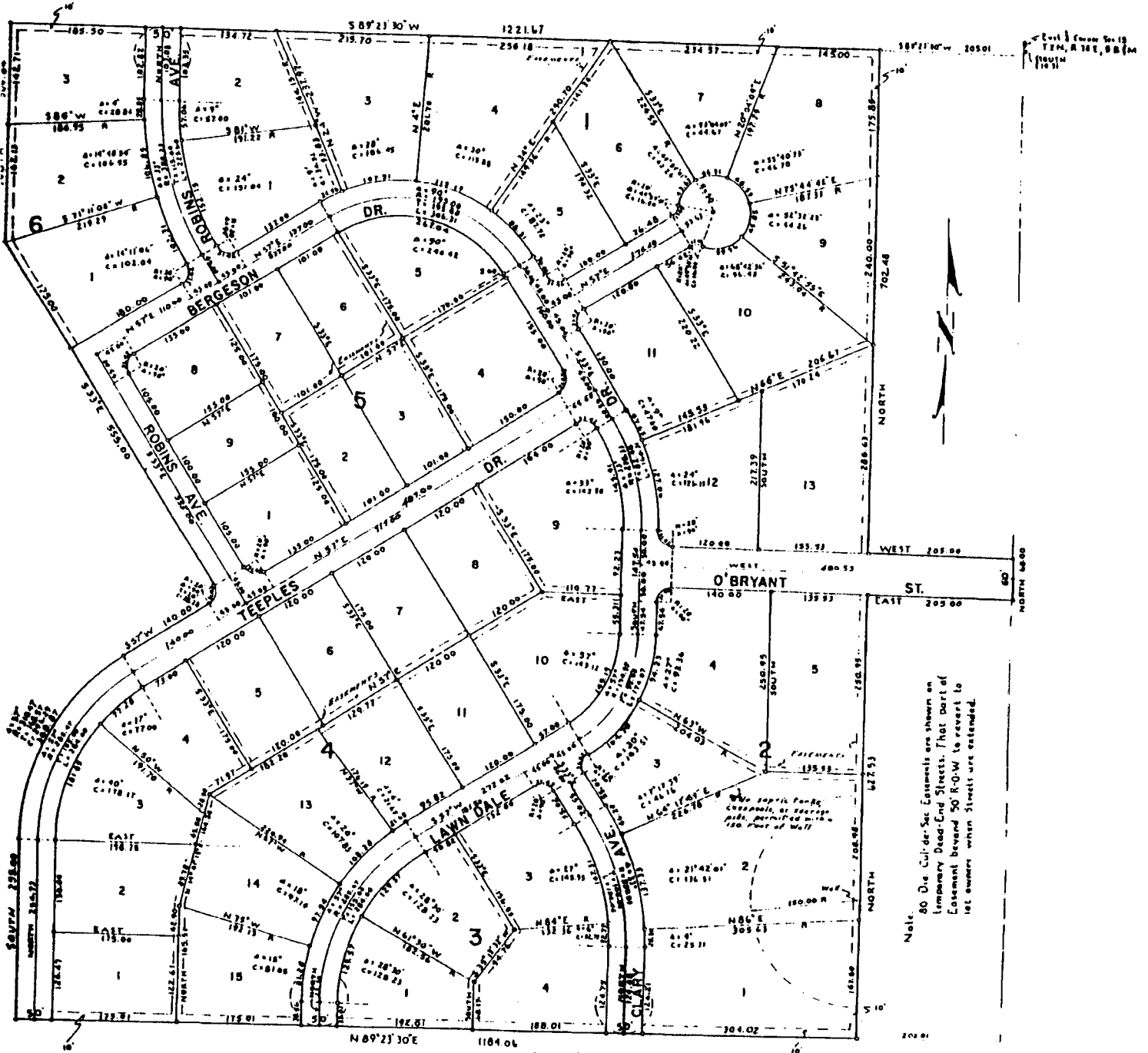


# LAWN DALE ESTATES

DIVISION NO. 1  
BONNEVILLE COUNTY, IDAHO

PART OF  
SE 1/4 SEC. 15, T.2N, R.38E. B.B.M.



Note:  
80' Dia. Cur'd. Sec. Easements are shown on  
Lapamary Dead-End Streets. That Part of  
Easement beyond 50' R.O.W. to revert to  
lot owners when Streets are extended.

Utility & Irrigation Easements are 8' through each lot unless shown otherwise

First American Title Company  
Idaho Falls, Idaho 83404

This sketch is made solely for the purpose of assisting in locating  
the premises. The company assumes no liability for alleged loss  
or damage which may result from reliance on this map

