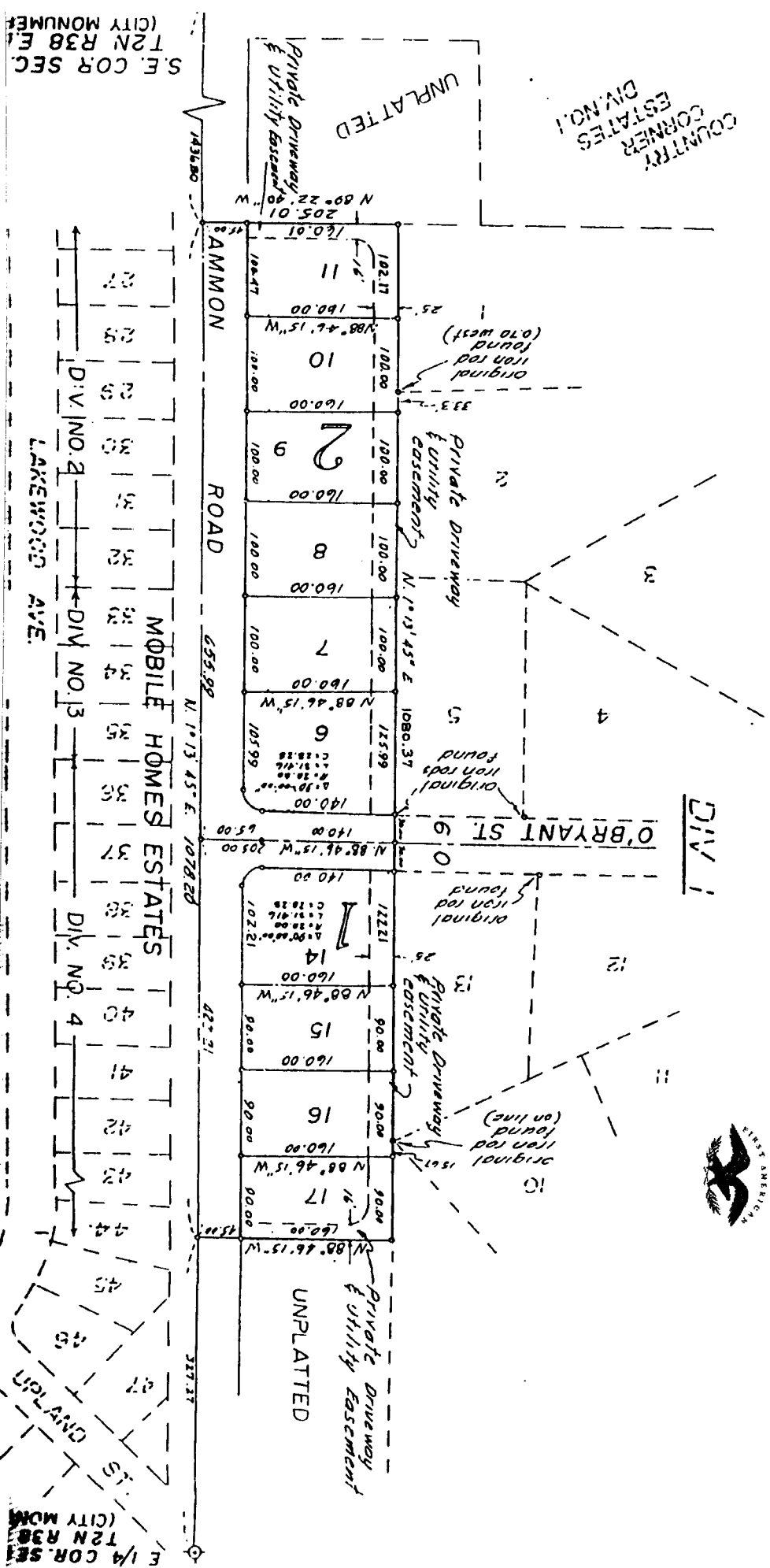


# LAWN DALE SUBDIVISION DIVISION NO. 3

PART OF THE S.E. 1/4 OF SEC. 15  
T2N R38 E.B.M.  
BONNEVILLE COUNTY, IDAHO

**First American Title Company**  
Idaho Falls, Idaho 83404  
This sketch is made solely for the purpose of assisting in locating the premises. The company assumes no liability for alleged loss or damage which may result from reliance on this map.



S.E. COR. SEC. 15  
T2N R38 E.  
(CITY MONUMENT)

E 1/4 COR. SEC. 15  
T2N R38 E.  
(CITY MONUMENT)