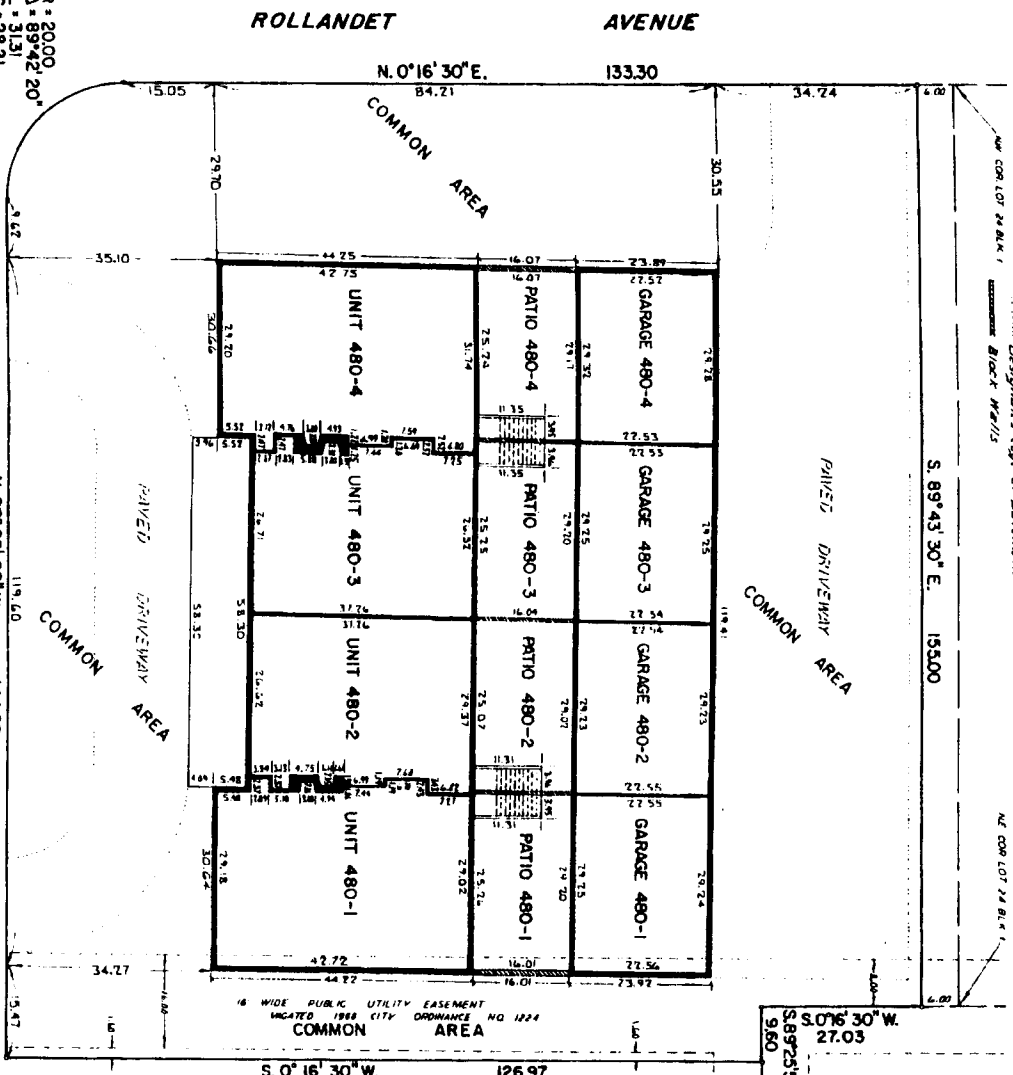


# LAYTON CONDOMINIUM

## A CONDOMINIUM PROJECT

CITY OF IDAHO FALLS, BONNEVILLE COUNTY, IDAHO

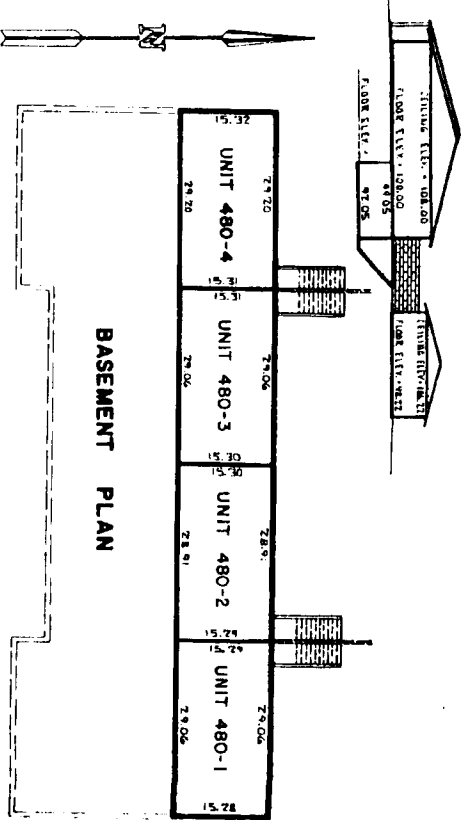
- NOTES**
- Designer's floor loads
  - Public Utility Easement
  - Designated edge of pavement
  - Block Walls



S. 0° 16' 30" W.  
126.97  
S. 89° 43' 30" E. 153.00  
S. 07° 16' 30" W.  
27.03  
S. 89° 25' 50" E.  
9.80



**First American Tile Company**  
 Idaho Falls, Idaho 83404  
 This sketch is made solely for the purpose of assisting in locating the premises. The company assumes no liability for alleged loss or damage which may result from reliance on this map.



R = 20.00  
 Δ = 89° 42' 20"  
 L = 31.31  
 C = 28.21  
 T = 15.90

ROLLANDET AVENUE

SUNNYSIDE ROAD